

Enabling Business Continuity

When you have to Work Remotely

ProdX has been designed to enable full remote monitoring and control of your METTLER-TOLEDO product inspection assets from wherever you are, whenever you need to.

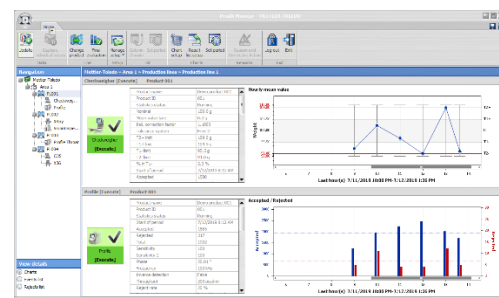
Once you have installed the software and connected your inspection devices on your local site accessing the data from a remote location is as easy as accessing on the PC in your on-site office.

Prerequisites for remote access:

- ProdX Monitor and Data manager installed on the PC/laptop you are using remotely
- Internet access
- Secure VPN connection to your company network

After you have a secure connection you can:

1. Monitor the production lines or a single inspection device, the events and rejects.
2. Create reports via a web browser and print it locally or save it as a file. With ProdX v2.3 you don't have to login to ProdX through your company network. You can set-up automated reports to be sent directly to your email at the end of a batch or shift.
3. In addition, you can set-up ProdX alerts to send you a notification to your mailbox or mobile device to immediately alert you if there is a quality or production issue which requires your immediate attention.



Performance test per device											
Date	Time	Production Line	Product Name	Batch	Status	Rejects	Mean	Std	Frequency	Control	Signal
19/02/19	10:00:00	001	Product A	1000	OK	0	100.0	0.0	100	Yes	No
19/02/19	10:05:00	001	Product A	1000	OK	0	100.0	0.0	100	Yes	No
19/02/19	10:10:00	001	Product A	1000	OK	0	100.0	0.0	100	Yes	No
19/02/19	10:15:00	001	Product A	1000	OK	0	100.0	0.0	100	Yes	No
19/02/19	10:20:00	001	Product A	1000	OK	0	100.0	0.0	100	Yes	No
19/02/19	10:25:00	001	Product A	1000	OK	0	100.0	0.0	100	Yes	No
19/02/19	10:30:00	001	Product A	1000	OK	0	100.0	0.0	100	Yes	No
19/02/19	10:35:00	001	Product A	1000	OK	0	100.0	0.0	100	Yes	No
19/02/19	10:40:00	001	Product A	1000	OK	0	100.0	0.0	100	Yes	No
19/02/19	10:45:00	001	Product A	1000	OK	0	100.0	0.0	100	Yes	No
19/02/19	10:50:00	001	Product A	1000	OK	0	100.0	0.0	100	Yes	No
19/02/19	10:55:00	001	Product A	1000	OK	0	100.0	0.0	100	Yes	No
19/02/19	11:00:00	001	Product A	1000	OK	0	100.0	0.0	100	Yes	No
19/02/19	11:05:00	001	Product A	1000	OK	0	100.0	0.0	100	Yes	No
19/02/19	11:10:00	001	Product A	1000	OK	0	100.0	0.0	100	Yes	No
19/02/19	11:15:00	001	Product A	1000	OK	0	100.0	0.0	100	Yes	No
19/02/19	11:20:00	001	Product A	1000	OK	0	100.0	0.0	100	Yes	No
19/02/19	11:25:00	001	Product A	1000	OK	0	100.0	0.0	100	Yes	No
19/02/19	11:30:00	001	Product A	1000	OK	0	100.0	0.0	100	Yes	No
19/02/19	11:35:00	001	Product A	1000	OK	0	100.0	0.0	100	Yes	No
19/02/19	11:40:00	001	Product A	1000	OK	0	100.0	0.0	100	Yes	No
19/02/19	11:45:00	001	Product A	1000	OK	0	100.0	0.0	100	Yes	No
19/02/19	11:50:00	001	Product A	1000	OK	0	100.0	0.0	100	Yes	No
19/02/19	11:55:00	001	Product A	1000	OK	0	100.0	0.0	100	Yes	No
19/02/19	12:00:00	001	Product A	1000	OK	0	100.0	0.0	100	Yes	No

ProdX@mt.com
Springer MT

Alarm/Exception: Performance test failed

3/19/2020 11:42:49 AM - Event: Performance test failed Production line:
 Production Line 001 Device name: MD
 Product: product 001
 Process action: Metal inspection

Remote working has its challenges and although you may not be able to work as usual, you can keep track of things.

For more information: Please contact your local METTLER TOLEDO representative. All contact details can be found on www.mt.com/contact