



OptiMax™ HFCal Quick Start Guide

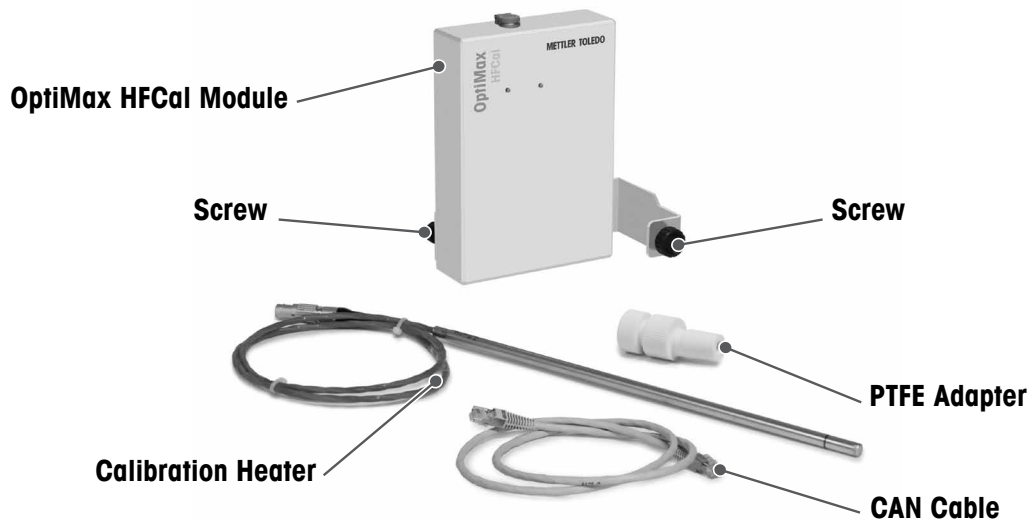
Installation and Set-up

METTLER TOLEDO

OptiMax™ HFCal Quick Start Guide

This document will guide you through the steps to set up the HFCal on an OptiMax. For in-depth information on installation, use and spare parts of the OptiMax HFCal, please refer to the Operating Instructions (30047278 OptiMax HFCal Operating Instructions).

1. Equipment



2. Connect the CAN Cable



- Connect the CAN cable to the OptiMax HFCal Module (CAN In).

3. Fasten the OptiMax HFCal Module to the Lab Bar



- Tighten the screw to the lab bar. The second screw is already available on the OptiMax lab bar.
- The fixing bar of the OptiMax HFCal is provided assembled: you can rotate it 180° and reassemble it, in order to fix it on the other lab bar of the OptiMax.
- Make sure the OptiMax HFCal Module is fastened tightly.

4. Connect the OptiMax HFCal Module to the OptiMax



- Connect the CAN cable to the OptiMax (CAN Out).
- The LED of the OptiMax HFCal turns green.
- **NOTE:** Make use of CAN Out to connect other CAN based units (i.e. DU SP-50).

5. Connect the Calibration Heater



- Connect the calibration heater to the dedicated socket of the OptiMax HFCal Module.

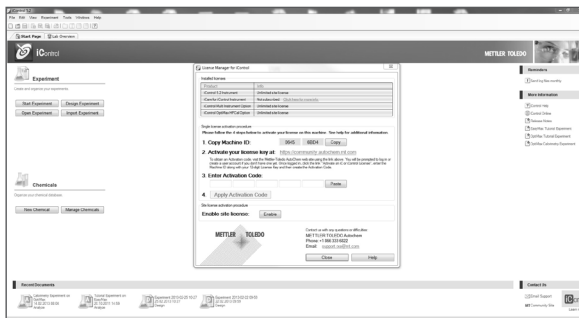


- Insert the calibration heater into the PTFE adapter.



- Insert the two assembled elements into the reactor.
- **NOTE:** Mind the minimum immersion depth.

6. iControl



- Make sure iControl and OptiMax HFCal licenses are activated. In order to learn more about OptiMax HFCal licensing, please refer to the iControl Help File, chapter Licensing.

OptiMax™ HFCal Quick Start Guide

Installation and Set-up

www.mt.com/OptiMaxHFCal

For more information

Mettler-Toledo AG, AutoChem

Sonnenbergstrasse 74
CH-8603 Schwerzenbach, Switzerland
Phone +41 44 806 7711
Fax +41 44 806 7290

Email support.rxe@mt.com
Internet www.mt.com/autochem

Subject to technical changes.
© 04/2013 Mettler-Toledo AG, AutoChem
Printed in Switzerland, 30047310



Quality certificate. Development, production and testing according to ISO 9001.



Environmental management system according to ISO 14001.



European conformity. The CE conformity mark provides you with the assurance that our products comply with the EU directives.