

Nederlands Meetinstituut

EC type-approval certificate

Number **T6361** revision 0
Project number 306445
Page 1 of 5

Issued by NMI Certin B.V.
Hugo de Grootplein 1
3314 EG Dordrecht
The Netherlands

Notified Body Number 0122

In accordance with The Council Directive 90/384/EEC on non-automatic weighing instruments.

Applicant Mettler-Toledo GmbH
Im Langacher
8606 Greifensee
Switzerland

In respect of A class **I**, self indicating, electronic, single-interval, single-range
non-automatic weighing instrument.
Manufacturer : Mettler-Toledo
Type : XS...

Characteristics $50 \text{ g} \leq \text{Max} \leq 220 \text{ g}$
 $e = 1 \text{ mg}$
 $d \leq e \leq 100d$
 $n \leq 220000$ divisions

Temperature range $+10 \text{ }^\circ\text{C} / +30 \text{ }^\circ\text{C}$

In the description number T6361 revision 0 further characteristics are described.

Valid until 12 November 2013

Description and documentation The instrument is described in the description number T6361 revision 0 and documented in the documentation folder T6361-1, appertaining to this EC type-approval certificate.

Delft, 12 November 2003
NMI Certin B.V.

P.P.M. van Enckevort
Manager Certification Delft

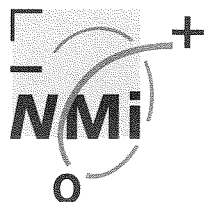
Nederlands Meetinstituut
Hugo de Grootplein 1
3314 EG Dordrecht
Telephone +31 78 6332332
Telefax +31 78 6332309

NMI B.V.
(Chamber of Commerce no.27.228.701)

Subsidiary companies:
NMI Van Swinden Laboratorium B.V. (27228703)
NMI Certin B.V. (27.233.418)
Verispect B.V. (27.228.700)

This document is issued under the provision that NMI. B.V. nor its subsidiary companies accept any liability.

Reproduction of the complete document is allowed. Parts of the document may only be reproduced after written permission.



1 General information about the non-automatic weighing instrument

All properties of the non-automatic weighing instrument, whether mentioned or not, may not be in conflict with the legislation.

1.1 Essential parts

See drawing "Prinzipschema", drawing number ME-11106995;
The electronics;
The mechanical assembly with weighing cell.

EMC protection measures:

- The electronic boards and the weighing cell are placed in a metal case;
- Ferrite around the flatcables between the main board and the housing of the weighing cell.

1.2 Essential characteristics

Power supply: 100 - 240 V AC, 50/60 Hz.

1.3 Essential shapes

The non-automatic weighing instrument is built according to drawings:

- "XS-Balances", drawing number ME-11505515;
- "Carrying handle, Electronics, Frontcover", drawing number 11780583 / 3-4;
- "Cantilever arm", drawing number 11780583 / 3-5.

The data plate is secured against removal by sealing or will be destroyed when removed.

To secure components that may not be dismantled or adjusted by the user, the non-automatic weighing instrument has to be secured in a suitable manner on the locations indicated in drawing:

- "Position of metrological markings, stickers and securing sticker", drawing number ME-11505518.

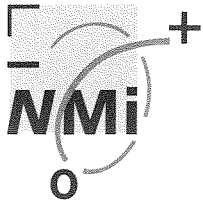
The securing component has to bear either:

- A mark of the manufacturer laid down in a notified body approved quality system (Annex II of the directive 90/384/EEC), or
- An official mark of a Member State of the EEC, or an other party to the EEA agreement.

1.4 Conditional parts

The non-automatic weighing instrument may be equipped with peripheral equipment which is used for the applications listed in article 1(2)(a) of the EC Directive (90/384/EEC), if the peripheral equipment is certified to be connected to an EC type-approved non-automatic weighing instrument by a Notified Body appointed to certify non-automatic weighing instruments according to paragraph I of Annex II of the EC directive on Non-Automatic Weighing Instruments.

A level indicator that shows that the maximum tilt is being exceeded.



Nederlands Meetinstituut

Description

Number **T6361** revision 0

Project number 306445

Page 3 of 5

1.5 Non-essential parts

The non-automatic weighing instrument may be connected to non-essential devices, for example but not limited to bar code readers, foot switches, second display's and cash drawers, provided that:

- They do not present primary data used for purposes mentioned in article 1(2)(a) of the EC Directive (90/384/EEC) unless the "preliminary observations" in Annex 1 of this directive is satisfied.
- They do not lead to an instrument having other essential characteristics than those fixed by this type-approval document.

AC/DC-adapter.

2 Information about the main constituent parts of the non-automatic weighing instrument

2.1 The electronics

2.1.1 Essential parts

Description	Drawing number	Rev.	Remarks
Main board Main board Tigris2	ME-11106912 11106912	C 7832	Drawing Parts list (10 pages)
Transducer board Transducer board VAR.1	ME-11106924 11106924	A 7448	Drawing Parts list (3 pages)

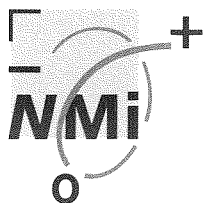
2.1.2 Essential characteristics

List of devices:

- Determination stability of equilibrium;
- Semi-automatic zero-setting;
- Initial zero-setting;
- Zero-tracking;
- Semi-automatic subtractive tare setting;
- Tare weighing;
- Gross weighing;
- Indication of unstable equilibrium;
- Automatic span adjustment (FACT) with internal calibration mass; operational when:
 - 0.5, 1, 1.5 and 2 hours after switch on and then with $\Delta t = 1.0 \text{ }^\circ\text{C}$;
 - On every 24 hours.
- Semi-automatic span adjustment with internal or external calibration mass;
- Acting upon significant faults;
- Checking the display;
- Underhook weighing;
- Weight unit selection (g, mg, custom units in the form of xxxx);
- Indications other than primary indications;
- Indication of additional information;
- Downloading coded non-metrological software as flashfiles;
- Formulation for adding different components;
- Statistics;
- Determination of the density.

2.1.3 Conditional parts

AC/DC adapter Model: PSU30A-3, Input 100-240 V AC, Output 12 V DC, I_{\max} 2.25 A, P_{\max} 27 W.



The interface section is located on the main board. The non-automatic weighing instrument may be equipped with one or more of the following protective interfaces that have not to be secured:

- RS232C.

2.1.4 Non-essential parts

Display;
Keyboard.

2.2 The mechanical assembly with weighing cell

2.2.1 Essential parts

Description	Drawing number	Rev.	Remarks
Weighing cell	11780583 / 3-6	9/2003	

2.2.2 Essential characteristics

Characteristics of the available weighing cells:
Max = 280g and $e \geq 1$ mg.

2.2.3 Essential shapes

Description	Drawing number	Rev.	Remarks
Weighing cell	11780583 / 3-6	9/2003	

3 Approval conditions

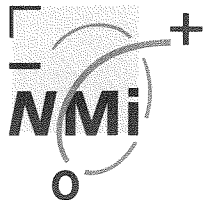
See chapter 1.3, essential shapes.

4 Seals and verification marks

See chapter 1.3, essential shapes.

5 CE-mark of conformity and inscriptions

The marks, facilities for the marks and the inscriptions on the non-automatic weighing instrument fulfill the requirements of article 1 of Annex IV.



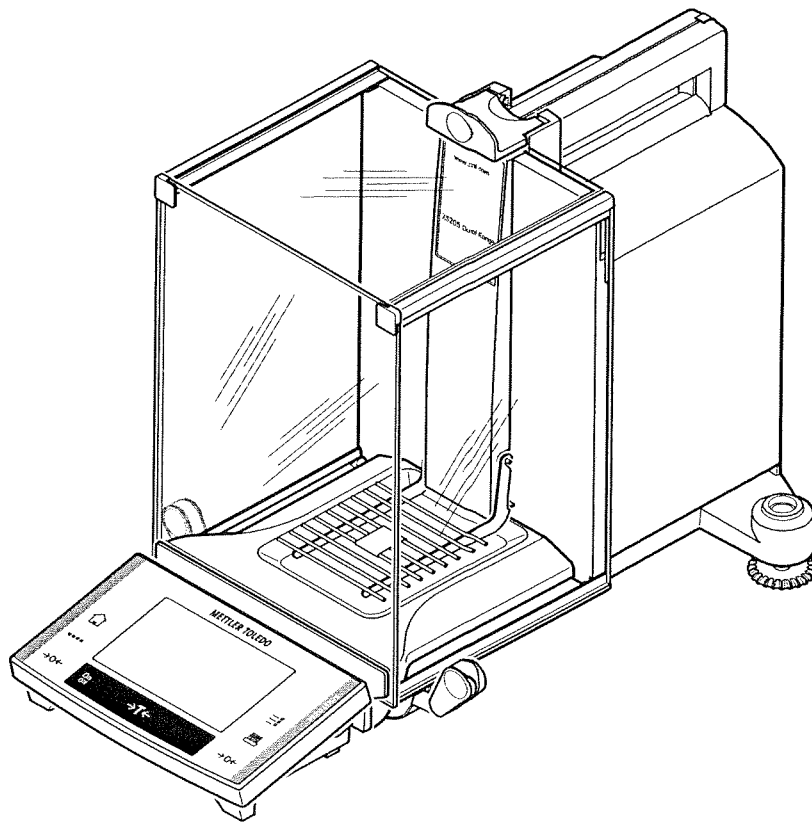
Nederlands Meetinstituut

Documentation folder

Number **T6361-1**
Project number 306445
Page 1 of 1

Description	Drawing number	Rev.	Remarks
XS-Balances	ME-11505515	--	
Carrying handle, Electronics, Frontcover	11780583 / 3-4	9/2003	
Cantilever arm	11780583 / 3-5	9/2003	
Position of metrological markings, stickers and securing sticker	ME-11505518	--	
Prinzipschema	ME-11106995	A	
Main board Main board Tigris2	ME-11106912 11106912	C 7832	Drawing Parts list (10 pages)
Transducer board Transducerboard VAR.1	ME-11106924 11106924	A 7448	Drawing Parts list (3 pages)
Weighing cell	11780583 / 3-6	9/2003	

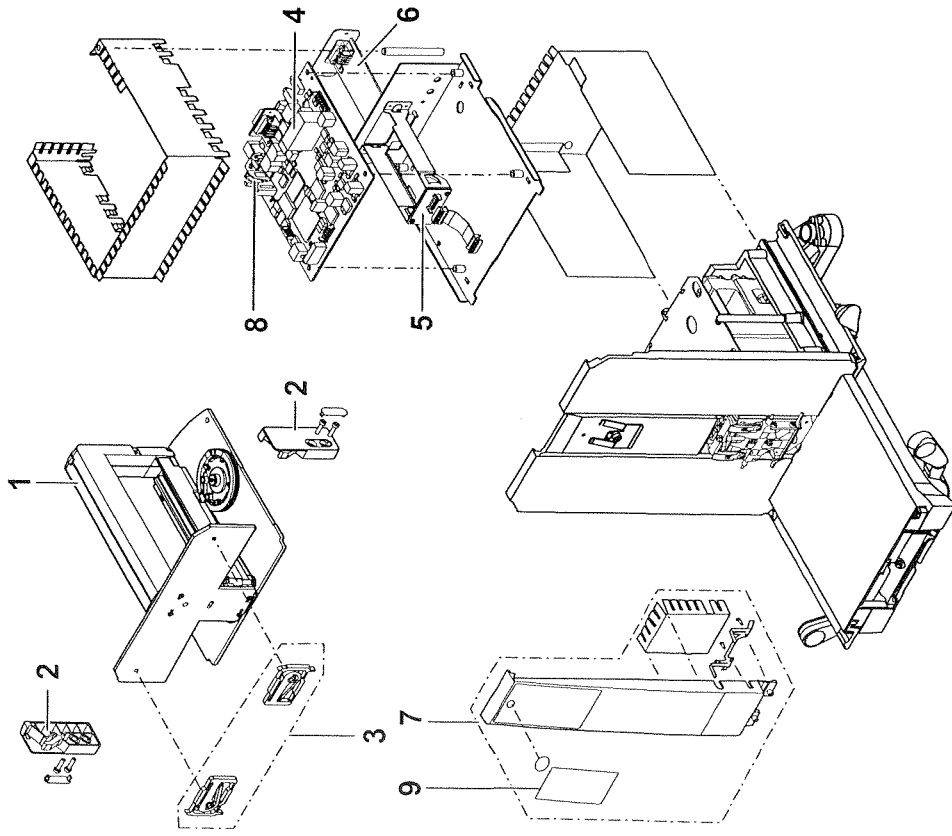
XS - Balances



ME-11505515



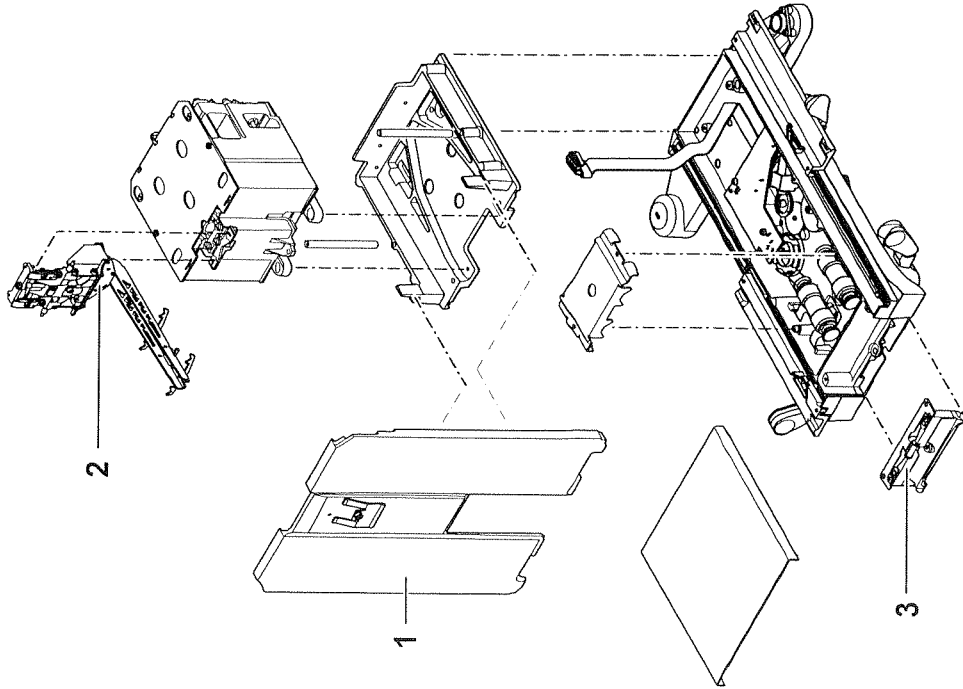
3 Carrying handle, Electronics, Front cover



Item	Designation	Note	Order No.
1	Carrying handle compl.	with item 2	11106816
2	Upper glass hoder		11106817
3	Clip side glass	-	11106496
4	Scale PCB	without Software without item 8	11106835
5	Housing and item. 6	with cable	11106952
6	Interface RS232C	-	11132500
6	Interface LocalCan	-	11132505
7	Front cover	with item 9	11106815
8	Battery	-	86320
9	Model strip	-	11106834



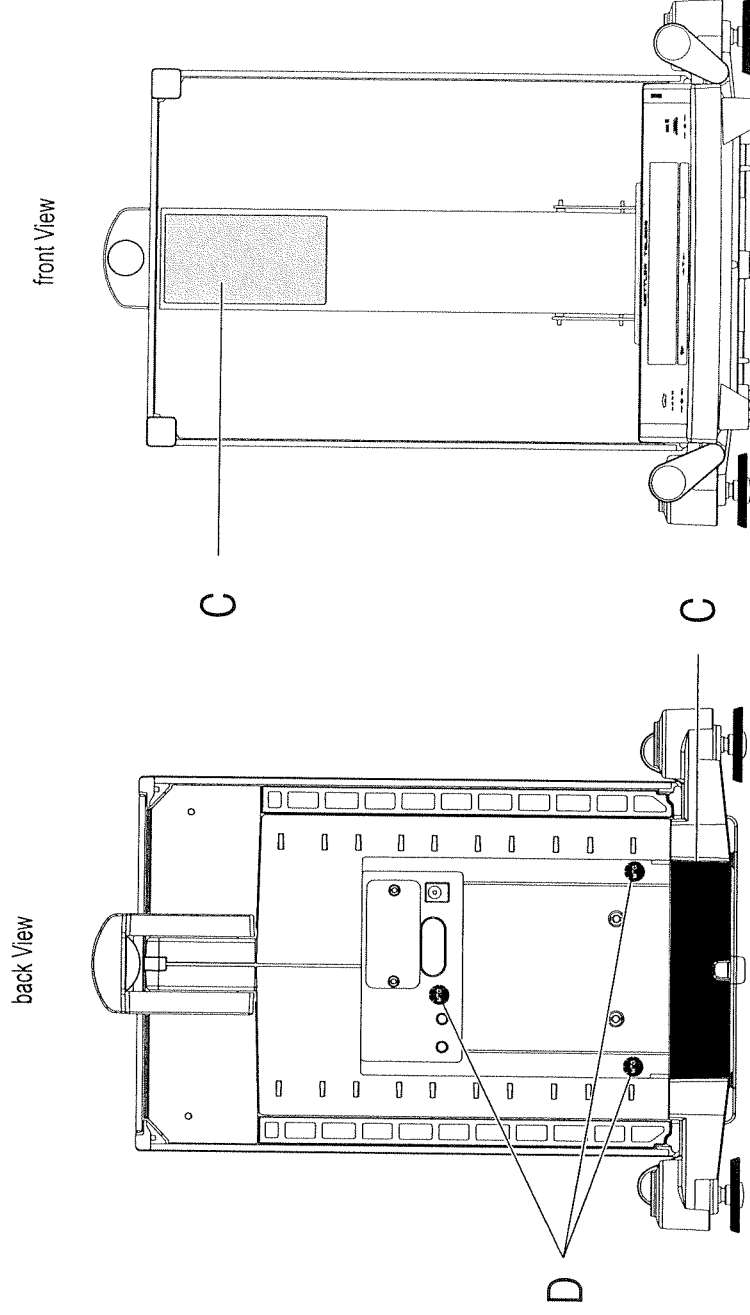
4 Cantilever arm



Item	Designation	Note	Order No.
1	Partition	-	11106352
2	Cantilever arm 200 g	mounting, adjusting	11106827
3	Holder front glass	-	11106358

XS64B
XS104B
XS105BDU
XS204B
XS204BDR
XS205BDU

XS - Balances



Code	Description
C	Metrological markings
D	Securing sticker

Position of metrological markings stickers and securing sticker.

ME-11505518