

FormToolXP – Operating Instructions



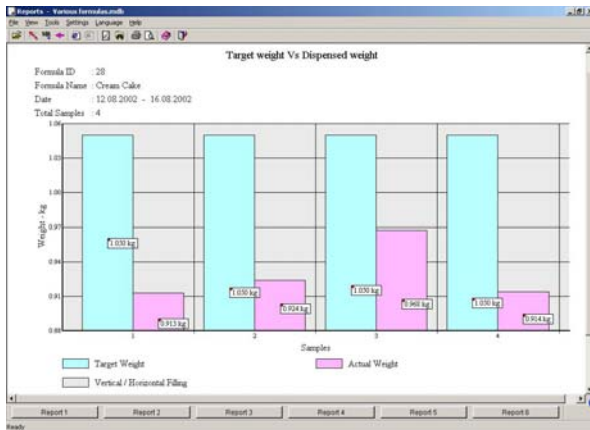
Tracking of dispense in real-time

The screenshot shows the 'DB Configuration' window. It contains two tables:

Index	Formula ID	Formula Name	Pre Msg 1	Pre Msg 2
1	52	Cream Cake	Use clean container	Wash hands
2				
3				
4				
5				
6				

Index	RM ID	RM Name	Weight	Tolerance	Pre Msg	Post Msg
1	713	Baking powder	0.2 kg	5 %		
2	14	Flour	0.5 kg	0.025 kg		
3	5	Sugar	0.1 kg	0.005 kg		
4	92	Cream	0.1 kg	5 %		
5	22	Milk	0.5 kg	5 %		Stir 5 Min.

Design of raw materials, messages and formulas



Reports based on standard or individual queries

The screenshot shows a report titled 'Overview of formulas' with the following data:

Formula ID	Formula Name	Target Weight	Raw Material ID	Raw Material Name	Target Weight	Tolerance
100	Cleaner	0.900 kg	1	Water	0.5 kg	10 %
100	Cleaner	0.900 kg	2	Acid	200 g	15 %
100	Cleaner	0.900 kg	3	Colour	0.1 kg	5 %
4711	Perfume	265 g	11	Water	200 g	5 %
4711	Perfume	265 g	14	Essence XY	60 g	5 %
4711	Perfume	265 g	15	Spice A	10 g	10 %
4711	Perfume	265 g	16	Sugar	5 g	10 %
155	Cream Cake	0.5 kg	17	Baking powder	0.1 kg	10 %
155	Cream Cake	0.5 kg	18	Flour	0.5 kg	5 %
155	Cream Cake	0.5 kg	16	Sugar	0.1 kg	10 %
155	Cream Cake	0.5 kg	19	Cream	0.1 kg	10 %
155	Cream Cake	0.5 kg	10	Milk	0.2 kg	0.02 kg
149	Peppi	1.350 kg	11	Eggs	2 Pcs	0 Pcs
149	Peppi	1.350 kg	11	Water	1 kg	10 %
149	Peppi	1.350 kg	16	Sugar	0.3 kg	10 %
149	Peppi	1.350 kg	13	Colour	50 g	1 %

Table of contents

1. INTRODUCTION TO MT-FORMTOOL	5
2. CONNECTING TO ID7	6
a. Multi-Instance feature	7
b. Table IDs (TIDs)	8
3. FILE OPERATIONS	8
a. Creating a new file.....	8
b. Opening a file.....	8
c. Saving a file	9
d. Export Database	9
e. Import Database	9
4. MONITORING APPLICATIONS.....	10
a. Formulation.....	10
b. Pharma Formulation	11
c. Totalizing.....	11
d. Stored Formulation	12
e. Switching between applications.....	15
5. STORED FORMULATION DATABASE	15
a. Designing Raw Materials	15
b. Designing Formulae.....	16
c. Designing Messages.....	18
d. Sending Database to ID7	19
e. Reading Database form ID7	19
f. Synchronizing Database with ID7.....	20
g. Session Information.....	20

6. REPORT GENERATION	21
a. Reports – Introduction.....	21
b. Starting Wizard.....	21
c. Graph Options	22
d. Advanced Reports.....	23
e. Opening a Database file for Reports	23
f. Visualizing Multiple ID7 Terminal Reports.....	23
g. Visualizing Reports for Multiple Users	24
h. Stored Formulation Reports	25
i. Formulation Reports.....	28
j. Totalizing / Pharma Formulation Reports.....	29
k. Individual queries with Advanced Reports.....	29
l. Saving Reports	39
m. Accelerator Keys	39
n. Using Templates.....	41
o. Header / Footer Configuration	41
p. Changing Fonts and Colors in Reports	42
q. Adding Tags.....	43
r. Printing Reports	43
s. Linear / Non-Linear Scales	44
t. Impact on modifying database	44
7. ID7 DISPLAY PANEL	45
8. MULTI-LINGUAL SUPPORT	45
9. MANAGING SESSIONS	46
10. UPDATING STOCK	47
11. INVENTORY CONTROL	47

12. USER MANAGEMENT.....	49
13. ERROR MESSAGES	50
14. DATABASE STRUCTURE.....	51
a. DB configuration Tables.....	52
b. Stored Formulation Dispensing Tables	53
c. Formulation Tables	56
d. Pharma Formulation Tables.....	56
e. Totalizing Tables	57
15. UNINSTALLING THE SOFTWARE	57
16. GLOSSARY	58

1. Introduction to MT-FormTool

MT-FormTool © is a companion product of FormPac-XP on ID7. It is designed to run on the following Microsoft platforms: Windows-98, Windows2000 and Windows XP. MT-FormTool uses Microsoft Access 97 for accessing the database. However it is not necessary to install MS Access on the PC if it is not already installed. The necessary components for creating and accessing MS-Access compatible files are packaged with the FormTools. The main features of MT-FormTool are listed below:

FormPac-XP Configuration Support (for Stored Formulation application)

- MT-FormTool supports design of Formula, creation and maintenance of Raw Material Table and Message Tables (for Stored Formulation application) easily on the PC and to download them to ID7. These tables (database) can be saved on the local PC for subsequent use. FormTool can also read the existing databases from ID7, which can be saved on a PC. In case of updates to any of the tables, where only part of the database is modified, the “Sync” option provides convenient and fast mechanism for synchronizing the PC-based database with FormPac-XP on ID7.

Process Monitoring and Visualization (for all applications of FormPac-XP)

- MT-FormTool can be used to monitor the FormPac-XP dispensing details in real-time. It stores the dispensing details of all the four applications of FormPac-XP: Formulation, Pharma-Formulation, Totalizing and Stored-Formulation.

Reports (for all applications of FormPac-XP)

- MT-FormTool has capability to provide a wide range of reports, based on the data collected during FormPac-XP operation. Report Generation Wizard is used to generate graphical and text reports, based on the dispensed details of all the four applications. It provides various analysis for all the four FormPac-XP applications. Data can be displayed graphically in several formats: Tables, Histograms, Pie Charts or Graphs. The reports can be saved (as HTML files or Excel files) and also printed.

Multi-Instance Support

- An instance of MT-FormTool on a PC can be connected to one ID7 terminal that runs FormPac-XP to track the operations. Multiple instances of the tool can be invoked to track multiple FormPac-XP terminals and the data can be logged to a single database file for consolidation of results. The identity of each ID7 terminal is maintained by assigning a unique Terminal-Id to every instance of FormPac-XP. Reports can be generated for each terminal or for all terminals from which data was collected.

User Management

- User management determines the level of access to the MT-FormTool. There are 3 different types of users namely Administrator, Supervisor and Operators. There can be 2 Supervisors and 5 Operators. The Administrator has all the rights where as the Supervisors and Operators are restricted to some operations. While Supervisor-level user can change and update Database records on FormPacXP, Operators are only allowed to log data and produce reports. Whereas user with Administrator privilege can setup new database tables and terminals.

Inventory Control

- Inventory control tracks stocks in all ID7 terminals associated with the current database file. Stocks of the ID7 terminals can be managed individually, all together or in groups or even be ignored. And the option 'Update Stock' can be used to update the stock values alone on the ID7.

Multi-Language Support




- Multi-Lingual support is available for the following languages.
 1. German
 2. English
 3. French
 4. Dutch
 5. Italian
 6. Spanish

2. Connecting to ID7

Whenever the application starts, it will try to connect to the ID7 terminal.

- When the application starts for the first time, Interface Settings dialog box will appear with the standard settings. Specify the interface parameters and press **OK** button. Now, the application will try to connect to ID7. The status bar will show the current status of the application.

If there is no response from ID7 or if the communication settings are wrong, error message will be shown. In this case, correct interface settings have to be provided.

- 1) Now, disconnect from ID7 by selecting **Disconnect** option from the **File** menu or press Disconnect  toolbar button.
 - 2) Change the interface settings by selecting **Interface Settings** from the **Options** menu or press Settings  toolbar button. The **Interface Settings** option is enabled only when the application is not connected with ID7.
 - 3) After changing interface settings, select **Connect** from the **File** menu (or press Connect  toolbar button) to connect again to ID7. The interface settings have to correspond to those available on FormPacXP.
- If connected properly, the application will read and verify certain data from ID7. If the connected ID7-FormPac-XP unit is not licensed for using MT-FormTool, a warning message will be displayed. In this case, the transaction (dispensing) details are not tracked. Please contact Mettler Toledo Service for upgrade.
 - The application will continue to read the **Terminal-Id** from ID7 (stored in AB004) and makes an entry in the registry.

If the terminal-id is empty (not assigned) in ID7, the application will provide an option to assign a unique terminal-id for the connected ID7 terminal. The Terminal-Id dialog box will appear.

- 1) Enter the Terminal-Id (max of 20 characters) in the edit box.
- 2) Press **OK** button.

The application will write the user-input terminal-id into ID7. If terminal-id is not entered, it will be taken as '**Unassigned**'. The terminal-id is shown in the status bar.

- After verifying the terminal-id, the application will open the corresponding database file. If the tool is connected with an ID7 terminal for the first time, database file name need to be provided. Enter a new file name or an existing file name. This file will be associated with the connected ID7 terminal.
- If **Inventory Control** is enabled and **Enable Store** option is enabled, then a dialog box is shown with an option to assign the connected terminal with a store. For more details refer the title **Inventory Control**.
- The **ID7 display panel** will show the current scale weight in ID7 with the scale unit and scale-id details.
- MT-FormTool finds the current application set in ID7 and switches to the corresponding application. The current application name is shown in the window title.
- If the current application is set to Stored Formulation, then MT-FormTool checks the stored formulation database Table-Ids (TIDs) set in ID7 and in MT-FormTool database file. If the table ids are not same, it means that the stored formulation database in ID7 and in PC are different. To synchronize the database and for more information, see **Table-IDs** section.

For every connection, the session information is maintained in the database file. For more information about session details, see **Session information** section.

a. Multi-Instance feature

MT-FormTool can track multiple FormPac-XP by instantiating multiple instances of the tool on the same PC.

- MT-FormTool maintains the settings of each ID7 terminal separately based on the Terminal-Id in the system registry. For every ID7 terminal, the tool maintains the database file name and communication parameters separately with a unique terminal-id.
- When MT-FormTool is connected to ID7, it reads the terminal-id from ID7 and gets the corresponding terminal details from the system registry and loads the corresponding database file.
- If two or more terminals are available, the tool can be connected to an ID7-terminal by selecting the **Terminal-Id** option in the **Interface Setting** dialog box.
- The same database file can be used to monitor more than one ID7 terminal. The dispensing details from all the ID7 terminals will be stored in a single file if the same database file is used for all the terminals.

Note:

If an ID7 terminal is connected with MT-FormTool through COMM port (or Ethernet), and if another instance of MT-FormTool is trying to connect with the same ID7 through Ethernet (or COMM port) from some other PC, then only the latest connected MT-FormTool instance will receive the state messages from ID7. The previously connected MT-FormTool instance (through COMM or Ethernet) won't get any messages from ID7.

Do not try to connect MT-FormTool with an ID7, which is already connected with another MT-FormTool instance.


b. Table IDs (TIDs)

Table IDs (TIDs) are 16 bit signatures maintained to track the changes in Stored Formulation database. Three TIDs are maintained separately for Raw materials table, Formula table and Message table

Whenever the stored formulation database is changed in MT-FormTool, it updates the TIDs for the corresponding tables.

When MT-FormTool is connected with ID7, it verifies the TIDs with ID7. If the TIDs are different, a window with all TIDs details is shown. The TIDs of changed tables are shown with bold letters. Accept the message and press OK to continue.

To synchronize the Stored Formulation database:

1. Open DB configuration window by selecting **DB Configuration**  from the **Tools** menu.
2. Select **Read/Sync/Send** option.

When the synching operation is completed, TIDs are updated in ID7.

Every time MT-FormTool is connected with ID7, it logs the session information in the database file. See Session Information for more details.

3. File Operations

a. Creating a new file


To create a new file, follow the steps below.

1. Select **New** from the File menu or press **New**  toolbar button. New file dialog box appears.
2. Enter a name for the new file
3. Press **Save** button.

A new database file is created and will be opened by the application. In the window title, the newly created file name is shown.

b. Opening a file

To open an existing database file, follow the steps below.

1. Select **Open** from the **File** menu or press **Open**  toolbar button. **Open File** dialog box appears.
2. Select the file.
3. Press **Open** button.

If the specified file is a valid database file, the application will open the file. If the file is not a valid file, then error message will be shown. The opened file name is shown in the window title.

c. Saving a file

This option saves the currently opened database file with a new name. To save the file, follow the steps below.

1. Select **Save As** from the **File** menu or press **Save As**  toolbar button. **Save As File** dialog box appears.
2. Enter a name for the new file.
3. Press **Save** button.

The current database file is saved with the new name. The newly created file serves as the current file.

d. Export Database

Exporting database will copy the Stored Formulation tables to the given database file from the currently opened file. **Save As** option copies the entire set of tables including Transaction records, where as **Export** will copy only Stored Formulation tables- RM Table, MSG Table and Formula Table. You can open the newly exported file as any other database file.

The following procedure can be used to export database contents.

1. Open the existing database file where the formula / raw material details have to be changed.
2. Select **Export** from the File menu.
3. Enter NEW file name and press Save button. The DB Configuration contents will be exported to this file.

The **Export** option will be mainly used when the stored formulation database is changed. Please refer the topic **Impact on modifying database** for more details.

e. Import Database

Import database option will copy the Stored Formulation tables from the given database file to the currently opened file. For importing database, the corresponding tables in the current file should be empty. That is, a new set of Stored Formulation Tables cannot be imported into a Database file that has these tables established. The import operation is allowed only once – when a New Database File is opened (after File->New operation).

The following procedure can be used to create a new file with exported database contents.

1. Create a New Database File.
2. Select **Import** from the File menu and Import the saved DB Configurations. That is, enter the file name whose DB configurations have to be copied to the currently opened file.
3. The Stored Formulation tables will be imported from the existing database file to the new file.
4. Now change the database contents in the new file and download (or sync) this file to ID7 and start using this file.

The **Import** option will be mainly used when the stored formulation database is changed. Please refer the topic **Impact on modifying database** for more details.

4. Monitoring Applications

MT-FormTool will monitor the dispensing details of all applications in FormPac-XP. The following applications are monitored by the MT-MT-FormTool.

- Formulation
- Pharma Formulation
- Totalizing
- Stored Formulation

a. Formulation

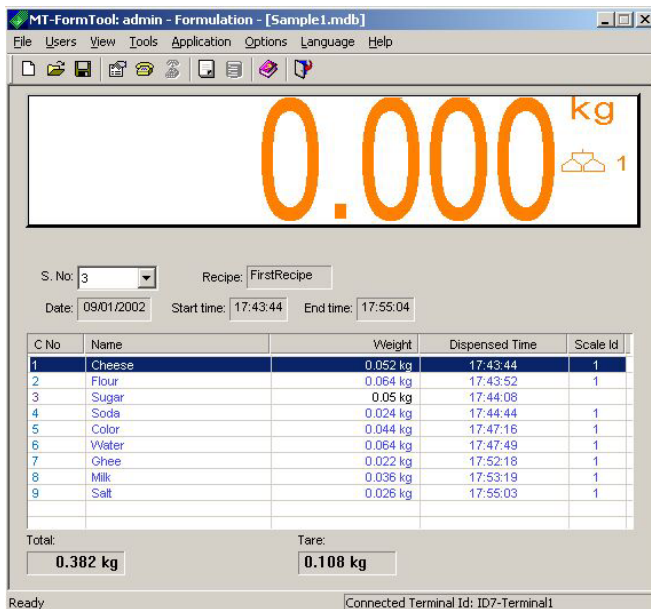
In Formulation, the containers and their individual component weights are monitored by the MT-FormTool.

Each container is tracked by a serial number. For every container, the tool shows the recipe (formula) name, start date, start time and end time.

The component details for the selected container are shown in the table view. The table view shows the component number (1-15), component name, dispensed weight, dispensed time and the scale id in which it is dispensed.

For components dispensed using scale, the weight in the table view is shown in **blue** color. For manually dispensed components, the dispensed weight is shown in **black** color.

In Formulation application, the main window will look like the figure below.

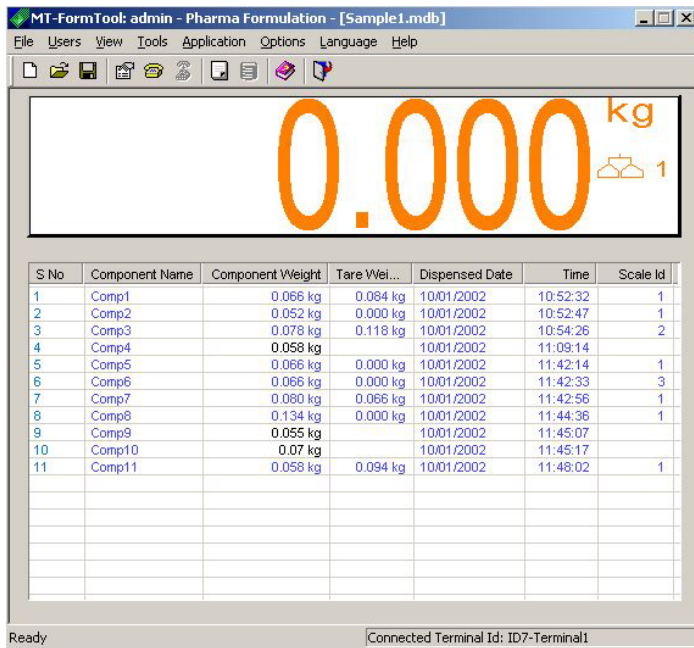


b. Pharma Formulation

The tool tracks the component name, dispensed weight, tare weight, dispensed date and time and scale id. All the components are shown one by one in the table view.

For components dispensed using scale, the weight in the table view is shown in **blue** color. For manually dispensed components, the dispensed weight is shown in **black** color.

In Pharma Formulation application, the main window will look like the following figure.

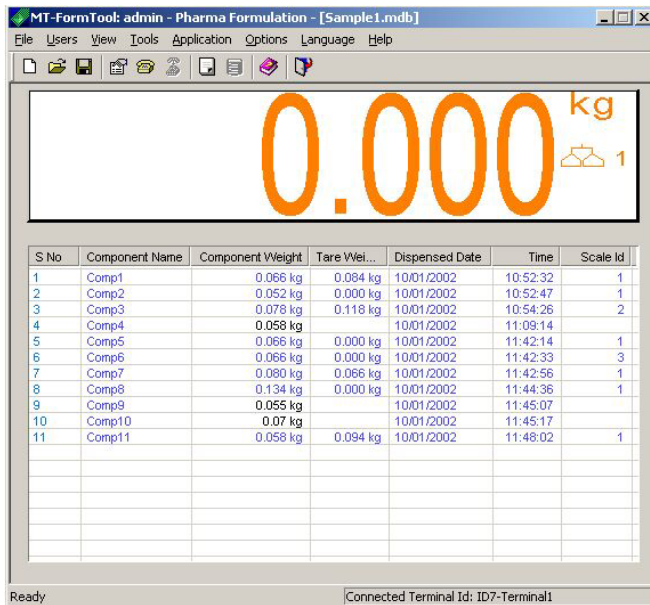


c. Totalizing

The tool tracks the component name, dispensed weight, dispensed date and time and scale id.

For components dispensed using scale, the weight in the table view is shown in **blue** color. For manually dispensed components, the dispensed weight is shown in **black** color.

In totalizing application, the main window will look like the following figure.



d. Stored Formulation

Whenever a formula is selected and dispensed in ID7, the MT-FormTool application will read and store the details of the formula selected and its compounds. When multi-charge option is enabled (Kitting) in ID7, the application will log every split-dispensed detail.

Formula Details

When a formula is selected for dispensing in ID7, MT-FormTool will read the details of the selected Formula and all of its compounds. In the main window, the formula details are shown below the ID7-Panel (Weight Display). The compound details are shown in a table.

When a formula is selected, the tool will read and display formula name, formula id, lot number, dispensing start date, start time and end time. And formula target weight, actual weight and tare weight are also shown below the table view.

Compound Details

When a compound is selected for dispensing, the corresponding compound in the table view is highlighted by means of **blinking the item with a green color**. The compound is blinked until the compound is either dispensed or cancelled.

When the compound is selected, the table view shows the compound name, target weight, tolerance weight and start time of dispensing. Once the compound is dispensed its dispensed weight, dispensed tolerance (Delta) and scale-id are updated in the table view. During dispensing the status bar displays the current state of the compound (e.g. selected, dispensed or cancelled).

Multi-charge (Kitting)

If the **multi-charge** option is enabled, the individual split dispensing details (Dispensed Wt, Charge No) will be shown in the table view for every compound.

The compounds details can be viewed in two ways namely **Expand** and **Shrink** mode. Any one of these options can be selected by right clicking the mouse on the table view and selecting the appropriate option in the pop-up menu.

The **Shrink** menu option will show only the compound name, target, tolerance, and dispensed weights. The **Expand** menu option will show all the split-weights, all charge numbers, scale id and start time (and **hides columns that has no data**).

Scale Id

If the compound is dispensed using scale (not manually), the corresponding scale id is shown in the last column of the table view. If the compound is dispensed manually, the scale-id is not shown.

Batch Mode

If a formula is dispensed in BATCH mode, the tool displays individual batch weights (for each compound) along with compound name, target and tolerance weights. The columns with labels Disp wt_1, Disp Wt_2, ... Disp Wt_N shows the batch weights, where N is total number of batches.

The charge number for each compound is shown in the last column of the table view. The formula target weight, total number of batches and the current batch id are displayed below the table view. While dispensing, the current batch id is updated with the selected batch. The status bar will display the current iteration number and compound number when the compound is selected for dispensing. The current batch id is shown only during dispensing.

Parking

If the formula is parked during dispensing, the application stops logging and the formula status is updated as **Parked**. The formula status is shown just below the ID7 display panel. When the parked formula is loaded, the application will load the corresponding formula that is already stored in the database file.

Formula Status

The **formula status** describes the dispensing status of the formula. The following are the different formula status with description.

'Dispensed' - The formula was dispensed
'Parked' - The formula was parked
'Cancelled' - The formula was cancelled
'Dispensing' - The formula is being dispensed
'Interrupted' - Dispensing was interrupted by the user
(If the user disconnects or closes the MT-FormTool application while dispensing a formula, the status is updated as 'Interrupted')

Color-coding

For manually dispensed compounds, the dispensed weight is shown in **black** color. Otherwise the dispensed weight is shown in **blue** color.

If the delta value is negative, it is shown in **red** color. It is shown in **light gray** color if it is a positive value. If the delta is exactly zero, then it is shown in **green** color.

Note:

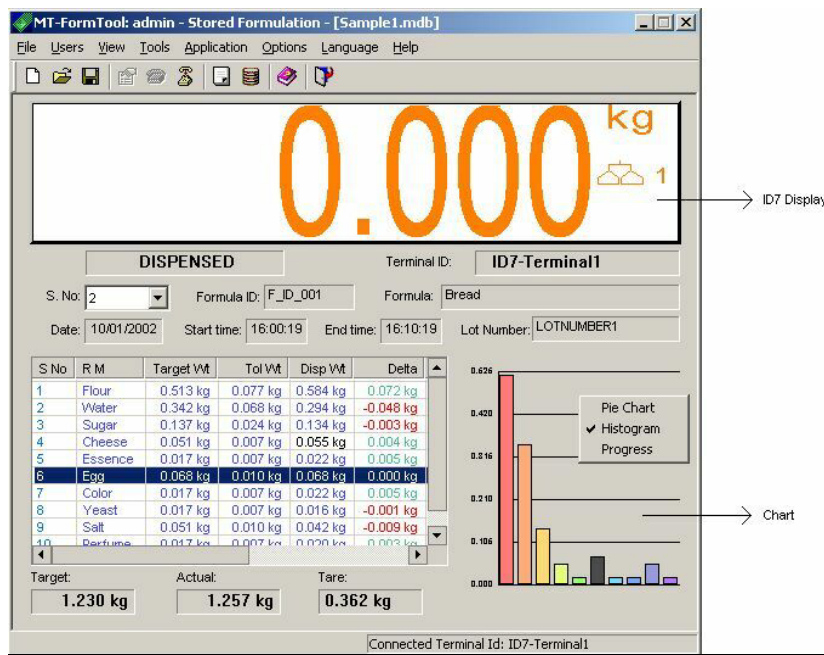
For BATCH dispensing, there is no color-coding. In batch mode, all the values are shown in blue color.

Terminal-Id

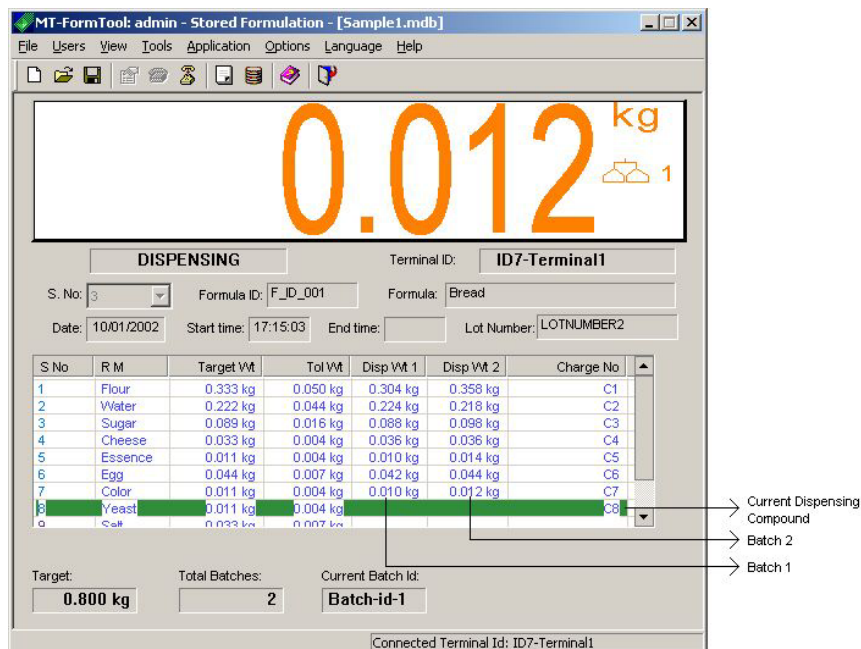
The terminal-id displayed in edit box shows from which ID7 terminal the current formula was dispensed.

The terminal-id in the status bar shows the terminal-id of the connected ID7 terminal. The terminal-id shown in the edit box (above the table view) shows the terminal-id in which the currently loaded formula is dispensed.

Screen samples



Stored formulation – Vertical/Horizontal Mode



Stored formulation – Batch Mode

Charts / Graphs

Compound weights can be visualised graphically during monitoring. Three types of graphs are provided, namely **Pie**, **Histogram** and **Progress Bar**. The required chart can be selected by right-clicking the mouse on the chart and selecting the graph option from the pop-up menu.

Different colours are used in a chart to identify dispensed compounds. Compounds that are not dispensed are shown in WHITE (default) colour.

Pie chart and Histogram supports upto 20 compounds. If more than 20 compounds exist in a formula, then they are represented via Progress Bar.

e. Switching between applications


There are four applications in FormPac-XP. Once the tool is connected with ID7, **the tool will read the current application in ID7 and switches to that application.**

Once connected, the tool cannot switch to other applications. To view the contents of other applications, first disconnect from ID7 and then choose any one of the applications from the **Application** menu. The tool will switch to the selected application and the entire window contents will show the details of the selected application (The current application is shown with a tick symbol in the Application menu). The current application is also shown in the window title.

Note:

The option **DB Configuration** in the **Tools** menu is enabled only when the current application is set to **Stored Formulation**.

5. Stored Formulation Database

To view or design formula database, select **DB Configuration** from the **Tools** menu or select  toolbar button. DB Configuration window will appear. The RM, Formula and Message toolbar items are used to edit Raw Materials, Formulae and Message databases correspondingly. By default Raw Materials table is shown.

Note:

The **DB Configuration** option in the **Tools** menu is enabled only when the current application is set to **Stored Formulation**.

a. Designing Raw Materials

Click the toolbar item named RM in DB Configuration window. The RM table is shown with 500 raw materials.

To edit a RM, follow the steps below.

- 1) Select the raw material (row in the table) to edit.
- 2) Press **Edit** button (or Right click the mouse on index (first) column and select **Edit** from the pop-up menu).
- 3) Enter the RM id (unique), Description, Message ID, Stock, Warning level. Consumed, Stock Date, Stock Time and Used Count are not editable.
- 4) Press **Save** button (or right-click on the index column and select **Save** from the pop-up menu). Or press **Cancel** button (or select **Cancel** from the pop-up menu) to cancel the updates.

Note:

If the raw material is already created, raw material id cannot be changed. To change the raw material id, delete the raw material and create it again.

RM table constraints:

- 1) RM Id can be of up to a maximum of 20 characters. It must be unique.
- 2) RM Name can be of up to a maximum of 30 characters.

To delete a raw material, follow the steps below.

- 1) Select the raw material to delete.
- 2) Press **Delete** button (or right click the mouse on index (first) column and select **Delete** from the pop-up menu).
- 3) Press **OK** button to delete the raw material or **Cancel** button to cancel the deletion.

Note:

Raw material can be deleted only if its used count is 0. For empty records, the used count will be empty.

Please refer **Impact on modifying database** topic when changing database.

The RM table will look like the following figure.

Index	RM Id	Description	MSG ID	Stock
1	Raw_Material_ID_001	Flour	Pre tare	1.000 kg
2	Raw_Material_ID_002	water	<ENTER>	2.000 kg
3	Raw_Material_ID_003	Salt		0.910 kg
4	Raw_Material_ID_004	yeast	Load container	0.000 kg
5	Raw_Material_ID_005	Grapes		1.438 kg
6	Raw_Material_ID_006	Cherry		0.000 kg
7	Raw_Material_ID_007	Milk		0.000 kg
8	Raw_Material_ID_008	Sugar		0.000 kg
9	Raw_Material_ID_009	Apple	Select scale 1	0.000 kg
10	Raw_Material_ID_010	Sugar	Load container	1.000 kg
11	Raw_Material_ID_011	Tomato		0.000 kg
12	Raw_Material_ID_012	Banana		0.000 kg
13	Raw_Material_ID_013	Pine Apple	Load container	1.908 kg
14	Raw_Material_ID_014	Orange		4.400 kg

b. Designing Formulae

Click the toolbar item named Formula in the DB Configuration window. The formula tables are shown. There are two tables in the formula. The upper table called **Formula Table** shows the formula details and the lower table called **Compounds Table** shows formula compounds details for the selected formula. There are 150 formulae in the formula table.

To edit a formula in formula table, follow the steps below.

1. Select the formula to be edited in the formula table.
2. Press **Edit** button (or right click the mouse on index (first) column and select **Edit** from the pop-up menu).
3. Enter the Formula ID, Formula name, three Pre-Messages and two Post-Messages.

4. Press **Save** button (or right-click on the index column and select **Save** from the pop-up menu). Or press **Cancel** button (or select **Cancel** from the pop-up menu) to cancel the updates.

Note:

If the formula is already created, formula id cannot be changed. To change the formula id, delete the corresponding formula and create again.

Formula table constraints:

- Formula Id can be up to maximum of 10 characters.
- Formula Id must be **unique**.
- Formula Name can be up to maximum of 30 characters.

To delete a formula in formula table, follow the steps below.

1. Select the formula to be deleted in the formula table.
2. Press **Delete** button found below the formula table (or right click the mouse on index (first) column in formula table and select **Delete** from the pop-up menu). A warning message will be displayed
3. Press **OK** button to delete the formula or **Cancel** button to cancel the deletion.

Note:

Deleting a formula deletes the formula and all of its compounds.

To add a compound, follow the steps below.

1. Select the formula to be edited in formula table. The corresponding compounds will be shown in the compounds table.
2. Select an item in the compound (lower) table.
3. Press **Edit** button found below the compounds table (or right click the mouse on index (first) column and select **Edit** from the pop-up menu).
4. Select the Raw Material ID from the (RM ID column) list. The corresponding raw material name will be shown in the next (RM Name) column.
5. Enter target weight, tolerance weight, pre-message and post-message.
6. Press **Save** button found below compounds table (or right click the mouse on index (first) column in compound table and select **Save** from the pop-up). Or press **Cancel** button (or select **Cancel** from the pop-up menu) to cancel the updates.

To add more compounds follow the steps above. The same compound can be added more than once in a formula.

Constraints:

- A maximum of 100 compounds can be added for a formula.
- Tolerance weight must be less than or equal to half of the target weight. Otherwise it can have a value up to 50%.

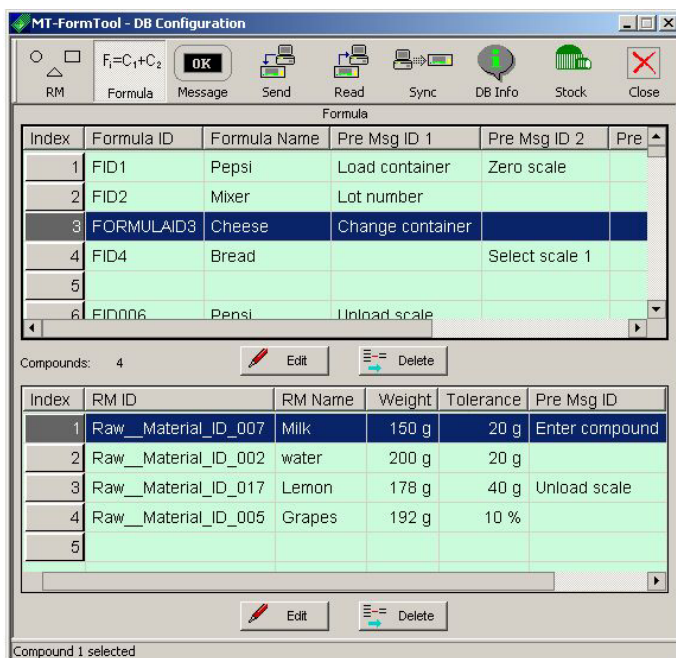
To edit/change a compound, follow the steps below.

1. Select the formula to be edited in formula table. The corresponding compounds will be shown in the compounds table.
2. Select an item in the compound (lower) table.
3. Press Edit button found below compounds table (or right click the mouse on index (first) column and select **Edit** from the pop-up menu).
4. Change the compound details.
5. After changing the compound values press **Save** button (or right click the mouse on index (first) column and select **Save** from the pop-up). Or press **Cancel** button (or select **Cancel** from the pop-up menu) to cancel the updates.

To delete a compound, follow the steps below.

1. Select the formula to be edited in formula table. The corresponding compounds will be shown in the compounds table.
2. Select an item in the compound (lower) table.
3. Press **Delete** button (or right click the mouse on index (first) column and select **Delete** from the pop-up menu). A warning message will be displayed.
4. Press **OK** button to delete the compound or **Cancel** button to cancel the deletion.

The formula table will look like the following figure.



Please refer **Impact on modifying database** topic when changing database.

c. Designing Messages

Click the toolbar item named Message in DB Configuration window. There are 200 items in the message table. First 30 messages are read-only messages and they cannot be modified.

To edit a message, follow the steps below.

- 1) Select an item (row in the table) to edit.
- 2) Press **Edit** button (or right click the mouse on index (first) column and select **Edit** from the pop-up menu).
- 3) Enter the Message text.
- 4) Press **Save** button (or right-click on the index column and select **Save**) to save the changes. Or press **Cancel** button (or select **Cancel** from the pop-up menu) to cancel the updates.

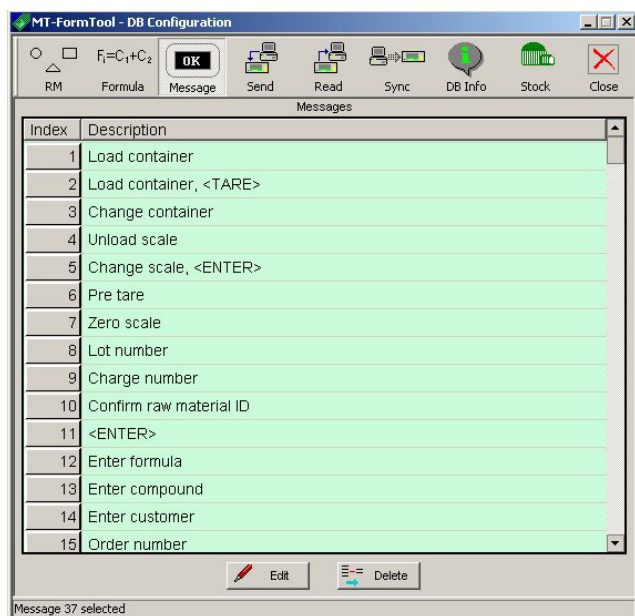
Note:

- Messages 1 to 30 are **fixed messages** and **cannot be edited**.
- Message text can be up to a maximum of 24 characters.

To delete a message, follow the steps below.

- Select an item (row in the table) to edit.
- Press **Delete** button (or right click the mouse on index (first) column and select **Delete** from the pop-up menu). A warning message will be displayed.
- Press **OK** button to delete the message or press **Cancel** button to cancel the deletion.

The message table will look like the following figure.



Please refer **Impact on modifying database** topic when changing database.

d. Sending Database to ID7

The entire database (includes Raw materials, formulae and messages) can be downloaded to ID7 by clicking the Send toolbar item. Before downloading, the application will delete all the raw materials, formulae and messages in ID7 and then it will start writing messages, raw materials and formulae to ID7. A warning message will be shown before updating the data in ID7.

e. Reading Database form ID7

1. To read the database from ID7, press the Read toolbar item in the DB Configuration window. A dialog box with the reading options will be shown.
2. To read all tables (i.e., Raw materials, Formulae and Messages), select **ReadAll** option.
3. To read individual tables, choose **Read** option and select any of the tables.
4. Press **OK** button to start reading. Now the selected tables in the local database file will be cleared to hold the new data.

5. A warning message is shown regarding this action. Press **Yes** button to clear the selected tables and start reading the selected tables from ID7.

f. Synchronizing Database with ID7

The Sync option is used to synchronize your database with the ID7. This will update the database in ID7 with the database in MT-FormTool. Once the entire database is read from ID7, database need not be downloaded every time when small changes were made.

If the entire database is read from ID7, and if any changes were made (adding, editing or deleting some records), only the changed records will be updated in ID7 by Synchronization. This can be invoked by pressing Sync toolbar item. Sync saves the time.

When this option is used, the application assumes that the user has already read the entire database recently.

If the database in ID7 is changed by some other means (i.e., without using MT-FormTool), then the sync option may not work properly. In these cases, the entire database should be read again to use sync.

g. Session Information

Every time MT-FormTool is connected with ID7, current session information is stored in the database file.

To view session information,

- 1) Open DB Configuration window by selecting **DB Configuration** (bmc DBConfig.bmp) from the **Tools** menu.
- 2) Select **DB info** toolbar button.

Session information window appears. In this window, current database file name, file size, three TIDs are shown. All the session information taken for every connection is displayed in the list view.

The list view contains the following details.

- 1) Serial no.
- 2) Terminal ID.
- 3) User Name
- 4) Date and Time at which the connection established.
- 5) Record No (no of formulae dispensed when connection is established).
- 6) Message TID, RM TID and Formula TID at the time of connection.
- 7) Session Status showing whether the database is synchronized or not.

Clearing Logged Info:

The logged session information can be cleared by selecting **Clear Logged Info** from the **Tools** menu. This option will also delete the user logging information file logfile.txt stored in the MT-FormTool installation directory.

6. Report Generation

a. Reports – Introduction

Report Wizard provides a range of reports based on the data collected by MT-FormTool. The Wizard is used to generate graphical and text reports, based on the dispensed details for all the four applications of FormPac-XP.

The Wizard provides different types of analysis as follows:

Stored Formulation:

- Trend analysis
- Error analysis
- Consumption analysis
- Production analysis

Formulation:

Recipe and Component analysis

Pharma-Formulation & Totalizing:

Components analysis


The data can be displayed graphically in several modes namely Tables, Histograms, Pie Charts or Plots.

The **Advanced Reports** section can be used to generate customized reports. Using Advanced Reports, user can design a query based on database fields to produce required reports for all the FormPac-XP applications. For more details, see **Advanced Reports** section.

The Reports Application provides the following features:


- Print the generated report
- Customize styles (namely Fonts, Colors and Tags)
- Customize Header and Footer (allows to configure 1 line for header and 2 lines for footer)
- Save the generated report for future reference (saves as HTML file or Excel file).

b. Starting Wizard

- To invoke the report generation wizard, choose **Reports** from the Tools menu (or press Reports  toolbar button) in the MT-FormTool main window.
- The report generation tool appears with the option to choose the database file. By default, the current file that is opened by the MT-FormTool will be shown. Select this file or browse for an existing one and press OK button to continue.
- The **Report Generation Wizard** appears. The first page of the wizard is shown in the following figure.
- In the first page of the wizard, select the type of application. Choose any one of the following four applications in the wizard.
 - 1) Stored Formulation
 - 2) Formulation
 - 3) Pharma Formulation
 - 4) Totalizing

- Select the ID7 Terminal-Ids to which the reports have to be produced. See **Visualizing Multiple ID7 Terminal Reports** for more details.
- The reports can be generated based on the user name. Select the user names. See **Visualizing Reports for Multiple Users** for more details.

Note:

To invoke wizard manually, select **Wizard** from the Tools menu or press wizard  toolbar button.

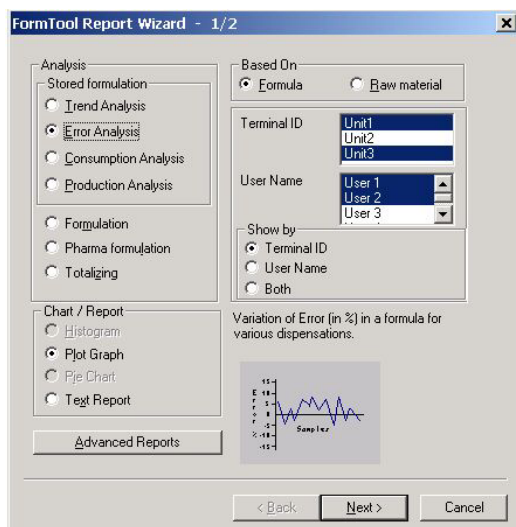
Back option

Once the report is generated and if any minor change has to be done in the current report, it can be easily done by using **Back** toolbar button. This option enables the user to go back to the previous interface from which the active report was generated. To make any change in the current report, follow the steps below.

1. Press the Back toolbar button in the reports window. The previous wizard/advanced reports window will appear.
2. Make the necessary changes and generate report again.

Pressing **Back** toolbar button will clear the current report and go back to the previous Wizard screen or Advanced reports window which ever is appropriate. This can also be done by choosing the menu option **Back** from the **View** menu.

Wizard screen is shown below.



c. Graph Options

The following graph options are available in the wizard.

Show batch results separately:

If this option is selected batch mode dispensing are shown separately. This option is available only for “Trend Analysis” and “Error Analysis”.

Show Grid:

If this option is enabled in Histogram or Plot graph, the report is shown in grid fashion. In text report if this option is enabled, the report is shown with rows and columns spanning the entire report.

d. Advanced Reports

Apart from the standard reports produced by the MT-FormTool's Reports Wizard, user can also generate customized reports using "Advanced Reports" feature.

Using **Advanced Reports**, user can design queries based on database fields to produce required reports for all the FormPac-XP applications.

In Stored Formulation, in addition to the dispensed details, the original Formula/Raw material/Message database details can also be analyzed. For example, listing all the formulae that use a specific Raw Material.

The major features of **Advanced Reports** are highlighted below:

- Constraints (conditions) can be used in queries to retrieve filtered data.
- During query designing, all the fields and their constraints (conditions) will be available in individual columns that can be selected by the user as required.
- The designed query can be saved and retrieved for future use. Any number of such queries can be designed and saved.

Back option


Once the report is generated and if any minor change has to be done in the current report, it can be easily done by using **Back** toolbar button. This option enables the user to go back to the previous interface from which the active report was generated. To make any change in the current report, follow the steps below.

1. Press the Back toolbar button in the reports window. The previous wizard/advanced reports window will appear.
2. Make the necessary changes and generate report again.

Pressing **Back** toolbar button will clear the current report and go back to the previous Wizard screen or Advanced reports window which ever is appropriate. This can also be done by choosing the menu option **Back** from the **View** menu.

e. Opening a Database file for Reports

Reports are generated for a database file. Before generating a report, a valid database file must be opened for which the reports shall be generated. By default, the wizard takes the currently running database to generate reports.

Otherwise any other database can be made open by selecting **Open** option from **File** menu or by pressing Open  toolbar button.

f. Visualizing Multiple ID7 Terminal Reports

Multiple Terminal-IDs:

MT-FormTool monitors multiple ID7 terminals and the data from all the ID7 terminals can be logged on to a single database file. Reports can be generated for more than one Id7 terminals.

Select the required terminals from **Terminal-ID** option list in the wizard's first page.

If multiple Terminal-IDs are selected, reports can be used to produce consolidated results or the same report can be used for displaying each Id7 terminal results in a distinct fashion. In such a case, a maximum of three ID7 terminals are shown in the produced report.

The option **Terminal-ID** in **Show by** section is allowed only in Error, Consumption and Production analysis of Stored Formulation application. This option is allowed for a maximum of 3 Terminal-IDs.

If this option (**Terminal-ID**) is selected, the resultant report will be shown as follows:

- Histogram Representation** : Shown as a 3D chart.
- Plot Representation** : Individual plots are used to represent each Terminal-Id.

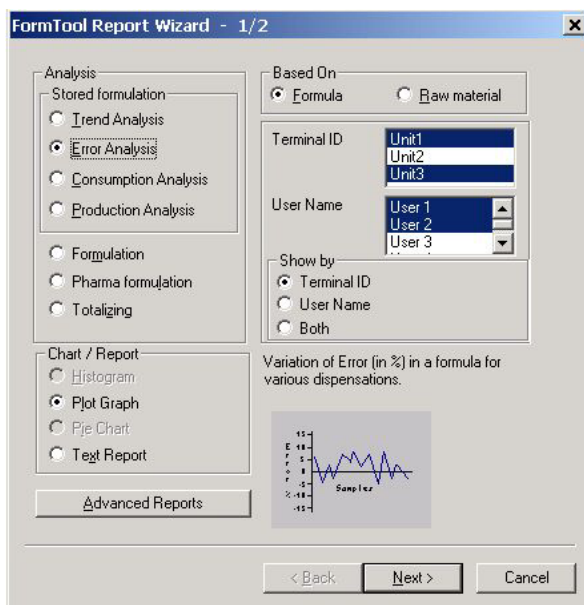
Otherwise, the report is shown as follows:

- Histogram Representation** : Shown as a 2D chart.
- Plot Representation** : Single line graph is shown.

Note:

Irrespective of multiple Terminal-IDs option, if the number of samples exceeds 15, then 3D charts cannot be accommodated. In this case, a 2D chart is displayed.

Wizard screen is shown below.



g. Visualizing Reports for Multiple Users

Multiple User Names:

MT-FormTool tracks the user name during dispensing. Reports can be generated for more than one user name. Required user names can be selected from the **User name** option list in the wizard's first page.

If multiple user names are selected, reports can be used to produce consolidated results or the same report can be used for displaying results for each user. In such a case, a maximum of three user names are shown in the produced report.

The option **User name** in **Show by** section is allowed only in Error, Consumption and Production analysis of Stored Formulation application. This option is allowed for a maximum of 3 user names.

If this option is selected, the resultant report will be shown as follows:

Histogram Representation : Shown as a 3D chart.
Plot Representation : Individual plots are used to represent each Terminal-Id.

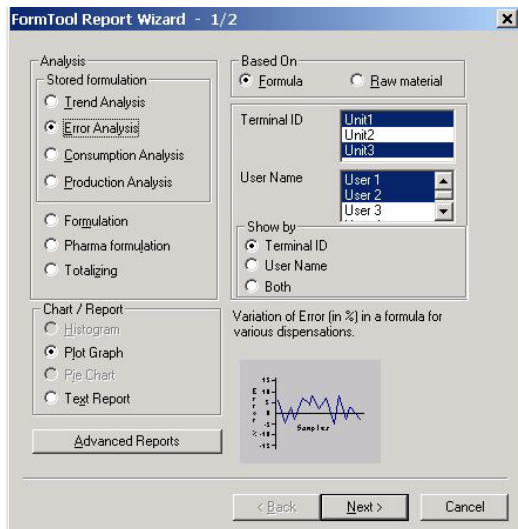
Otherwise, they are shown as follows:

Histogram Representation : Shown as a 2D chart.
Plot Representation : Single line graph is shown.

Note:

Irrespective of multiple user name option, if the number of samples exceeds 15, then 3D charts cannot be accommodated. In this case, a 2D chart is displayed.

Wizard screen is shown below.



h. Stored Formulation Reports

In Stored Formulation, reports can be used to view “Dispensing details of Formula / Raw Materials”, “Error in dispensing of Formula / Raw Materials”, “Usage of Raw Materials” and “Production of formulae”.

The report types are categorized as follows:

- 1) Trend Analysis
- 2) Error Analysis
- 3) Consumption Analysis
- 4) Production Analysis

Select any item to view details.

Trend analysis

Trend Analysis is used to analyze the target and dispensed weights of a formula or a compound (raw material) in a formula. To generate Trend Analysis report, follow the sequence of steps given below.

- In the **FormTool Report Wizard** screen, select the option **Trend Analysis**.
- In **Based On** section, select the option **Formula** or **Raw Material**.
- Select the required terminal-ids and user names from the **Terminal-ID** list and **User name** list respectively.
- In trend analysis, either Histogram/Text report can be produced. Select the desired chart in the **Chart/Report** section.
- Press the **Next** button. Second page of the wizard appears.
- If the analysis is selected **based on formula**, then a list of formula Ids is shown in the **Formula ID** drop-down list. Select a formula id from the list. The corresponding formula name is shown nearby.
- If the analysis is **based on raw material**, then a list of raw materials is shown in the **Raw Material Id** drop-down list. Select a raw material id from the list. The list of formulae that use this raw material will be listed below in the **Formula Id** drop-down list. Select any one formula id from the list. (A formula can use a raw material more than once. In this case, a list of duplicated compounds will be displayed, which can be selected).
- Select the further options **Date** range and **Graph Options**.
- After selecting the report options, press **Finish** button to generate the report.

The generated trend analysis report is shown.

Error analysis

The dispensed value of a raw material or formula may deviate from their target weights. In **Error Analysis**, the **percentage of error** during dispensing of each raw material or a complete formula can be analyzed. The graph shows the error values of each dispense operation. The **total deviation** of the samples is shown at the bottom of the graph.

To generate Error Analysis reports, follow the procedure given below.

- In the **FormTool Report Wizard** screen, select the option **Error Analysis**.
- In the **Based On** section, select the option **Formula** or **Raw Material**.
- Select the required terminal-ids and user names from the **Terminal-ID** list and **User name** list respectively.
- In Error Analysis, either **Plot/Text** report can be produced. Select the desired chart in the **Chart/Report** section.
- Press the **Next** button. Second page of the wizard appears.
- If the analysis is selected **based on formula**, then a list of formula Ids is shown in the **Formula ID** drop-down list. Select a formula id from the list. The corresponding formula name is shown nearby.
- If the analysis is **based on raw material**, then a list of raw materials is shown in the **Raw Material Id** drop-down list. Select a raw material id from the list. The list of formulae that use this raw material will be listed below in the **Formula Id** drop-down list. Select any one formula id from the list. (A formula can use a raw material more than once. In this case, a list of duplicated compounds will be displayed, which can be selected).
- Select the further options **Date** range and **Graph Options**.
- After selecting the report options, press the **Finish** button to generate the report.

The generated error analysis report is shown.

Consumption analysis

In consumption analysis, usage of raw materials is analyzed. This analysis focuses on stock management.

The following four reports can be generated in consumption analysis.

- 1) Total consumption
- 2) Date-wise report
- 3) Highly consumed
- 4) Least consumed

To generate the report, the procedure listed below can be followed.

- In the **FormTool Report Wizard** screen, select the option **Consumption Analysis**.
- Select the required terminal-ids and user names from the **Terminal-ID** list and **User name** list respectively.
- In Consumption Analysis, **Histogram**, **Pie Chart** or **Text** report can be produced. Select the desired chart in the **Chart/Report** section.
- Press the **Next** button. Second page of the wizard appears.
- Now, select the required report type listed below.

Total usage of raw materials: (Total consumption)

This report shows the usage of selected raw materials. To view this report, select the required raw materials from the list provided in **Choose Raw Materials** section.

Date-wise report for a raw material: (Date-wise report)

This report shows the usage of a raw material in the given date range. To view this report, select the required raw material from the list provided in **Choose Raw Materials** section.

Most used raw materials: (Highly consumed)

This report analyses highly used raw materials. The section **Top** can be used to specify the **top N highly used** raw materials.

Least used raw materials: (Least consumed)

This report analyses least used raw materials. The section **Top** can be used to specify the **top N least used** raw materials.

- Select the further options **Date** range and **Graph Options**.
 - After selecting the report options, press the **Finish** button to generate the report.
- The generated consumption analysis report is shown.

Production analysis

In production analysis, the production of formulae is analyzed. This analysis focuses on **production management**.

The following five reports can be generated in production analysis.

- 1) Total production of formulae
- 2) Dispensed, Cancelled and Parked count of each formula
- 3) Date-wise report for a formula
- 4) Highly consumed
- 5) Least consumed

To generate the report, follow the procedure listed below.

- In the **FormTool Report Wizard** screen, select the option **Production Analysis**.
- Select the required terminal-ids and user names from the **Terminal-ID** list and **User name** list respectively.

- In Production Analysis, **Histogram**, **Pie Chart** or **Text** report can be produced. Select the desired chart in the **Chart/Report** section.
- Press the **Next** button. Second page of the wizard appears.
- Now, select the required report type listed below.

Total production of formulae:

This report shows the production of selected formulae. To view this report, required formulae can be selected from the list provided in Choose formulae section.

Dispensed, Cancelled and Parked count of each formula:

This report shows the dispensed, cancelled and parked count of the selected formula. To view this report, select the required formula from the list provided in Choose formula section.

Date-wise report for a formula:

This report shows the production of a formula in the given date range. To view this report, select the required formula from the list provided in Choose formula section.

Highest volume produced: (Highly consumed)

This report analyses highly produced formulae. The section Top can be used to specify the top N highly produced formulae.

Least volume produced: (Least consumed)

This report analyses least used produced formulae. The section Top can be used to specify the top N least produced formulae.

- Select the further options **Date** range and **Graph Options**.
- After selecting the report options, press the **Finish** button to generate the report. The generated production analysis report is shown.

i. Formulation Reports

In Formulation, reports can be used to view **weight details of Recipe / Components**.

To generate the report, follow the procedure listed below.

- In the **FormTool Report Wizard** screen, select the option **Formulation**.
- In **Based On** section, select the option **Recipe** or **Components**.
- In Formulation analysis, **Histogram**, **Pie chart** or **Text** report can be generated. Select the desired chart in the **Chart/Report** section.
- Press the **Next** button. Second page of the wizard appears.
- If the analysis is **based on recipe**, the recipe range has to be selected. Specify the start and end range for the recipe. The selected recipe names between the given ranges are shown in the **selected name(s)** list for reference.
- If the analysis is **based on components**, select a recipe number. The corresponding recipe name is shown nearby. All the components of the selected recipe will be shown in the report.
- Select the further options **Date** range and **Graph Options**.
- After selecting the report options, press the **Finish** button to generate the report. The generated Formulation analysis report is shown.

j. Totalizing / Pharma Formulation Reports

In Formulation, reports can be used to view **weight details of Components**. The steps to generate report for Totalizing and Pharma Formulation are exactly the same.



To generate the report, the procedure listed below can be followed.

- In the **FormTool Report Wizard** screen, select the option **Pharma Formulation/Totalizing**.
- In Totalizing / Pharma Formulation analysis, **Histogram**, **Pie chart** or **Text** report can be generated. Select the desired chart in the **Chart/Report** section.
- Press the **Next** button. Second page of the wizard appears.
- Components can be selected using the index. Specify the start and end range for components. The selected component names between the given ranges are shown in the **Selected name(s)** list for reference.
- Select the further options **Date** range and **Graph Options**.
- After selecting the report options, press the **Finish** button to generate the report. The generated report is shown.

k. Individual queries with Advanced Reports

Queries can be designed manually and saved for future use.

To design a query, follow the steps below.

- Select **Advanced Reports** from the **View** menu or press  toolbar button. **Advanced Reports** screen will appear.
- If Advanced Reports screen is invoked for the first time (i.e. if no queries are created previously), a **New Query** dialog box will appear. Otherwise select **New Query**  button.
- In the **New Query** dialog box, select the query type from **Report type** drop-down (combo box) list. All query types are described below.
- Enter the **name** for the new query.
- Enter the **description** for the query (optional) and press **OK** button. Query description can be up to a maximum of 250 characters.

A new empty query will be created with the given name.

Depending on the report type selected, the field names listed in **Advanced Reports** screen will vary. In the **Advanced Reports** screen, individual columns are shown with database fields and its attributes/constraints (conditions). From these columns, the required fields and their constraints (conditions) can be selected to form a query. See title named **Query Design** for more details about designing a query.

Report type options and their descriptions are listed below:

1. **Stored Formulation: Standard:**
If this report type is chosen, reports for all the dispensed details in Vertical and Horizontal filling modes can be produced.
2. **Stored Formulation: Batch Dispensing**
Reports for batch-dispensed details can be analyzed in this report type.
3. **Stored Formulation: Formula Details**
This report type can be used to produce reports on original Formula details in Formula database.
4. **Stored Formulation: Raw Material Details**
This report type can be used to analyze Raw Material details in Raw Material database.

5. Stored Formulation: Messages

This report type can be used to produce reports analyzing Messages database.

6. Formulation

This report type can be used to produce the dispensed details of Formulation application.

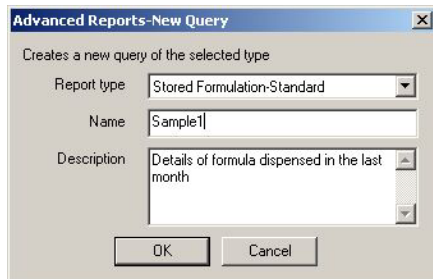
7. Pharma Formulation

This report type can be used to produce the dispensed details of Pharma-Formulation application.

8. Totalizing

This report type can be used to produce the dispensed details of Totalizing application.

New Query dialog box is shown below.



Query Design

In the **Advanced Reports** screen, each row can have a database field. The columns corresponding to a row represents the attributes and constraints (conditions) of that field.

From these columns, the required attributes and constraints (conditions) can be selected. In the **Advanced Reports** screen, clicking the left mouse button on each cell, allows to select the field items/values.

Field Selection:

In the **Advanced Reports** screen, the column with title **Field** contains a list of field names displayed in a tree structure.

Choose any field name in the tree structure and specify the required constraints (conditions).

Options 'Show', 'Column name' and 'Sort':

Option **Show** is used to enable or disable printing the corresponding field in the report. If this option is set ON, then the field is printed in report. (By default, all fields have the **Show** option set ON).

Option **Column name** is used for customizable printout of the field name. User can edit the field name as required. This name is used for printing. This text is editable only if **Show** option is set ON.

Option **Sort** is used to specify the order of arranging data in printout, whether in **ascending or descending** order. A maximum of two levels of ordering is allowed namely, **Primary** and **Secondary**.

Both levels can be used in a query. In such cases, the data are first ordered by the 'Primary' sort field and then by 'Secondary'.

Constraints:

Constraints (conditions) are used to filter the data.

When designing a query, data can be retrieved based on the user requirement, like retrieving all data matching a particular condition.

In a query one or more constraints can be used. The column **Operators** holds a list of relational operators (=, <>, <=, >=, <, >, *). Please refer section **Operators** for more details on field dependent details on operators.

An operator is used to relate (compare) the field value and the constraint.

Once an operator is selected from column **Operators**, the column **Constraint1** is enabled. Then the required constraint can be selected in that field. If the operator is not selected, no constraints can be added.

Adding more Constraints:

Multiple constraints can be used in a query. For example, two conditions like "target > 1 kg AND target < 5 kg" can be specified in a single query. By default two constraints were added.

To add more constraints in a query, right click the mouse on the index column in Advanced Reports screen and select **Add Constraint** from the pop-up menu.

The column **Condition** holds a list of connectors (AND, OR). Please refer section **Condition** for more details.

Deleting Constraints:

To delete a constraint, right click the mouse on the index column in Advanced Reports screen and select **Delete Constraints** from the pop-up menu. All the added constraints (numbered from 3 to 10) will be shown in another pop-up menu. Select any constraint to delete. The first two constraints cannot be deleted.

'Operators':

Operators are used to relate/compare a field value with a given value. The column **Operators** holds a list of relational operators, depending on the type of active field. The following table lists field-type dependent operators.


Field Type	Operators
Text	=, <>, *
Others	=, <>, <=, >=, <, >

'Condition':

Conditions are used to add multiple constraints. The column **Condition** holds two logical operators namely **AND** and **OR**. These conditions can be used to add more constraints to the query.

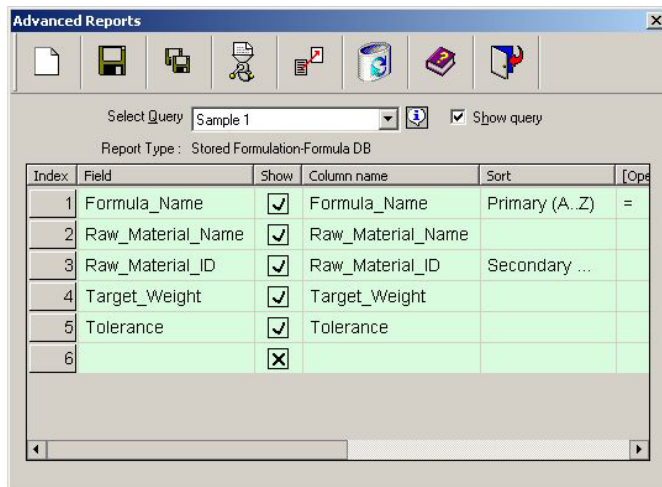
If multiple constraints are used in a query, then, the order of executing the query will be on priority basis. Two constraints connected by the **AND** operator is given more preference.

Running the Query

Finally after selecting the fields, the created query can be executed by clicking **Run**  button in the Advanced Reports screen. Before running the query, save the query. See title **Saving a Query** for more details.


The generated report for the designed query is displayed.

Advanced Reports window is shown below.




In Advanced Reports queries can be designed. Three examples for queries will be discussed on the following pages of this document.

Saving a Query

Once the query is designed it can be saved for future reference. By clicking the **Save**  button in the **Advanced Reports** screen, the query is saved.

Option 'Save As':

Option **Save As** is used to save the query with a different name.


- Press **Save As**  button.
 - Enter the new query name and description and press **OK** button.
- The query will be saved with the new name.

Deleting a Query

If any saved query is not needed, it can be deleted.


By clicking **Delete**  button in the Advanced Reports screen, the selected query will be deleted.



Clearing current query

Active query shown in the Advanced Reports screen can be cleared by clicking the **Clear**  button.


Customize Option

By default, **all the fields** related to the selected report type will be shown in the **Advanced Report** screen. User can eliminate some of these fields. In this case, the fields that are skipped by the user will not be available in the list of fields shown in **Field** column in **Advanced Reports** screen.

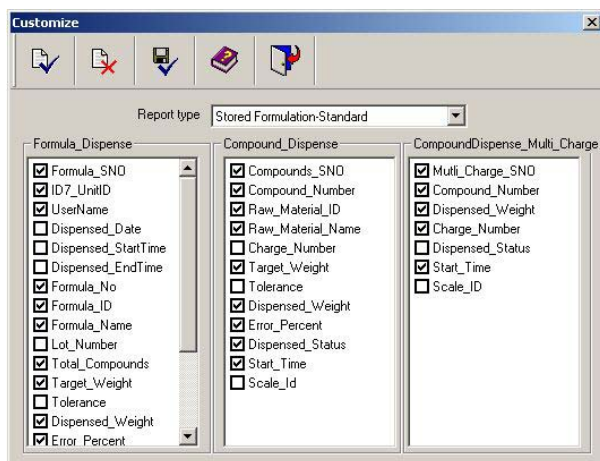
The option **Customize View** in **Settings** menu can be used to customize the tables. The Customize  toolbar button can also be used to customize the tables. This option will display the list of tables and their corresponding fields. In this screen, fields can be selected or deselected for the active report type. The primary key fields in tables cannot be deselected.

Select the report type from **Report type** drop-down (combo box) list. The corresponding tables will be displayed with their field names. Select or deselect the fields. Then pressing the  button saves the settings and closes the window. To exit without saving the settings press  button.

The button  selects all the fields in the currently opened tables.

The button  clears (deselects) all the fields (except primary key fields).

Customize dialog box is shown below.



Report Display/Printing

By default, all the selected fields will be displayed in the report. If some fields have the **Show** option set to OFF, then those fields will not be displayed.

By default, the constraint applied to fields will not be shown in the report. If the option **Show Constraints** in **Report Generator** screen is enabled, then only those fields that are having constraint(s) will be shown.

The report display screen size will be adjusted according to the size of the report.

Once the report is displayed, it can be printed. Before printing, the report can be pre-viewed by selecting **Print Preview** option in **File** menu.

Depending on Paper Size set in the **Print Setup** option in **File** menu, the report is printed in one or more pages.



Sample Queries

In Advanced Reports queries can be designed. Three sample queries are described below.

Sample 1

Query: Select all the compounds with a specified formula name

Steps:

- Open the database file by selecting **Open** from **File** menu. As soon as the file is opened, the Reports Wizard appears.
- Invoke the Advanced Reports window by clicking **Advanced Reports** button in the Wizard. Advanced Reports window will appear.
- Click the New  toolbar button. A **New Query** popup window will appear.
- In **Reports Type** drop-down list, select the **Stored Formulation - Formula DB**.
- Enter a name in the name edit box and its description.
- Click **Ok** button to save the query. Refer Fig 1.
- In the **Field** column of Advanced Reports window, select Formula Name, Raw_Material_Name, Raw_Material_ID, Target_Weight of Compound and Tolerance of Compound all in separate rows. Refer Fig 2.
- In **Formula Name** row select the '=' operator in operator column and in constraint1 column select the desired Formula Name. Refer Fig 3.
- Click the Run  toolbar button.

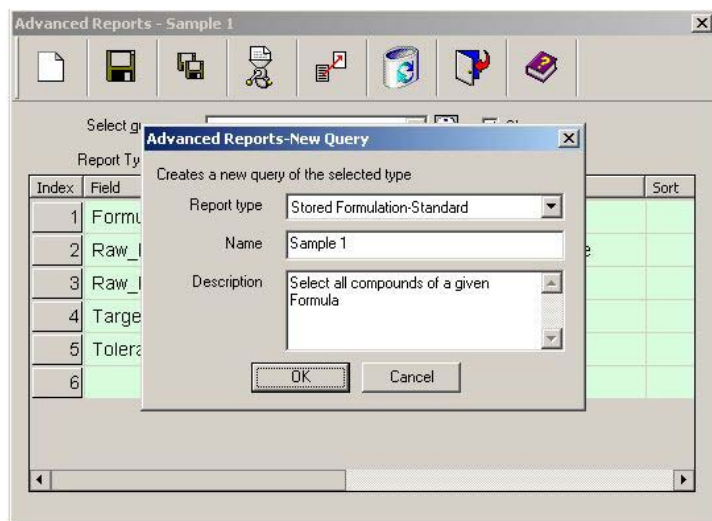


Figure 1

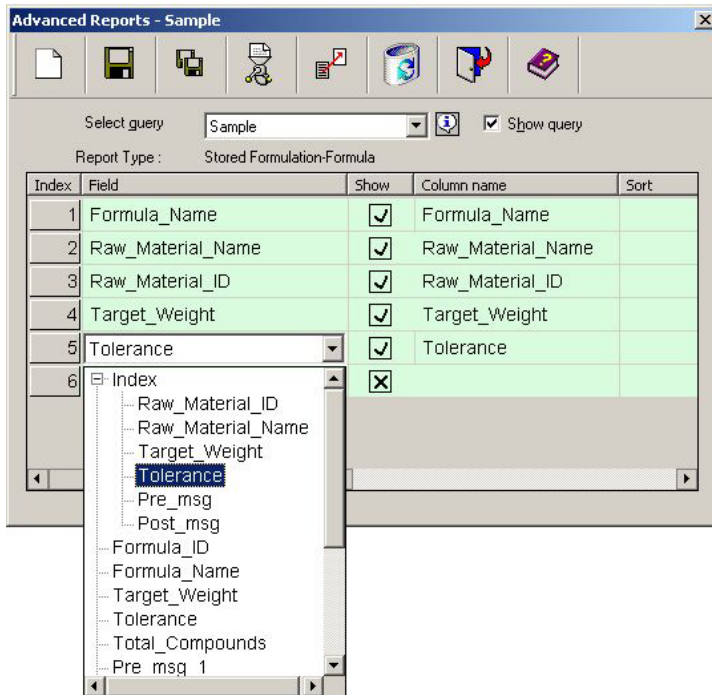


Figure 2

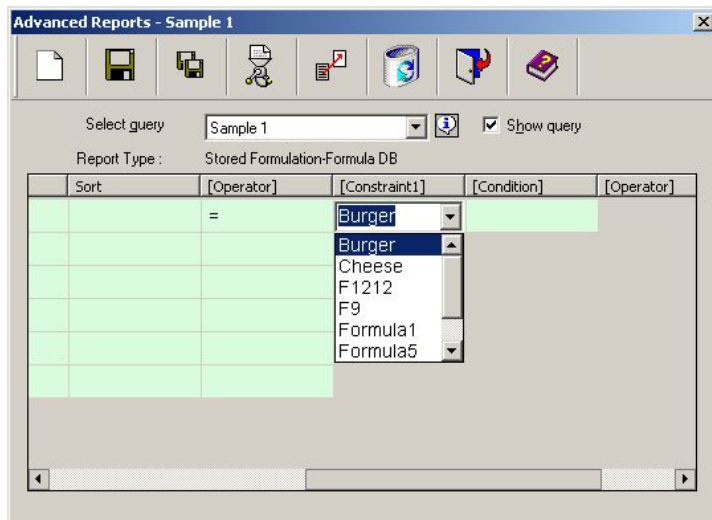




Figure 3

Sample 2

Query: Select all the compounds whose tolerance are < 5 % in a specified formula.

Steps:

- Open a database file by selecting **Open** from **File** menu. As soon as a file is opened, the Reports Wizard appears.
- Invoke the Advanced Reports window by clicking **Advanced Reports** button in the Wizard. Advanced Reports window will appear.
- Click the New  toolbar button. A **New Query** window will appear.

- In **Reports Type** drop-down list, select **Stored Formulation - Standard**.
- Enter a name in the name edit box and its description.
- Click **Ok** button to save the query. Refer Fig 1.
- In **Field** column of Advanced Reports screen select Formula_SNO, Formula_Name, Compound_Number, Raw_Material_Name, Raw_Material_ID, Target_Weight of compounds, Tolerance of compounds, Dispensed_Weight of compounds and Error_Percent of compounds all in separate rows. Refer Fig 2.
- In **Formula_Name** row select the '=' operator in operator column and in constraint1 column select the desired Formula Name. Refer Fig 2 and Fig3.
- In **Error_Percent** of Compounds row, select '<' operator in operator column and enter value '5' in constraint1 column.
- Click the Run  toolbar button.

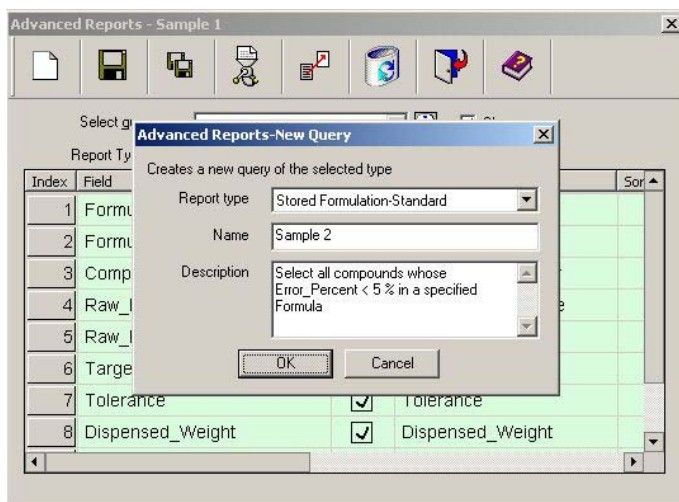


Figure 1

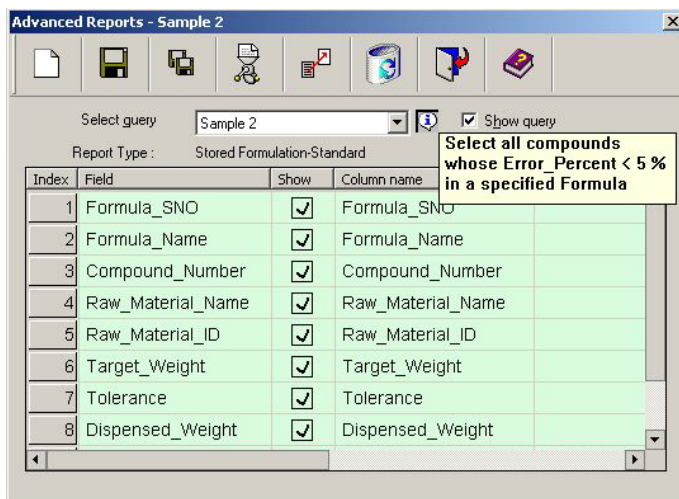


Figure 2

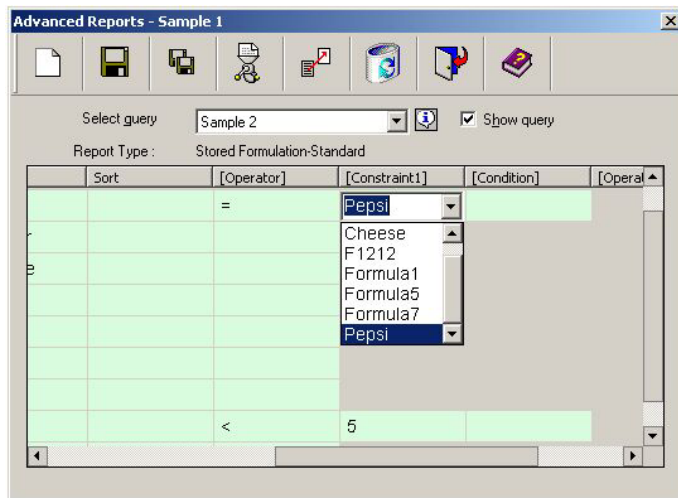




Figure 3

Sample 3

Query: Select all formula dispensed where the target weight < 700 g and dispensed tolerance < 5 AND > 0 and Dispensed_Date > 02/20/2002 and < 02/28/2002 which contain the certain compounds 'Water', 'Sugar' or 'Lemon' and lot number is not empty

Steps:

- Open a database file by selecting **Open** from **File** menu. As soon as a file is opened, the Reports Wizard appears.
- Invoke the Advanced Reports window by clicking **Advanced Reports** button in the Wizard. Advanced Reports window will appear.
- Click the New  toolbar button. A **New Query** window will appear.
- In **Reports Type** drop-down list, select **Stored Formulation - Standard**.
- Enter a name in the name edit box and its description.
- Click **Ok** button to save the query. Refer Fig 1.
- In **Field** column of Advanced Reports window, select the Formula_SNO, Formula_Name, Formula_ID, Target_Weight, Dispensed_Weight, Error_Percent, Lot_Number, Compound_Number and Raw_Material_Name all in separate rows.
- In **Raw_Material_Name** row, select the '=' operator in operator column and in constraint1 column select the **Water**, in condition column specify the **OR** operator, in operator column select '=' column and select the **Sugar** in Constraint2 column.
- Add a new constraint (refer Constraints in Query Design topic).
- In the new condition column specify the **OR** operator and select the **Lemon** in Constraint3 column.
- In **Error_Percent** of Formula row, select '<' operator in **operator** column and enter value '5' in **constraint1** column and in **condition** column specify AND operator and in operator column specify the '>' operator which is next to condition operator and in constraint2 column enter the value 0.
- In **Dispensed_Date** of Formula row, select '>' operator in operator column and enter value desired in constraint1 column and in condition column specify AND operator and in operator column specify the '<' operator which is next to condition operator and in constraint2 select the desired date.
- **In Lot_Number of Formula row, select '<>' operator in operator column and do not enter value in constraint1 column. Refer Fig 2 and Fig 3.**
- Click the Run  toolbar button.

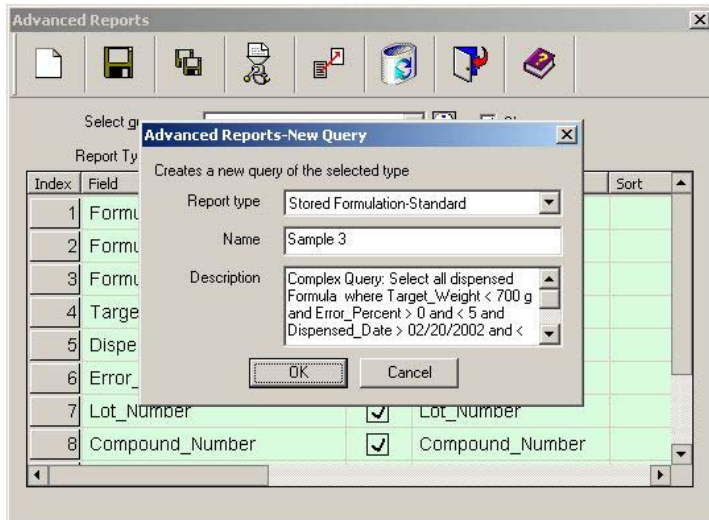


Figure 1

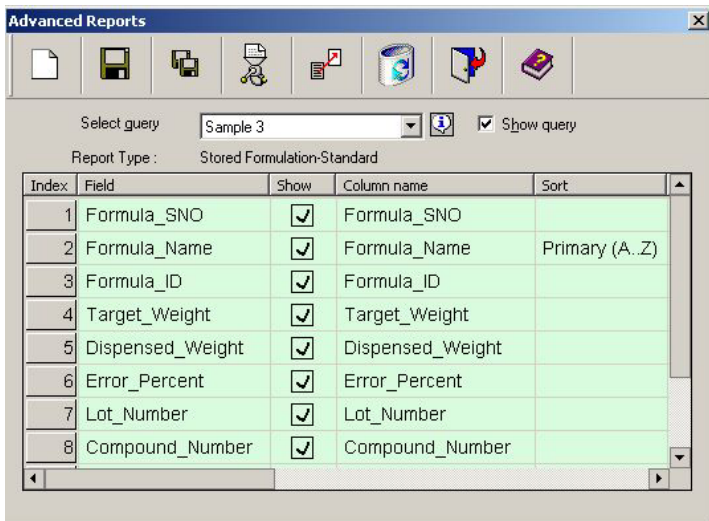


Figure 2

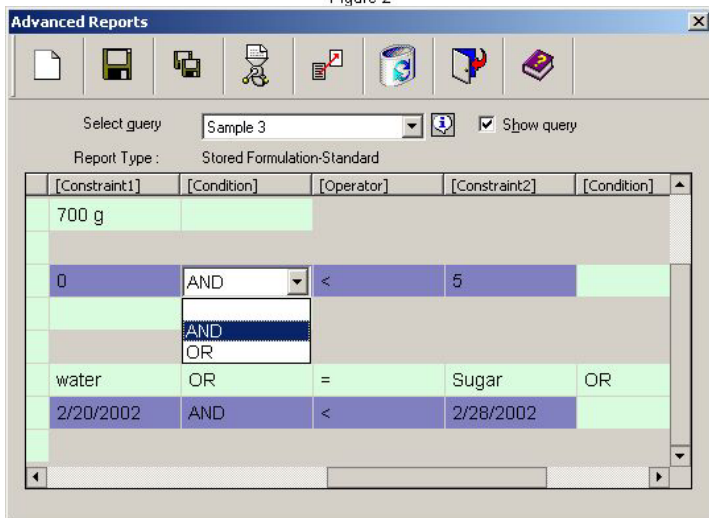



Figure 3

I. Saving Reports

Generated reports can be saved for future reference. It can be stored as a **HTML** file or an **Excel** file.

Saving as HTML file

Any type of report whether a graphical or text report can be saved as a HTML file.

Reports can be saved by selecting **Save as html** option from the **File** menu or by pressing  toolbar button.

For a Histogram, Plot Graph or a Pie Chart, a HTML file is created with a folder containing the report image. The image is created in **JPEG** format. The folder has its name “_files” added to the HTML file name and it is present in the same location as that of the file.

For a Text Report, only a HTML file is created in the specified location.

The HTML file can be customized by using templates. See **Using Templates** for more details.

Saving as Excel file

Text reports can be saved as an Excel file. Graphical reports can only be saved as HTML file.

Reports can be saved as Excel files by selecting **Save as xls** option from the **File** menu or by selecting  toolbar button.

m. Accelerator Keys

Accelerator keys are shortcuts for reports. Frequently used reports can be assigned to an Accelerator (Shortcut Key). These shortcut keys to reports are specific for a user. Thus, each user can generate and save shortcuts for reports based on his/her specific needs. Accelerator keys are displayed in both MT-FormTool and Reports main window. They can be shown/hidden by invoking the option **Accelerator Keys** option in **View** menu in MT-FormTool and Reports.

To generator the accelerator key, follow the steps below,

1. Start **Reports** from **Tools** menu.
2. Design and produce a report using Wizard or Advanced Reports.
3. Click any Accelerator key 1-6 in Reports window and select **Associate with current report**. Then the current report is stored and a message ‘Report is Stored’ is displayed.

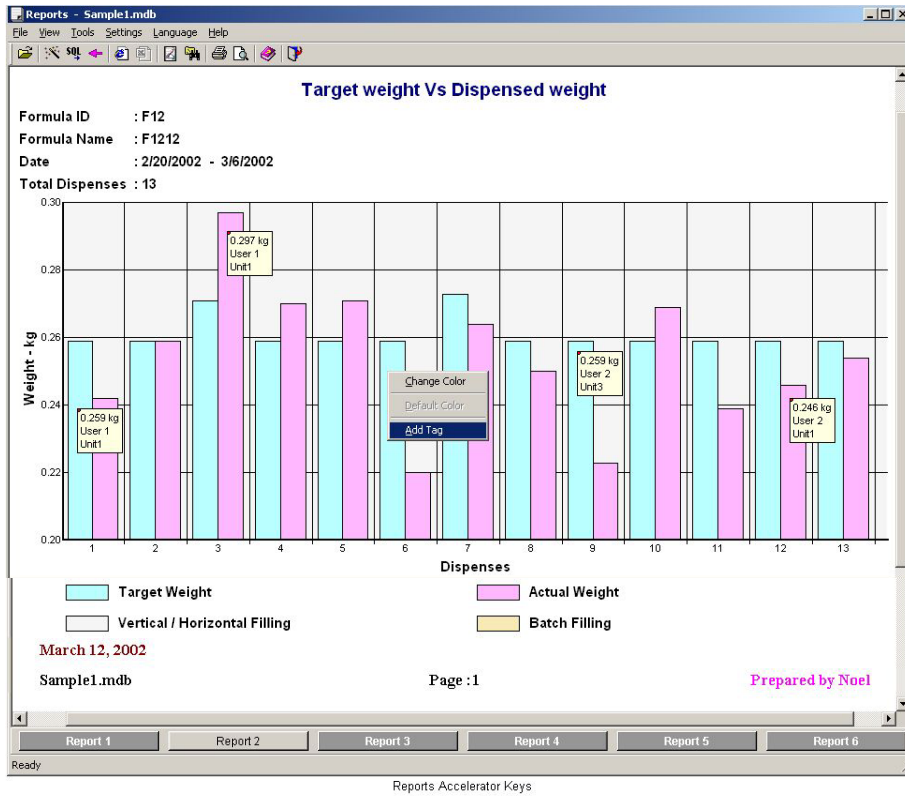
Note:

Reports are stored based on the current user logged on to MT-FormTool. All user classes have a maximum of six different accelerator keys.

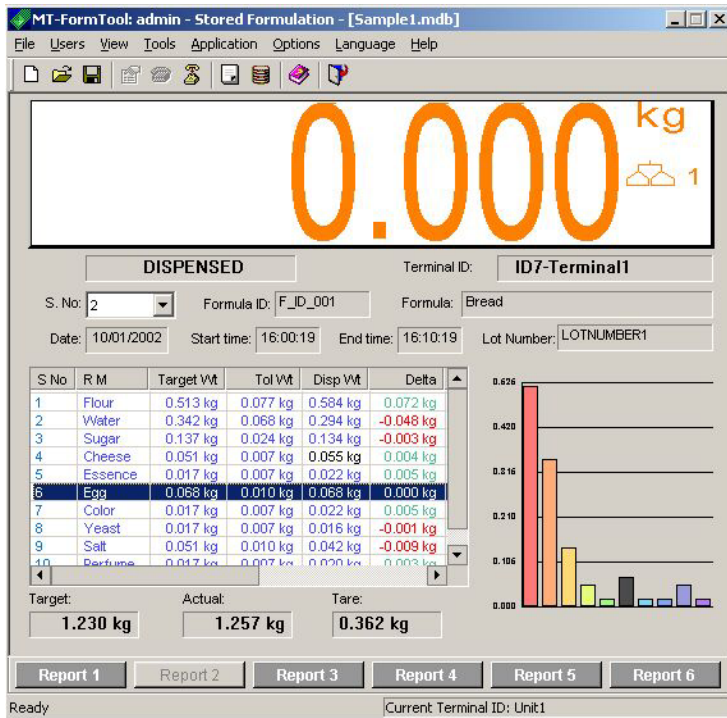
Invoking Accelerator Keys:

Accelerator keys can be invoked in both MT-FormTool and Reports windows. In MT-FormTool window clicking the Accelerator key containing the stored report will yield the same report in the reports window. In Reports, clicking the Accelerator key containing stored report and selecting the menu option **Execute Store Report** will produce the stored report.

FormToolXP – Operating Instructions



Accelerator Keys



Accelerator Keys

n. Using Templates

The Reports application uses a report template to structure and style reports. Report templates are HTML files with **Embedded Report Placeholders** for the report data. When a standard template (Normal.html) is used for saving a report, all the data like header, graph and footer are retained in the HTML file. By default Normal.html file is used.

Note:

When MT-FormTool is installed, three html files will be copied (used as templates) in the templates directory under the installation directory.

Custom Templates

A custom template is used when the content or style of the standard report needs to be changed. Using a custom template user can create a report, which may contain only a subset of information generated from a standard template or with required additional information like description.

Creating a Custom Template

Use a copy of the standard template (Normal.html) or any of the sample templates (Sample1.html or Sample2.html) as a starting point to create custom templates. Here Embedded Report Placeholders may be removed to exclude the corresponding report data and additional data such as description may be added to the custom template. This copy can be altered to create a new design at user's will.

Setting Custom Templates

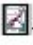
After a custom template is created the settings of the Reports Wizard should be changed to make it use the custom template instead of the standard template. This is done by selecting **Set Report Template** option from the **View** menu.

Sample Templates

Two sample templates Sample1.html and Sample2.html files are provided to aid creation/understanding of custom templates.

- Sample1.html adds a description to the report.
- Sample2.html adds a **logo** at the top right corner of the report. This logo can also be customized by replacing the "logo.jpg" file with some other logo having the same name. This file is present in the Templates directory.
-

o. Header / Footer Configuration

Header and Footer can be customized by choosing **Header and Footer** option from the **View** menu or by pressing  toolbar button. Also by right-clicking the header/footer area in the generated report and choosing the menu option will invoke the **Header and Footer** window.

The location has to be selected in the **Header and Footer** interface and desired option has to be clicked.

In **Header and Footer** window, select **Insert Auto Text**. A pop-up menu will be shown with the following options.

Title:

Each report has a title given by the application. This title is shown for this option.

File:

Reports are generated for a database file. The name of the database file is displayed for this option.

Page:

This option allows the user to know the page number of the report .It would be useful in the Text report because only this report produces multiple pages.

Date:

This is the current date. The system date is taken for this option.

Time:

This is the current time. The system time is taken for this option.

Custom:

If any other text other than the above options is required, this option can be used. Here a separate interface is provided to get the custom text. Custom text can be up to a maximum of 250 letters.

Clear:

This option can be used to clear the contents in the specified (selected) location.

The other options are,

Font:

This option allows the user to change the font of the text displayed for that particular location.

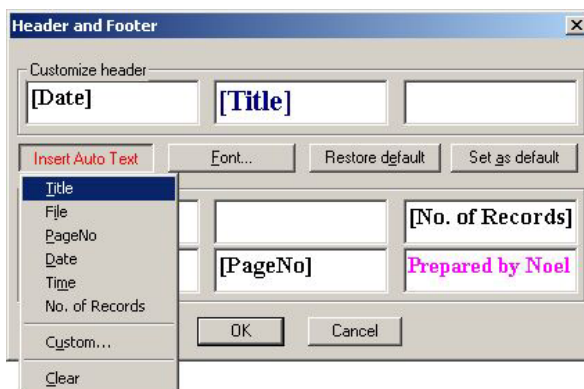
Restore default:

This option enables the user to restore the default header and footer settings if any.

Set as default:

This option sets the current header and footer configurations as the default setting.

The Header and Footer window is shown below.



p. Changing Fonts and Colors in Reports

In reports, the color of a bar (or a pie) and the background color of the graph area can be changed easily.

Changing the color of a bar/pie/plot:

To change the color, follow the steps below.

1. Right-click on the appropriate bar or pie or plot-circle area. A pop-up menu will be displayed.
2. From the menu, select the option **Change Color**.
3. Select the desired color from the interface.

After changing the color, the default color of bar, pie or plot-circle can be retained by selecting the option **Default Color** in the pop-up menu (Right clicking on the graph area will invoke a pop-up menu).

Changing the background color of the graph:

In Histogram and Plot graphs, the background area of the graph can be changed.

To change the background color, follow the steps below.

- Right-click on the graph's background area. A pop-up menu will be displayed.
- From the menu, select **Change Color** option.
- Select the desired color from the interface.

The background area of the graph is filled with the selected color.

After changing the background color, the default color can be retained by selecting the option **Default Color** from the pop-up menu, which is created by right clicking on the graph area.

Changing Fonts:

In reports, fonts of the displayed texts can be changed.

To change the font, follow the steps below.

- Right-click on the appropriate text area. A pop-up menu will be displayed.
- From the menu, select the **Change Font** option.
- Select the desired font from the interface.

The **Default Font** option from the pop-up menu is available for revert the changes.


q. Adding Tags

Tags act as a source of additional information for a graph. It can be easily added or removed from the graph.


In graph, by right clicking the mouse on a bar or pie or a plot-circle, a menu will be displayed with an option **Add Tag**. If this option is selected, a tag is added to the corresponding graph.

The tags can be removed from the graph. By right clicking the mouse on a tag-added bar or pie or plot-circle, a menu with the option **Remove Tag** is displayed. Select this option to remove the tag from the corresponding graph.

r. Printing Reports

The generated report can be taken as a printout. It can be done by selecting **Print** option from the **File** menu or by pressing Print  toolbar button.

The standard Print dialog box lets you choose which printer should be used, how many copies are printed, whether to print in landscape or portrait mode, etc.

The **Print Preview** option in the **File** menu shows the preview of the report. The toolbar button  can be used to preview the report.

s. Linear / Non-Linear Scales

Depending on the range of values, the histogram report can have linear or non-linear scale along y-axis.

In linear scale, each scale unit will be incremented with an absolute value.

In non-linear scale, each scale unit will be incremented proportionally, where scale is logarithmic.

t. Impact on modifying database

When the Stored Formulation (Formula, RM and Message) database is modified, it may affect the reports based on Stored Formulation. When the existing database has to be modified, it is advisable to create a new file and then make necessary changes and update the changes to ID7. The Stored Formulation database alone can be exported/Imported to/from external database files.

Reports may be affected and possibly incorrect when any of the following changes are made in Stored Formulation database:

- Modifying Formula name
- Modifying Raw material name
- Deleting formula
- Deleting raw material
- Altering formula compounds (Deleting, adding and modifying formula compounds)

Exporting Database:

Exporting database will copy the Stored Formulation tables to the given database file from the currently opened file. Save As option copies the entire set of tables including Transaction records, where as **Export** will copy only Stored Formulation tables- RM Table, MSG Table and Formula Table. You can open the newly exported file as any other database file.

The following procedure can be used to export database contents.

1. Open the existing database file where the formula / raw material details have to be changed.
2. Select **Export** from the File menu.
3. Enter NEW file name and press Save button. The DB Configuration contents will be exported to this file.

Importing Database:

Import database option will copy the Stored Formulation tables from the given database file to the currently opened file. For importing database, the corresponding tables in the current file should be empty. That is, a new set of Stored Formulation Tables cannot be imported into a Database file that has these tables established. The import operation is allowed only once – when a New Database File is opened (after File->New operation).

The following procedure can be used to create a new file with exported database contents.

1. Create a New Database File.
2. Select **Import** from the File menu and Import the saved DB Configurations.

3. The Stored Formulation tables will be imported from the existing database file to the new file.
4. Now change the database contents in the new file and download (or sync) this file to ID7 and start using this file.

Note:

When there are no dispensing details in the database file, you can change the database as you want because there are no dispensing details and therefore reports are not affected.

7. ID7 Display Panel

If MT-FormTool is connected with ID7, the ID7 display panel shows the current scale weight, scale unit and scale id. If the scale weight is dynamic, then the '~' symbol is shown instead of the scale unit.

Changing Foreground and Background Colors:

In the display panel, the foreground and background colors can be changed.

To change the color, follow the steps below.

- 1) Press the mouse right button on the display panel. A menu appears with **BackColor** and **ForeColor** options.
- 2) Select any one option. The color dialog box will appear.
- 3) Choose the desired color and press **OK** button.

The display shows the corresponding background color and foreground color. When the application is not connected with ID7, you may not be able to see the foreground color since there is nothing to display.

Hide/Show Panel

The ID7 display can be made hide/visible by selecting **Panel** option from the **View** menu.

8. Multi-Lingual support

MT-FormTool application supports multi-lingual feature.

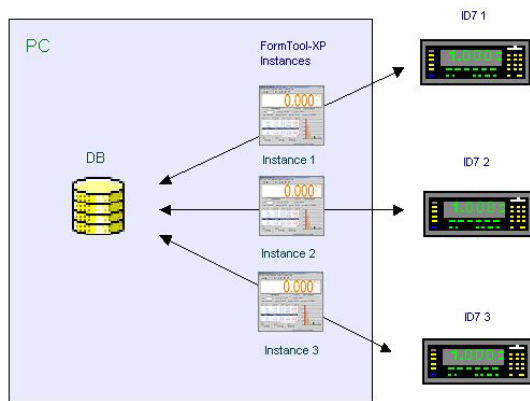
It provides six languages that are listed below:

- 1) German
- 2) English
- 3) French
- 4) Dutch
- 5) Italian
- 6) Spanish

To change the language, select any one of the available six languages from the **Language** menu. The application will show all the texts (including menu items) in the selected language. The current language is shown with a tick symbol in the Language menu. When the application starts the next time, all the texts will be shown in the selected language.

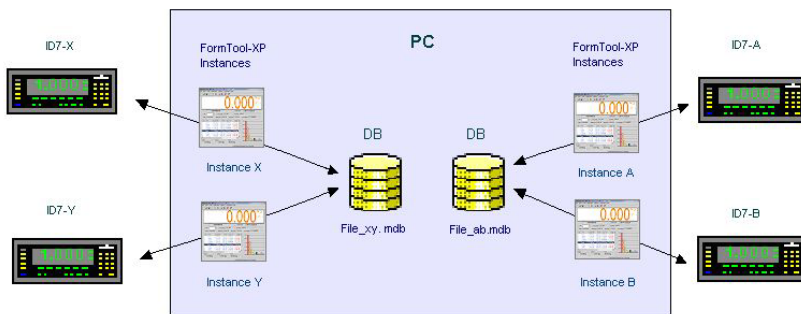
9. Managing Sessions

Multiple instances of MT-FormTool can manage multiple ID7 terminals. All the data collected by these instances can be logged on to a single or multiple database files. The following diagram (Figure-1) shows the multiple instances running and all the data collected are logged on to a single database file.



Ziffer-1

The above diagram (Figure-1) has three instances of MT-FormTool connected with three FormPac ID7 terminals and all the data collected by these three instances are logged on to a single database file. Here single database file manages all the data of three ID7 terminals.



Ziffer-2

The above diagram (Figure-2) has four instances of MT-FormTool connected to four FormPac ID7 terminals. Data collected by the instances A & B is logged on to the File_ab.mdb and data collected by instances X & Y are logged on to the File_xy.mdb. Here two different database files manage the four ID7 terminals.

10. Updating Stock

MT-FormTool maintains the stock values for the raw materials if the **Track Inventory** option is enabled. This feature is useful when multiple FormPac-XP units are tracked on the same system using a single database file. Whenever a compound is dispensed, its stock value is updated within the ID7 and also in the database (.mdb file) maintained in the PC. In case of multiple ID7s using the same store, the stock value maintained by the FormPac-XP on ID7 may not be correct as they do not account for the usage of raw-materials by other FormPacXP units. Therefore it is necessary to correct the stocks on ID7 periodically with the correct value tracked by FormTool.

To update the stock values on FormPac-XP from the values tracked by FormTool, click the **Stock** toolbar button in DB Configuration window. Select **Update Stock** from the pop-up menu. A confirmation message will be displayed. And if the TIDs (Table Ids) of the current database are not the same as TIDs in ID7, then a warning message will be issued.

If **Enable Store** option is enabled (via **Inventory Control** option from the **View** menu), then stock values will be taken from the corresponding store. Otherwise stocks will be taken from the raw materials database.

Note:

The stock value is updated locally in the database file only if **Track Inventory** option is enabled. To enable Track Inventory, select **Inventory Control** from the **View** menu. From the Inventory Control dialog box, check the **Track Inventory** option.

11. Inventory Control

Inventory control tracks stocks in all the ID7 terminals associated with the current database file. Stocks of ID7 terminals can be managed individually, or in groups, or ignored. Inventory is managed by the **Inventory Control** window, which can be selected from the **View** menu.

Inventory Control Window:

Inventory control has **Track Inventory option**. Multi Stores or Groups can be managed by activating 'Enable Stores' option under this control.

Inventory tracking:

Track Inventory and Enable Stores options:

- 1) If '**Track inventory**' option is **disabled**, then stocks of Raw Materials are not updated on dispensing. They are ignored.
- 2) If '**Track inventory**' option is **enabled** and '**Enable Stores**' option is **not enabled**, then all the ID7 terminals belonging to the current database file are considered as a single group and the stocks values of the Raw Materials are updated during dispensing as the raw-materials are consumed. If the original stock levels are incorrect, it is possible that the inventory values become zero or even negative when the raw materials are consumed during formulation
- 3) If '**Track inventory**' option is **enabled** and '**Enable Stores**' option is also **enabled**, then Stocks of Raw Materials can be managed in Stores (groups otherwise). Stores are nothing but a group of ID7 terminals. There can be up to 10 Stores within a database file and each store can have up to 10 ID7 terminals. So stocks of 100 ID7 terminals can be managed from a single database file.

Store Details

Details of the stores can be viewed in table below the **Store Details** text in inventory control window. The table shows the list of ID7 terminals and their assigned stores. Each ID7 terminal can be assigned to any available store by simply clicking the required store cell in **Store Column** and selecting the desired Store from the list of stores. New stores can be added by clicking **Add Store** button and by entering the name of the store (Store name cannot contain spaces, instead of spaces underscore or other characters can be used). The newly added store is available in Stores list of the Stores column.

Connection Details

When **Track Inventory** and **Enable Stores** options are enabled, then on connecting with ID7 terminal, Terminal Id of ID7 is read and checked the list maintained for each store in the database file. If the ID7 terminal does not belong to any of the stores or if there are no stores in database file, then **Assign Store** window is prompted.

Assign Store window can be used to assign the currently connected ID7 terminal to any one of the available stores or to a new store.

- The list of available stores is shown in the Assign Store list
- New store can be created by clicking the **New Store** button and by entering the name of the new store (Store name cannot contain spaces).
- Select the store name from the list.
- If you don't want to assign a store for the connected terminal, just select the **empty store name** available in the list.
- Press **OK** button.

Now the selected store will be assigned to the connected ID7 terminal. If **Cancel** button is pressed, no store will be assigned. Later, stores can be altered by choosing **Inventory Control** from the **View** menu.



Inventory Control

Editing Current Store

DB Configuration window shows the store as stock. If the MT-FormTool is connected to an ID7 terminal and if **Enable Stores** option is enabled, then Raw Materials table in DB Configuration window shows the Store (Stock) values (in the stock column) that the current ID7 terminal belongs to.

Updating Stock (for current store)

Updating stock to ID7 is writing stock details of Raw Materials from the MT-FormTool to ID7 terminal. Stock values for the current store can be updated by clicking the **Stock** toolbar button in DB Configuration window and selecting the **Update Stock** option from the pop-up menu. The stock values are updated accordingly.

Editing All Stores

All the stores in database file viewed together. To view all the stores click '**Stock**' button and select the 'View all stores' option form the menu in DB Configuration window. All the stores are shown and each of the stores can be edited individually but Raw material id and its name are not allowed to change. Raw materials can be viewed again by clicking '**Stock**' button and deselecting the 'View all stores' menu option.

Other cases:

No Connection and Track Inventory and Enable Stores are enabled

If there is no connection with ID7 terminal, 'Track Inventory' and 'Enable Stores' options are enabled, then store shown in Raw Materials table of DB Configuration window will be empty, since the MT-FormTool does not know which available store to show. So stock value cannot be updated in Raw Materials table. However the stock value can be updated using the option '**View all Stores**' in **Stock** button. **So on a disconnected status and the above options are enabled, use the 'View all Stores' option to change the stock value.**

Note:

Inventory control doesn't keep track of consumed quantity in Raw Materials table. It reflects the quantity last read from ID7.

12. User Management

User management determines the level of access to the MT-FormTool. User management prevents users from making careless mistakes. There are 3 different types of users namely Administrator, Supervisor and Operator. The access rights for the users are shown in the following table.

	View DB/ Logging	DB Creation/ Open/Save	Edit DB	Download/ Upload	View Reports	Inventory Control	User Management
Operator	Yes	No	No	Yes	Yes	No	No
Supervisor	Yes	Yes	Yes	Yes	Yes	Yes	No
Admin	Yes	Yes	Yes	Yes	Yes	Yes	Yes

The administrator manages users.

To add new user, follow the steps below

1. Select **User Settings** in the **User** menu. The User Settings dialog appears.
2. Click the **Add** button.
3. Enter the user name and access privilege. (Only Supervisor and Operator privilege can be set)
4. The administrator can view the user rights by clicking the **View Rights** button.
5. Click the **OK** button

To set password to a user follow the steps below

1. Select **User Settings** in the **User** menu. The User Settings dialog appears.
2. Select the user in user name table and click the **Set Password** button.
3. Enter new password and confirm the new password in the pop up window. (Old password is not needed)
4. Click the **Done** button to update the changes

Only the administrator can change the password for other users. All the other users are allowed to change their own password alone. If the administrator changes his/her own password then old password is prompted. The user name is 30 characters and password size is 10 characters.

The administrator can add/modify/delete the users. Deleting the user deletes the user with all the accelerator key reports for that user. The administrator can modify the access privilege for the other users. The administrator name cannot be changed. There can be 1 administrator, 2 supervisors and 5 operators for a PC.

When Login dialog displayed:

When the MT-FormTool is installed, there will be only one user (that is admin) and no password is set for admin. In this case, login dialog won't be displayed. In this case, the user name will be taken as admin. When the admin changes the password or if more users are added, then login dialog will be displayed every time the application starts.

How to logon:

The current login name will be displayed in the window title along with the application name (If no user name is displayed, then it means no user has logged in).

1. Select **Logon** option from **Users** menu. Login dialog will be displayed.
2. Enter the user name and password. If successfully logged in, then current login name will be shown in the window title.

How to logoff:

Select **Logoff** from **Users** menu. If the user is logged off, the MT-FormTool will be disconnected from ID7 and it will try to close the reports window if any opened.

Note:


User logging information is stored in the file 'logfile.txt' in the MT-FormTool installation directory. The option **Clear logged Info** in the **Tools** menu will delete this file and the connection status (Session Information) in the database file.

13. Error messages


The following are the possible error messages shown by MT-FormTool and the description of the error message.

Communication Error Messages

Connection failed



The specified PC port may be connected with other application. Verify the PC port with which ID7 is connected and change the PC port number by selecting **Interface Settings** from the **Options** menu or pressing Settings  toolbar button. Then connect again by selecting **Connect** from the File menu.

Cannot establish connection with the system

The specified IP address is not correct or the Ethernet port number is not correct. Verify the **Ethernet IP address** and **Ethernet port number** in ID7 and change the Ethernet settings by selecting **Interface Settings** from the **Options** menu or press Settings  toolbar button.

No response from ID7

If the COM-Port (PC Port) settings are wrong or if the ID7 terminal is not connected with PC, this error message is shown.

Make sure that the ID7 terminal is connected with the PC and it is switched on. Verify the interface settings both in ID7 and in MT-FormTool. Change the interface settings (baud rate, data bits, parity, stop bits and Frame String [CR, LF, STX_ETX and CheckSum] options) so that interface settings are same both in ID7 and in MT-FormTool. Now select **Disconnect**  from the **File** menu and select **Connect**  to connect again.

BasePac/FormPac version error

If the Pac (bin) version in ID7 is not compatible with the MT-FormTool, this error message is shown. MT-FormTool is designed for FormPac-XP Version 2.08. Download the correct Pac (bin) and connect with MT-FormTool again.

At sometimes due to some communication problems, this error message is shown. In those cases just disconnect and connect with ID7 again. If the same error message is repeated, then try changing the PAC in ID7.

The unit is already monitored by the MT-FormTool

If an ID7 terminal is connected by the MT-FormTool and if another instance of MT-FormTool is trying to connect with the same ID7 terminal, this message will be shown. Multiple instances of MT-FormTool cannot monitor the same ID7 terminal.

File Error Messages

Unable to open the file. The file may be corrupted or invalid.

If the file is not created by the tool or if the database file format is different, then this error message is shown. Open a valid database (.mdb) file or create a new database file by selecting **New** from **File** menu.

Error occurred while saving

If the given file in the Save As dialog box already exists and is used by some other application, this error message is shown. Either close the other application that uses the file or give a different name and save again.

Error occurred while creating new file

If the file name entered in the 'New' dialog box already exists and if it is used by some other application, then the tool cannot create a file with the same name. Enter some other name or close the other application that uses the file.

14. Database Structure

The tables used in MT-FormTool are categorized into five groups as shown below. The database schema structure for each of the following table is explained with all field details. Select the category to view its table structure.

- DB Configuration Tables
- Stored Formulation Dispensing Tables
- Formulation Tables
- Pharma Formulation Tables
- Totalizing Tables

The relationships between the tables are shown below.

- 1) Relationship between Stored Formulation Dispensing tables
- 2) Relationship between Stored Formulation Batch-Dispensing tables
- 3) Relationship between Formulation Application tables
- 4) Relationship between Formula and Formula-Trailer tables (used in DB Configuration)

a. DB configuration Tables

In this section, tables related to DB Configuration database are listed. There are four tables in this section. They are listed below.

- 1) Formula
- 2) Formula_Compounds
- 3) Raw_Materials
- 4) Messages

Schema structure for Formula table:

Table name: Formula

No	Field Name	Type	Size	Comments
1	Index	Long	4	Auto increment number
2	Formula_ID	Text	11	Formula ID (Unique)
3	Formula_Name	Text	31	Formula Name
4	Target_Weight	Text	15	Formula Target (designed) Weight
5	Tolerance	Integer	4	Formula Tolerance: Addition of compound tolerances.
6	Total_Compounds	Integer	4	Total no of compounds for a formula.
7	Pre_msg_1	Integer	4	Pre Message-1
8	Pre_msg_2	Integer	4	Pre Message-2
9	Pre_msg_3	Integer	4	Pre Message-3
10	Post_msg_1	Integer	4	Post Message-1
11	Post_msg_2	Integer	4	Post Message-2
12	Total_Dispensed_Weight	Text	16	Total dispensed weight
13	Total_Cleared_Date	Date/Time	8	Total Cleared Date: Date at which formula total is cleared.
14	Total_Cleared_Time	Date/Time	8	Total Cleared Time: Time ate at which formula total is cleared.
15	Status	Integer	4	Formula status in ID7 can be either Edit mode or Complete mode or Invalid. (not used generally)
16	Valid	Integer	4	For internal use.
17	Edit_Status	Integer	4	For internal use.

Schema structure for Formula table:**Table name: Formula Compounds**

No	Field Name	Type	Size	Comments
1	Formula_ID	Text	30	For internal use
2	Raw_Material_ID	Text	21	Raw Material ID
3	Raw_Material_Name	Text	31	Raw Material (Compound) Name
4	Target_Weight	Text	15	Compound target weight
5	Tolerance	Integer	4	Compound Tolerance weight
6	Pre_msg	Integer	4	Pre Message
7	Post_msg	Integer	4	Post Message
8	Id	Integer	4	Foreign key from Formula table
9	Edit_Status	Integer	4	For internal use

Schema structure for Raw Materials table:**Table name: Raw Materials**

No	Field Name	Type	Size	Comments
1	Index	Integer	4	Auto increment number
2	Raw_Material_ID	Text	21	Raw Material Id
3	Description	Text	31	Raw Material Name
4	Stock	Text	15	Raw Material stock
5	Warning	Integer	4	Warning
6	Msg_NO	Integer	4	Message No
7	Used_Count	Integer	4	Raw Material Used Count
8	Consumed	Text	15	Raw material consumed
9	Stock_Date	Date/Time	8	Stock updated date
10	Stock_Time	Date/Time	8	Stock updated time
11	Edit_Status	Integer	4	For internal use

Schema structure for Messages table:**Table name: Messages**

No	Field Name	Type	Size	Comments
1	Index	Integer	4	Auto increment number
2	Description	Text	30	Message text
3	Edit_Status	Integer	4	For internal use

b. Stored Formulation Dispensing Tables

In this section, tables related to dispensing section of stored formulation are listed. There are five tables in this section. They are listed below.

- 1) Formula_Dispense
- 2) Compound_Dispense
- 3) CompoundDispense_Multi_Charge
- 4) CompoundDispense_Batch
- 5) CompoundDispense_BatchDetails

Stored Formulation Dispensed Formula Details Header**Table Name: Formula Dispense**

No	Field Name	Type	Size	Comments
1	Formula_SNO	Long	4	Auto increment number
2	ID7_UnitID	Text	21	Terminal ID from ID7
3	UserName	Text	20	User name
4	Dispensed_Date	Date/Time	8	PC- Date: Dispensed start date
5	Dispensed_StartTime	Date/Time	8	Dispensed Start Time: Start of formulation
6	Dispensed_EndTime	Date/Time	8	Dispensed End Time: End time when formulation is done
7	Formula_No	Integer	2	Formula number
8	Formula_ID	Text	11	Formula ID varies from [1-150]
9	Formula_Name	Text	31	Formula name
10	Lot_Number	Text	21	Lot Number: Optional - user entry at ID7
11	Total_Compounds	Integer	2	Number of compounds in a formula varies from [1-100]
12	Target_Weight	Text	15	Ideal target of formula
13	Tolerance	Float	4	Tolerance weight +/- limits
14	Dispensed_Weight	Text	15	Total dispensed weight of compounds
15	Error_Percent	Float	4	Dispensed Tolerance weight percentage. Deviation from Target (+/-)
16	Tare_Weight	Text	15	Tare Weight
17	Total_Batches	Integer	2	Number of batches for a formula
18	Formula_Status	Integer	2	Formula Dispensed status (Dispensed, parked, cancelled or interrupted)
19	Flag_Byte	Text	101	For internal use
20	Split_Count	Text	101	For internal use
21	Code_C_Key	Text	31	C key read from ID7
22	Code_D_Key	Text	31	D key read from ID7

Stored Formulation Components Details Trailer**Table Name: Compound Dispense**

No	Field Name	Type	Size	Comments
1	Compounds_SNO	Long	4	Auto increment number
2	Compound_Number	Integer	2	Compound number varies from (1-100)
3	Formula_SNO	Long	4	Foreign key from formula table
4	Raw_Material_ID	Text	21	Raw Material ID (Unique)
5	Raw_Material_Name	Text	31	Raw Material Name
6	Charge_Number	Text	21	Charge Number: Optional-user entry at ID7
7	Target_Weight	Text	15	Ideal weight of the compound
8	Tolerance	Float	4	compound Tolerance Wt +/- Limits
9	Dispensed_Weight	Text	15	Dispensed weight of the compound
10	Error_Percent	Float	4	Dispensed tolerance: Deviation from Ideal Target weight
11	Dispensed_Tolerance2	Float	4	Dispensed Tolerance2
12	Dispensed_Status	Byte	1	Compound dispensed status: Shows whether compound was dispensed manually or through scale
13	Start_Time	Date/Time	8	PC-Time: Dispensing start time of the compound
14	Scale_Id	Integer	2	Scale Id: Shows in which scale the compound was dispensed

Compound Dispense Split table

Table Name: CompoundDispense Mutli Charge

No	Field Name	Type	Size	Comments
1	Mutli_Charge_SNO	Long	4	Auto Increment Number
2	Compound_Number	Integer	2	Compound Number
3	Compounds_SNO	Long	4	Foreign key from CompoundDispense table
4	Dispensed_Weight	Text	15	Split dispense weight
5	Charge_Number	Text	21	Split charge number
6	Dispensed_Status	Text	1	Shows whether compound dispensed manually or through scale
7	Start_Time	Date/Time	8	Start time of dispensing
8	Scale_ID	Integer	2	Scale Id: Shows in which scale the compound was dispensed

Stored Formulation Batch Details Trailer

Table Name: CompoundDispense Batch

No	Field Name	Type	Size	Comments
1	Batch_SNO	Long	4	Auto Increment Number
2	Compound_Number	Integer	2	Compound Number [1-100]
3	Formula_SNO	Long	4	Foreign key from formula table
4	Raw_Material_ID	Text	21	Raw Material ID
5	Raw_Material_Name	Text	31	Raw Material Name
6	Charge_Number	Text	21	Charge Number: Optional user entry at ID7
7	Target_Weight	Text	15	Ideal weight of the compound (Target Wt)
8	Tolerance	Float	4	Compound Tolerance Wt +/- Limits

Stored Formulation Batch Weight Details:

Table Name: CompoundDispense BatchDetails

No	Field Name	Type	Size	Comments
1	BatchDetails_SNO	Long	4	Auto Increment Number
2	Batch_SNO	Long	4	Foreign key for formula table
3	Dispensed_Weight	Text	15	Compound dispensed weight
4	Error_Percent	Float	4	Dispensed Tolerance: Deviation from Ideal Target weight
5	Dispensed_Tolerance2	Float	4	Dispensed Tolerance2
6	Tare_Weight	Text	15	Container weight
7	Batch_ID	Text	21	Batch Id of current batch
8	Start_Time	Date/Time	8	Dispensing start time of compound
9	Scale_Id	Byte	1	Scale Id: Shows in which scale the compound was dispensed
10	Batch_No	Integer	2	Iteration number [1-100]

c. Formulation Tables

In Formulation application, two tables are used. They are listed below.

- 1) Formulation_Container
- 2) Formulation_Compounds

Schema structure for Formulation Container table:

Table name: Formulation Container

No	Field Name	Type	Size	Comments
1	Container_SNO	Integer	4	Auto increment number
2	Recipe_Name	Text	31	Recipe Name
3	Container_Weight	Text	15	Container weight
4	Tare_Weight	Text	15	Tare weight
5	Dispensed_Date	Date/Time	8	Dispensed Start Date
6	Dispensed_StartTime	Date/Time	8	Dispensed Start Time: Time when container is loaded
7	Dispensed_EndTime	Date/Time	8	Dispensed End Time: End time when container is closed
8	Code_B_Key	Text	31	B key read from ID7
9	Code_D_key	Text	31	D key read from ID7

Schema structure for Formulation Compounds table:

Table name: Formulation Compounds

No	Field Name	Type	Size	Comments
1	Container_SNO	Integer	4	
2	Compound_No	Integer	4	Component number varies from [1-15]
3	Compound_Name	Text	21	Component name
4	Compound_Weight	Text	15	Component weight
5	Dispensed_StartTime	Date/Time	8	Dispensed Start Time for compound
6	Dispensed_Status	Integer	4	Component dispensed status: Shows whether component was dispensed manually or through scale
7	Scale_ID	Integer	4	Scale Id: Shows in which scale the compound was dispensed

d. Pharma Formulation Tables

In Pharma Formulation only one table is used. The schema structure for Pharma Table is listed below.

Schema structure for Pharma Table:**Table name: Pharma Formulation**

No	Field Name	Type	Size	Comments
1	Pharma_SNO	Integer	4	Auto increment number
2	Component_Name	Text	31	Component name
3	Component_Weight	Text	15	Component weight
4	Tare_Weight	Text	15	Tare weight
5	Start_Date	Date/Time	8	Dispensed Start Date for compound
6	Start_Time	Date/Time	8	Dispensed Start Time for compound
7	Dispensed_Status	Date/Time	8	Component dispensed status: Shows whether component was dispensed manually or through scale
8	Scale_ID	Integer	4	Scale Id: Shows in which scale the compound was dispensed
9	Code_A_Key	Text	31	A key read from ID7
10	Code_B_Key	Text	31	B key read from ID7
11	Code_D_Key	Text	31	D key read from ID7

e. Totalizing Tables

In Totalizing application only one table is used. The schema structure for Totalizing table is listed below.

Schema structure for Totalizing Table:**Table name: Totalizing**

No	Field Name	Type	Size	Comments
1	Totalizing_SNO	Integer	4	Auto increment number
2	Component_Name	Text	31	Component Name
3	Component_Weight	Text	15	Component weight
4	Dispensed_Date	Date/Time	8	Component dispensed date
5	Dispensed_Time	Date/Time	8	Component dispensed time
6	Dispensed_Status	Date/Time	8	Component dispensed status: Shows whether component was dispensed manually or through scale
7	Scale_ID	Integer	4	Scale Id: Shows in which scale the compound was dispensed
8	Code_A_Key	Text	31	A key read from ID7
9	Code_B_Key	Text	31	B key read from ID7
10	Code_D_Key	Text	31	D key read from ID7

15. Uninstalling the software

There are two ways to uninstall MT-FormTool.

1. From the Start menu click **Programs**, then **Mettler Toledo**, and then **Uninstall MT-FormTool**.
2. Activate the Control Panel (Start Menu -> Setting -> Control Panel), double click Add/Remove Programs, and double click on the MT-FormTool list box entry.

16. Glossary

Terms used in MT-FormTool

Actual/Dispensed Tolerance Weight, Delta, Error

Difference between the Actual and Target weight of a compound

Actual Weight

Dispensed compound weight

Batch Filling

One of the dispensing modes in Stored Formulation application that is used to dispense each compound in a formula "n" times iteratively, thus resulting in "n" batches.

Cancelled

Message text in MT-FormTool indicating that the dispensing has been cancelled in the middle of dispensing.

Charge Number

Additional information-text pertaining to each compound in a formula, provided for user-entry when each compound is selected for dispensing.

Connected Terminal Id

Active ID7 terminal for which the monitoring is in progress

Consumed

Used weight of the active Raw Material

End Time

Time when a formula is dispensed completely.

Expand

Option to view compounds in enlarged window

Formula

This is the actual stored formula. A formula can contain up to 100 compounds, each using a Raw Material and having individual target and tolerance values. The formula database can store up to 150 entries.

Formula ID

Abbreviation for Formula Identifier (Alphanumeric text of maximum 10 characters)

Formula Name

Name of the stored formula (Alphanumeric text of maximum 30 characters)

Histogram

Graphical bars showing dispensed parts.

Horizontal Filling

One of the dispensing modes in Stored Formulation application that is used to dispense the compound in the formula in individual containers.

Interrupted

Message text in MT-FormTool indicating that the monitoring has been interrupted in MT-FormTool.

Linear scaling

In linear scaling, each scale unit will be incremented with an absolute value.

Lot Number

Additional information-text pertaining to a formula, provided for user-entry when a formula is selected.

Message

These are texts/actions for user notification during dispensing a formula in Stored Formulation.

MSG Id (Message Id)

Abbreviation for Message-Number in the message database. Valid range is 1 to 200. '0' indicates that no message is used.

Non-linear scaling

In non-linear scaling, each scale unit will be incremented proportionally, where each proportion is logarithmic.

Panel

MT-FormTool Window at the top, in which ID7 screen is simulated

Pie Chart

Graphical sectors showing dispensed parts.

Post (Msg)

Indicates Post-Formula or Post-Compound Message

Pre (Msg)

Indicates Pre-Formula or Pre-Compound Message

Progress Bar

Graphical bars showing dispensed parts.

Raw Materials (RM)

These are items that the stored formula uses. Raw Materials are stored in a database that can store up to 500 Raw Materials.

Read

Command to Read Stored Formula databases from ID7

Report Wizard

Tool that generates reports for monitored details.

RM Description (RM Name)

Abbreviation for Raw Material Name (Alphanumeric text of max. 30 characters)

RM Id

Abbreviation for Raw Material Id. (Alphanumeric text of max. 20 characters)

Send

Command to Write Stored Formula databases to ID7

Shrink

Option to view compounds in minimized window

Split Dispensed Weight

Partial dispensed weight of a compound

Start Time

Time when a formula or compound has been invoked for dispensing

Stock

Remaining Stock of the active Raw Material

Stock Date/Time

Date and Time when stock was updated for the active Raw Material

Stored Formulation

One of the applications in FormPac-XP that supports formulation and dispensing. This application supports three dispensing modes namely VERTICAL, HORIZONTAL and BATCH fillings. Features like scaling a stored formula, rescaling on error generation and saving & restoring of a formula are available.

Synchronization (Sync)

Method to update changes done in MT-FormTool in ID7

Tags

Tags act as a source of additional information for a graph.

Target Weight

Target weight of the compound for the stored formula.

Templates

Template determines the content or style of the report.

Terminal Id

ID7 terminal to which the active formula belongs.

Tolerance Weight

Tolerance of the compound for the stored formula.

Used Count

Usage count of the raw material by the formulae

Vertical Filling

One of the dispensing modes in Stored Formulation application that is used to dispense all the compounds in the formula in a single container (vertically).

Warning

Stock warning pertaining to active Raw Material