

# Weighing Platforms



## **PBA330**

Rugged and robust

9 different sizes

7 weighing capacities

Rectangular or square construction

OIML: 2x3000e MR

NTEP: 5000d



**Uncompromising quality**  
where it really matters

**METTLER TOLEDO**

# When quality is in demand

Are you looking for a solution for critical weighing processes in your receiving and warehouse, production or shipping departments? Would you like the ability to depend on reliable and consistent results? Is it important to you that your high-quality products are always reliably weighed? Then let us help.

Using first-class materials, combined with constant quality control in production and ISO 9001 certified processes, high quality is always a guarantee from METTLER TOLEDO.



## Standard configurations

Model	Platform Size [in]	Maximum Weighing Capacity							Cable Length [ft]
		[kg / lb]							
<b>Rectangular Weighing Platforms</b>									
PBA330-A	9.4x11.8	6/15	15/30						3.3
PBA330-BB	11.8x15.8			35/60	60/150				6.6
PBA330-B	15.8x19.7				60/150	150/300			8.2
PBA330-BC	19.7x25.5				60/150	150/300	300/600		8.2
PBA330-CC	23.6x31.5				60/150	150/300	300/600	600/1200	8.2
<b>Certifiable resolution (Single Range)</b>									
eMin	kg/lb	0.001 / 0.002	0.002 / 0.005	0.005 / 0.01	0.01 / 0.02	0.02 / 0.05	0.05 / 0.1	0.1 / 0.2	
<b>Square Weighing Platforms</b>									
PBA330-QA	9x9	6/15							3.3
PBA330-QB	12x12		15/30	35/60	60/150				6.6
PBA330-QC	18x18				60/150	150/300			8.2
PBA330-QD	24x24				60/150	150/300	300/600		8.2
<b>Certifiable resolution (MultiRange MR)</b>									
eMin	kg/lb	0.001 / 0.002	0.002 / 0.005	0.005 / 0.01	0.01 / 0.02	0.02 / 0.05	0.05 / 0.1	0.1 / 0.2	

Zero setting range = 2% of max. capacity

Temperature range = +10°C to +40°C / +14°F to +104°F

Preload Range = 18% of max. capacity

Taring range subtractive from 0 to max. capacity

# The difference is in the detail

## Ideal for use in the following industries:

- Metal and electrical
- Rubber and plastic
- Chemical
- Pharmaceutical
- Food
- Paper
- Production
- Receiving
- Warehouse
- Shipping

All platforms are supplied with a stainless steel load plate (material – EU: 1.4301, US: AISI304).

The surfaces are brushed with a roughness depth of < 1 µm.



## Features

### ■ Plug and weigh

With IDNet digital interface (optional) to all ID terminals (2.5m or 5m cable)

### ■ Certified resolution

Accuracy Class III, OIML 2 x 3000e MR, NTEP 5000d

### ■ Frame Construction

Steel, powder-coated (partially pre-zinc treated)

### ■ Platter Construction

Stainless steel, 1.4301 or AISI304

### ■ Load Cell Material and level of IP protection

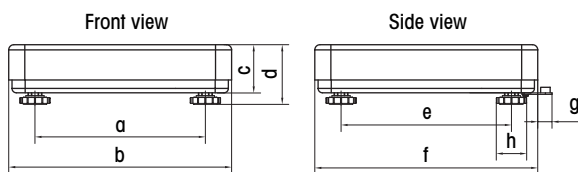
Aluminum, IP65

The PBA330 weighing platforms have several overload stops to ensure the best possible protection against overloads.



Stands can be attached on the long or short side on all models.

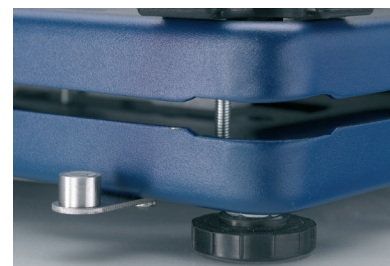
## Dimensions



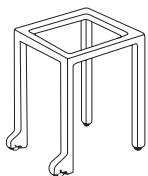
Dimensions (inches)

Model	a	b	c	d	e	f	g	h
PBA330-A	6.9	9.4	2.4	3.1	9.3	11.8	0.9	1.7
PBA330-BB	9.2	11.8	2.6	3.4	13.2	15.9	0.9	1.7
PBA330-B	13.2	15.9	2.6	3.4	17.1	19.7	0.9	1.7
PBA330-BC	17.1	19.7	3.3	4.3	23.1	25.5	0.9	1.7
PBA330-CC	19.8	23.6	3.8	4.7	28.5	31.5	0.8	1.7
PBA330-QA	6.4	9	2.3	3	6.4	9	0.8	1.7
PBA330-QB	9.4	12	2.6	3.3	9.4	12	0.8	1.7
PBA330-QC	15.4	18	2.6	3.4	15.4	18	0.8	1.7
PBA330-QD	21.2	24	3.3	4.3	21.4	24	0.9	1.7

Highly durable frames are powder-coated and pre-zinc treated where necessary. All rubber parts are durable and provide outstanding dampening characteristics.



## Accessories for PBA330 weighing platforms

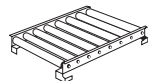


### Bench stand

- Painted frame
- 2 feet with rollers
- Fixed foot w/level screw
- Height: 560mm

PBA330-B 15.8x19.7

PBA330-CC 23.6x31.5



### Roller bed

- Runs lengthwise
- Hot-galvanized for dry environments
- Conductive Rollers (hazardous areas)

PBA330-B 15.8x19.7

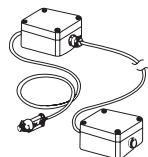
PBA330-BC 19.7x25.5

PBA330-CC 23.6x31.5



### Connection cable extension

32ft/10m long, pluggable at both ends, for separate placement of ID terminal.



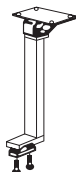
### Connection set for ID terminal

For extension of the connection cable to 328ft.



### Special cable on reel

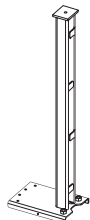
328ft, for use in conjunction with the connection set for extension of the connection cable for ID terminals.



### Pillar support

To fasten terminal on the bench stand, incl. fastening material, painted.

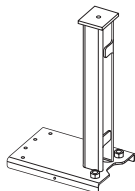
For: ID terminals  
IND4 terminals



### Floor stand

Incl. fastening material, painted.

For: ID terminals  
IND4 terminals



### Scale stand

To fasten terminal on weighing platform, painted.

Height 13 in or 26 in  
For: ID terminals  
IND4 terminal

### Mettler-Toledo, Inc.

1900 Polaris Parkway,  
Columbus, OH 43240  
Tel. 800-METTLER/(614) 438-4511  
Fax (614) 438 4900

### Mettler-Toledo GmbH

PO Box VI-400, CH-8606  
Greifensee, Switzerland  
Tel. +41-44-944 22 11  
Fax +41-44-944 31 70

METTLER TOLEDO® is a registered trademark of Mettler-Toledo Inc. All other brand of product names are trademarks of their respective companies.

Subject to technical changes  
©2007 Mettler-Toledo Inc.  
Printed in USA  
MarCom MTWT  
BP03442.0E

64062514

[www.mt.com](http://www.mt.com)

Visit for more information



**Quality certification.** Development, production, and auditing in accordance with ISO9001. Environmental management system in accordance with ISO14001.

**ServiceXXL®**  
Tailored Services

**Tailored Services.** Our extensive service network is among the best in the world and ensures maximum availability and service life of your product.



### Conformité Européenne

This label is your guarantee that our products conform to the latest guidelines.