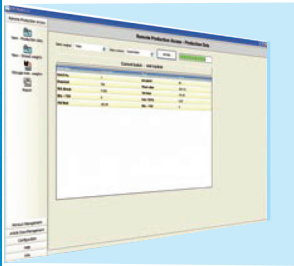


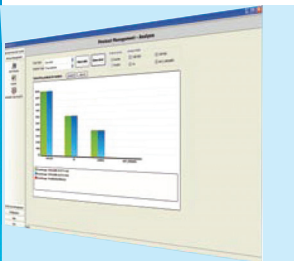
CW-ReACT II program for PC

Remote access to checkweighers



Access

Production results from the checkweigher; the example shows "batch statistics"



Final statistics

Of "Saved pintouts" displayed as a bar graph (diagram) - a pie chart is also available



Article management

Edit parameters of an article (product set-up) or several articles



Individual weights

View and store individual product weights in read time from your production line checkweigher



CW-ReACT II (Remote Access Tool)

Gives easy access to the data stored in your X, S, and E series checkweighers. Using well proven Ethernet connections, you can link to single or multiple checkweighers from any PC fitted with an Ethernet card or through your Ethernet network. This enables you to access the checkweigher data without having to enter the production area.

Technical data

CW-ReACT II

– easy access to your checkweighing data

CW-ReACT II is a Windows based software program which enables remote monitoring and control of information captured by X, S, and E-series checkweighers. This includes production results and statistical reports and enables remote printing, administration and maintenance of the product setup data (article data).

Product setups and production results are stored in a SQL database with export facility (e.g. to MS Excel). Access to this data is through the "SQL Server Express" supplied or via your own SQL server program.

Connection between the checkweighers and the computer running CW-ReACT II is via a separate or your main company network, using fast and reliable Ethernet interface and based on the TCP/IP protocol. Checkweighers to be included in such a network must be fitted with suitable Ethernet interface cards.

CW-ReACT II takes the production area to your desk

- Requirements to retrieve and store product pack data are simplified by uploading data direct to the QA Office.
- Once uploaded, production data can be exported e.g. to MS Excel spreadsheets, or copied (and pasted) into your standard PC software program using the popular MS-Windows™ platform.

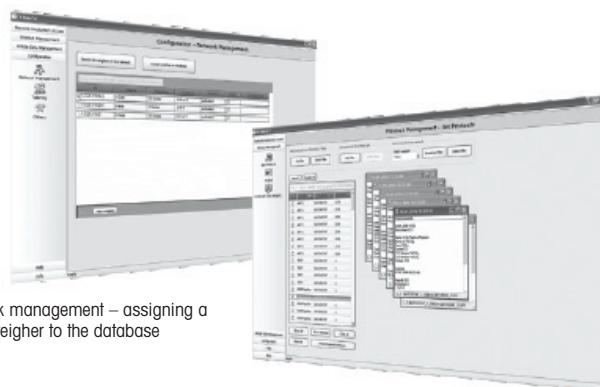
Management of articles and analysis of your production results – with CW-ReACT II

- Product database can be uploaded from the checkweigher, modified or added to on the PC and downloaded back to the checkweigher
- "Individual weights" can be transferred and saved

Remote access to your checkweigher data via Ethernet – with CW-ReACT II

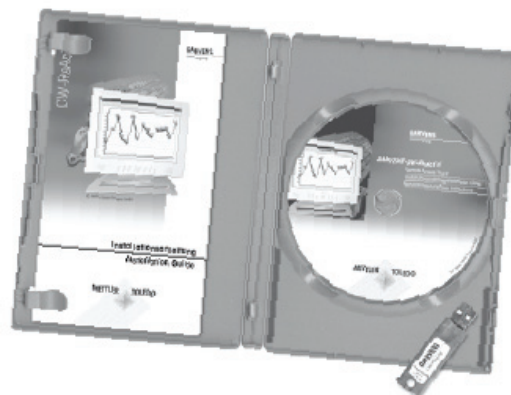
- The system administrator is free to assign a checkweigher ID
- Multiple level access protection for: add checkweigher, check weigher setup, edit article, production results saved printouts
- Password-protected program start

*Note: Saving individual weights or printouts locally will require more memory capacity depending on the length of time and checkweighing throughput.



Network management – assigning a checkweigher to the database

Management of "saved printouts" – retrieving files from a PrintStick, PrintCard or local networks



Scope of delivery: program CD with installation guide, user manual and dongle

Technical requirements	
Compatibility	HI-SPEED checkweigher Topline VS/VO as well as "E Series", "S Series", and "X Series" models
System requirements	Operating system Windows 2000 or Windows XP
	Intel Pentium III or compatible processor with at least 1 GHz
	At least 1 GB RAM
	At least 1 GB free hard disk space*
	Windows installer 3.1 or newer



Mettler-Toledo Hi-Speed, Inc.
5 Barr Road, Ithaca, NY 14850

Toll Free: 800-836-0836
Tel: 607-257-6000
Fax: 607-257-6396
e-mail: hi-speed@mt.com

Subject to technical changes
©2007 Mettler-Toledo Hi-Speed, Inc.
Printed in U.S.A.

6J-01C-0084A

www.mt.com/hi-speed

For more information