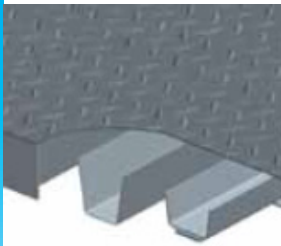


Standard Duty Steel Deck Truck Scale Ideal For Moderate Traffic Applications



High Accuracy

POWERCELL PDX load cells use digital signal processing to provide highly accurate vehicle weighing. Each load cell is equipped with a digital compensation system that maintains accuracy despite changing environmental conditions. Built-in diagnostics simplify troubleshooting.



Orthotropic Design

The orthotropic rib design distributes loads more effectively, is stronger, lighter and resists rust and corrosion better than ordinary I-beam deck structures. It is a design proven both by FEA and decades of real world usage.



Rigorous Testing

Using our Module Masher accelerated-lifecycle test stand, actual weighbridge modules are tested for a minimum of 1 million cycles with a 80,000 pound dual tandem axle live load tire pattern simulating 20 years of use.



Lightning Protection

The StrikeShield lightning protection system has been tested by third-party labs to withstand multiple 30,000 amp lightning strikes. If there's a failure due to lightning, all components are covered for parts, labor, travel and mileage for 10 years.



VTS101 Steel Deck Truck Scale

- Proven performance, affordable price
- Orthotropic support ribs sealed from the elements by automated, continuous welds eliminating internal corrosion
- Superior to designs using I-beams and intermittent welds
- Shaped ribs distribute concentrated loads better than I-beam designs meaning longer service life

This rugged and highly reliable truck scale is backed by the industry's finest service network and most powerful **10 year warranty.**

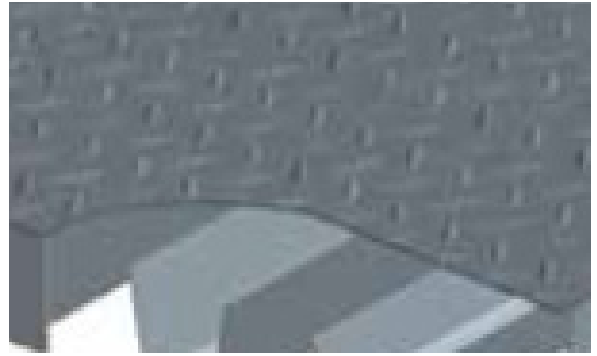
Technical data

VTS101 Truck Scale

Modular Steel Deck Weighbridge

Specifications	
Deck Plate Thickness	5/16 in (8 mm)
Scale Widths	9 ft-10 in, 11 ft (3, 3.3 m)
Scale Lengths	10 to 140 ft (3 to 42.7 m)
Profile	17 in (432 mm)
Module Lengths	10 ft, 15 ft, 17 ft-6 in, 20 ft, 23 ft-4 in (3, 4.6, 5.3, 6.1, 7.1 m)
Usage	50,000 trucks per year (average 200 trucks per day)
Capacity*	90,000 lb (scale lengths ≤ 23 ft-4 in) 150,000 lb (scale lengths > 23 ft-4 in < 60 ft) 200,000 lb (scale lengths ≥ 60 ft)
Foundation Types	Variable Footer, Beam Slab, Deep Pit, or Temporary Frame
eMin	20 lb (10 kg)
nMax	10,000 divisions
NTEP Handbook 44 Tested: Concentrated Load Capacity	80,000 lb (36,287 kg)
NTEP Certificate	01-070A4

*Note: 200,000 lb is the maximum gross capacity that any truck scale can have and still maintain 20-lb increments in legal-for-trade applications.



The orthotropic-rib design ensures that the VTS100 truck scale has no welds in high-stress areas. This greatly reduces fatigue at the welds, a common cause of premature failure in other scale designs.

Applications

For weighing over-the-road vehicles in a wide variety of above-ground and deep-pit applications, including:

- Solid Waste
- Ports
- Forest Products
- Bulk Foods
- Dairy
- Scrap Metals
- Utilities
- Chemicals
- Agriculture

Features	Benefits
Orthotropic Ribs	Safe, robust, and reliable design provides a long service life.
International Intergard® Finish	Protects steel against corrosion even in the harshest environments.
30t POWERCELL® GDD® Load Cells	Digital technology provides accurate vehicle weighing.
Steel Deck	Enables weighing use to start immediately after scale installation.

Options:

- High-Clearance Risers
- Manholes
- Side Rails
- Dolly Landing Pads/Deck Runners
- DataBridge™ Vehicle Scale Software
- Unattended Driver Terminals
- Remote Displays
- Temporary Frame



Side Rails



Manholes



Software



Remote Displays

METTLER TOLEDO Group

Industrial Division

Local contact: www.mt.com/contacts

www.mt.com/vehicle

For more information

Subject to technical changes

© 08/2022 METTLER TOLEDO. All rights reserved

MTMS