

High Performance Immunoprecipitation

The PureSpeed System: Direct IP Method

PureSpeed™ Protein Tips and the E4™ XLS™ pipette enable a rapid, convenient Direct IP workflow.

In biomedical research, it is often necessary to isolate specific proteins from natural sources in order to study them. One of the most commonly used methods to isolate proteins from their biological sources is immunoprecipitation (IP). In IP, proteins from cellular lysate, serum, or other biological fluids are bound to a protein A (ProA) or protein G (ProG) affinity resin using a bridging antibody. The antibody's antigen binding site binds to the protein of interest, while the F_c chain of the antibody binds to ProA or ProG. After washing nonspecifically bound proteins away, the antibody-protein complex is eluted from the resin prior to further analysis.

Key applications that utilize IP include:

- Isolating a protein to determine its molecular weight or physicochemical properties.
- Understanding if a protein has been post-translationally modified.
- Testing whether a protein is produced by a specific tissue, or cell type.
- Probing if a specific protein is expressed upon treatment of an organism or cell with a specific condition (i.e. the presence/absence of a drug) using pulse-chase experiments.

High Performance Immunoprecipitation™

High Performance Immunoprecipitation (HPIP™) is a new process that provides key benefits to the researcher performing IP experiments including:

- Producing replicable protein bands of higher intensity on SDS-PAGE gels, indicating high quality data.
- Very low background obtained by efficient washing of contaminating proteins from the bound antibody-antigen complexes, critical for obtaining accurate conclusions.
- Highly concentrated immunoprecipitated proteins providing a stronger signal compared with competing techniques, reducing the likelihood of repeating experiments.
- Fast processing of samples with the option of simultaneous analysis of up to 12 IPs at a time.

HPIP uses a Rainin E4 XLS electronic pipette and PureSpeed Protein tips containing either ProA or ProG resin to perform reproducible IP experiments. Other components of the system include a 96-deepwell plate, adapters, deepwell plate base and ColorTrak™ guide, shown in Figure 1.



Figure 1: E4 XLS with Purespeed Tips and accessories

The E4 XLS pipette can be programmed to carry out semi-automated liquid processing for IP applications. The system provides high flexibility allowing the user to enter the solution volume, pipetting speed, aliquot number, and cycle number for the resin equilibration, sample capture, wash, and elution steps.

HPIP and method flexibility

Depending on the user's preference, HPIP can be used for either the direct or indirect IP method (for more information on the indirect approach, please see the "High Performance Immunoprecipitation. The PureSpeed System: Indirect IP Method" application note).

Direct IP Method

In the direct IP method, a specific antibody is bound to a PureSpeed ProA or ProG tip in an initial capture step. After binding, excess antibody is rinsed from the resin prior to applying the sample containing the antigen protein target. The immobilized antibody captures the target protein antigen and the resin is then washed to remove nonspecifically bound proteins. After washing, the purified antibody-protein complex is eluted from the resin. Each step of the process is reproducibly controlled by the E4 XLS pipette – maintaining specific aspiration and dispense rates/volumes for the different liquids passing over the resin bed in the PureSpeed tip.

Here, direct IP with PureSpeed is demonstrated using the protocol below.

Direct IP Method using High Performance Immunoprecipitation

Direct IP is preferred when the binding kinetics of antigen protein to antibody are rapid.

With the HPIP system, the affinity resin used to capture the resin is retained at the distal end of a tip (see PureSpeed ProA and ProG data sheet for details) and liquid flow over the resin is controlled by an E4 XLS electronic pipette which is available not only as a single channel system but also a multi-channel system (up to 12 channels) that enables parallel processing of samples.

Direct IP was carried out using the following samples:

- 10 µg of α -GST antibody in 200 µL PureSpeed capture buffer.
- 5 µg of GST-tagged antigen protein spiked into 125 µg of total *E. coli* protein in another 200 µL aliquot of capture buffer.

Direct IP required equilibration, capture, wash, and elution steps. For each step, the appropriate buffers, or protein mixtures were pipetted into different wells in the deepwell plate, prior to starting the PureSpeed program.

Below, each step and its purpose are described:

Equilibration (well 1) – PureSpeed tips are shipped containing glycerol, so the resin was washed with 200 μ L of capture buffer in preparation for antibody capture. Two cycles were carried out using the “high” cycling speed on the PureSpeed program. Equilibration time: 3 minutes.

Capture 1 (well 2) – 10 μ g of α -GST antibody in 200 μ L of capture buffer was moved back and forth over the resin bed in the PureSpeed protein tip. For the PureSpeed program, five pipetting cycles were carried out using the “medium” cycling speed. This accomplished the immobilization of antibody to the resin. This step took 11 minutes and 15 seconds.

Capture 2 (well 3) – Following the first capture step, the resin was washed to remove unbound antibody molecules, as these might interact with the antigen protein and prevent its immobilization. Here, 200 μ L of capture buffer was applied to the resin. Five pipetting cycles were carried out using medium cycling speed. This duration of this step was 11 minutes and 15 seconds.

Capture 3 (well 4) – 200 μ L of solution containing 5 μ g of GST-tagged antigen protein and 125 μ g of *E. coli* total protein in capture buffer was moved back and forth over the resin bed. The GST-tagged antigen protein binds to the captured antibody already on the resin. Here, five pipetting cycles were used with medium cycling speed. After cycling, the resin had both antibody and antigen proteins bound. This step required 11 minutes and 15 seconds.

Wash 1 (well 5) – To remove potential contaminant proteins, the resin was washed with capture buffer. Here, 200 μ L of buffer was used with a single, medium speed cycle. This step was completed in 2 minutes and 15 seconds.

Wash 2 (well 6) – A second wash step was included to further remove contaminants. Again, 200 μ L of capture buffer was used in a single, medium speed cycle. This step was also completed in 2 minutes and 15 seconds.

Elution (well 7) – The last step in the protocol was the elution of the antibody and antigen proteins. 40 μ L of acidic enrichment buffer was applied to the resin. Five pipetting cycles, carried out at “medium” speed, were used. This final step required 6 minutes and 50 seconds. After completion of the protocol, the antibody-antigen sample was collected from the deepwell plate and neutralized by adding a $\frac{1}{4}$ volume of PureSpeed neutralization buffer.

Total processing time for the HPIP direct method: < 50 minutes

SDS-PAGE Analysis

Eluate samples and pre-immunoprecipitated lysate were mixed with 5 X Sample Loading Buffer (National Diagnostics) prior to heating at 80 °C for 10 minutes. The samples were briefly centrifuged and then loaded onto a 10 % Polyacrylamide Tris-Glycine Gel (Novex). After electrophoresis, the gels were silver stained for band visualization.

Experimental Data

Gel Legend

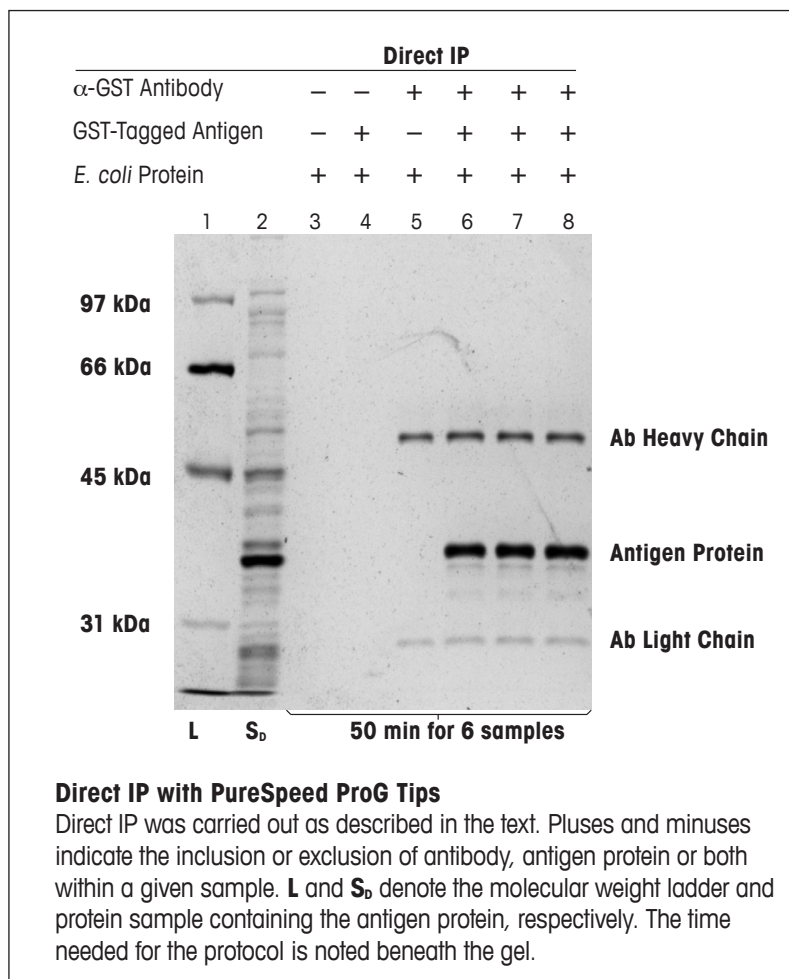
- 1 Ladder
- 2 PureSpeed Protein Sample Containing Antigen
- 3 PureSpeed Direct IP: – Antibody; – Antigen Protein
- 4 PureSpeed Direct IP: – Antibody; + Antigen Protein
- 5 PureSpeed Direct IP: + Antibody; – Antigen Protein
- 6 PureSpeed Direct IP: + Antibody; + Antigen Protein
- 7 PureSpeed Direct IP: + Antibody; + Antigen Protein
- 8 PureSpeed Direct IP: + Antibody; + Antigen Protein

Load volumes were 5 µL for all samples

Summary

The PureSpeed HPIP system brings efficiency, robustness and ease to IP protocols, demonstrating a direct IP protocol in less than 50 minutes. The data is highly reproducible: three replicates show similar data for the direct method. The semi-automated format of PureSpeed and E4 XLS electronic pipette reduces the amount of time the user needs to pipette.

Rainin, PureSpeed, E4, XLS, High Performance Immunoprecipitation, HPIP and ColorTrak are all trademarks of Rainin Instrument, LLC.



Rainin Instrument, LLC

7500 Edgewater Drive
Oakland, CA 94621
Phone +1 510 564 1600
Fax +1 510 564 1617

Subject to technical changes
© 07/2012 Mettler-Toledo, Intl.
Printed in US. PS_AP_HPIP_D RevA

www.mt.com

For more information