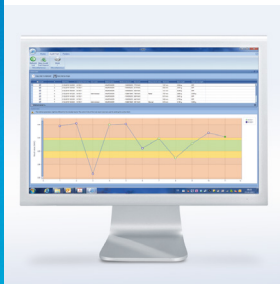


## Simple Data Management With EasyDirect™ Moisture Software



### Collect Data Automatically

Collect moisture data from up to five instruments. Minimize manual transcription errors, save time and store data securely thanks to electronic data handling based on a SQL database.



### Efficient Result Handling

Review results, filter by date, instrument, user or sample. Visualize results in charts and perform statistics for efficient result analysis.



### Easy Reporting

Generate simple and clear reports of moisture content results. Export data to PC in various formats (CSV, XML or PDF) or print on a network printer.



### Central Instrument Management

Make sure your instrument is always up to date and ready to provide accurate moisture results. Monitor instrument status and schedule routine testing and service.



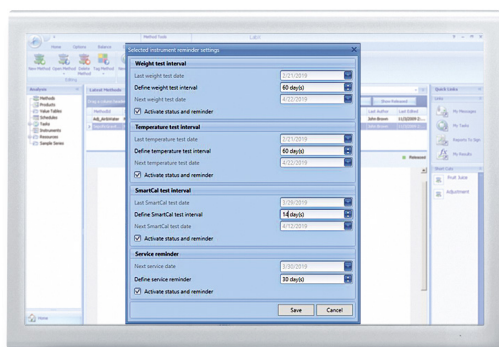
### Moisture Result Data Handling Made Easy

Connect your moisture analyzers to EasyDirect Moisture PC Software and improve the management and handling of your data. Installation and setup are simple and fast, and operation is intuitive.

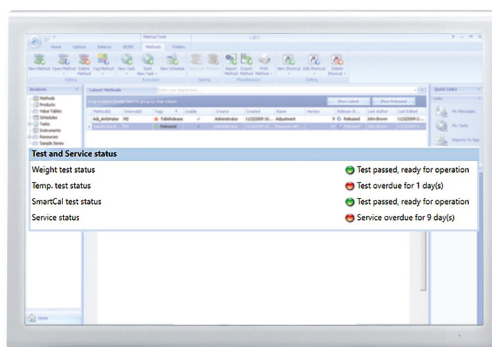
Improve the efficiency of your moisture determination workflows: collect moisture data automatically, create reports, visualize results in control charts, perform statistics and manage your instruments centrally.

Download your 45-day free trial version at:

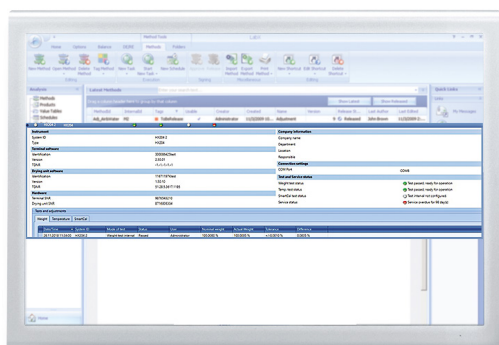
► [www.mt.com/moisture-software](http://www.mt.com/moisture-software)



Schedule Instrument Routine Testing



Monitor Test and Service Status



Instrument Overview



Visualization of Drying Curve

## Technical Description

Supported Instruments	HX204, HS153, HC103
Max. No. of Instruments	5
Connectivity	USB, RS232
Database	SQL Express 2012
PC Requirements	OS: Windows Pro 7 & Pro 10
Data Collection	Measurement results, Test & Adjustment results
Report Formats	PDF, CSV, XML
Instrument Management	Routine test and service scheduling and reminder, Instrument and status overview
Protection	Password protection of settings and results
Languages	English, German, French, Spanish, Italian, Polish, Czech, Hungarian, Portuguese, Japanese, Chinese, Korean

**METTLER TOLEDO Group**  
 Laboratory Weighing  
 Local contact: [www.mt.com/contacts](http://www.mt.com/contacts)

[www.mt.com/moisture-software](http://www.mt.com/moisture-software)

For more information

Subject to technical changes  
 © 04/2019 METTLER TOLEDO. All rights reserved  
 30527838  
 Group MarCom 2631 KR/JK