

Address 1900 Polaris Parkway, Columbus, OH 43240-4035  
Phone (800) METTLER  
(800) 638-8537  
Fax (614) 438-4900

[www.mt.com](http://www.mt.com)

April 26, 2024

Dear Valued Customer:

Thank you for your inquiry of METTLER TOLEDO's quality system(s).

METTLER TOLEDO is a global manufacturer and marketer of precision instruments for use in laboratory, industrial and food retailing applications. METTLER TOLEDO has multiple global manufacturing facilities. All of the Company's manufacturing facilities in Europe, the United States, and China are ISO 9001 registered. In addition to a broad product offering, the Company has one of the largest global sales & service organizations among precision instrument companies. The METTLER TOLEDO Company's various organizations currently operate under their own Quality Management Systems (QMS) pertaining to their specific sub-groups or divisional business areas.

Under Mettler-Toledo, LLC, the METTLER TOLEDO North America (MT-NA) entity is responsible for operating the marketing, sales & service sub-groups of the Laboratory, Industrial, and Retail divisional business areas in the U.S. & Canada. MT-NA's Laboratory and Industrial business operations are controlled by an ISO 9001 registered QMS. These two divisional business areas are also ISO 17025 accredited by A2LA. Our field service operations use only certified weights, traceable to national standards; the National Institute of Standards and Technology (NIST) in the U.S. and Standards Council of Canada (SCC) in Canada.

MT-NA is devoted to quality and pleased that, by the very nature of your request, you have shown this same commitment. Notably, we receive many requests for information and, in response, have compiled this comprehensive Quality Self-Assessment Packet. This packet should address the intent and/or requirements of your questionnaire, supplier survey, qualification documents, or onsite audit request.

## Packet Index by page

- 1 Mettler-Toledo, LLC introduction letter
- 2-5 Answers to common survey questions
- 6 Company Timeline
- 7-8 ISO 9001:2015 Certificate - Bureau Veritas - US018725
- 9-12 ISO 17025:2017 Accreditation Certificate - A2LA LAB 1788.01
- 13-17 ISO 17025:2017 Accreditation Certificate - A2LA INDUSTRIAL 1902.01
- 18-20 ISO 17025:2017 Accreditation Certificate - A2LA PIPETTES 1788.02
- 21-25 MT-NA Quality Manual
- 26-27 Certificate of Insurance (COI) for US & Canada
- 28 W9
- 29 Business Profile, Size, and Certification
- 30-33 US & Canada Banking Information



Regards,  
Brian Orr  
Quality Manager - METTLER TOLEDO North America  
Quality.MTNA@mt.com  
1-800-638-8537

**METTLER TOLEDO**

**Mettler-Toledo, LLC (MT-NA Marketing Organization)**  
**QUALITY SELF-ASSESSMENT 2024**

Company Name/Division:	Mettler-Toledo, LLC		
Address/City/State/Zip/Country:	1900 Polaris Parkway, Columbus, OH 43240-2020 USA		
Website:	www.us.mt.com	Primary NAICS:	333998
Phone:	1.800.638.8537 Extension: 104511	D&B Number:	19-464-9323
		FEIN Number:	34-1538688
		CAGE Code:	12021
Fax:	614.438.4900	Website:	<a href="http://www.mt.com">www.mt.com</a>
Parent Company	Mettler-Toledo International Inc		
Parent Company Address	Im Langacher, CH-8606 Greifensee, Zurich, Switzerland		
Phone:	+41.44.944.2211		
Fax:	+41.44.944.2255		
<b>Key Personnel for the Mettler-Toledo, LLC / MT- NA (North America) Marketing Organization</b>			
MT-NA General Manager	T. Alton Hill		
MT-CDN General Manager - Canada	Can Seyhan		
MT-NA Head of Service Operations	Matthew Bendick		
MT-CDN Head of Service - Canada	Pam Muehlhaeusser		
MT-NA Business Manager – Lab	Katie Cropp		
MT-NA Business Manager – Industrial	Scott Aiello		
MT-NA Business Manager – Retail	Guy Dille		
MT-NA Customer Experience Manager	Erin Hoelscher		
MT-NA Quality Manager	Brian Orr		
MT-CDN Quality Manager - Canada	Tammy Rogers		
<b>Contact Information</b>			
MT-NA Support Office: Customer Service   Sales   Contracts   Scheduling   Invoicing   etc.	<a href="mailto:servicerequests@mt.com">servicerequests@mt.com</a> or 1.800.METTLER (1.800.638.8537)		
MT-NA Quality	<a href="mailto:Quality.MTNA@mt.com">Quality.MTNA@mt.com</a>		
MT-NA Safety	<a href="mailto:Safety.MTNA@mt.com">Safety.MTNA@mt.com</a>		
<b>Business Size, Site &amp; Personnel Information</b>			
Location	1900 Polaris Parkway, Columbus, OH 43240-2020 USA		
# of Years in Business/Operation:	123 years (Founded 1901 as Toledo Scale Company, Inc.)		
# of Years at Current location	Since 1998, 26 years		
Size of Facility 1 (Office Space)	88,000 SF 1900 Polaris Parkway Columbus, OH 43240-2020 USA		
Size of Facility 2 (Office & Warehouse)	13,480 SF 2915 Argentia Drive Mississauga, ON, L5N 8G6 CDN		
Size of Facility 3 (Office & Lab Depot )	7,920 SF 1150 Dearborn Drive Worthington, OH 43085 USA		
# of Shifts / Hours of Operation	1 / Monday - Friday 7 am – 7 pm & Saturday 8 am - 5 pm (EST)		
# of employees - US	Permanent: 1025	Temporary: 4	
# of employees - Canada	Permanent: 155	Temporary: 0	
Total Employees (US & Canada)	Permanent: 1,180	Temporary: 4	
Union Status	US: Non-Union	Canada: 38 IAMAW Members	
Turnover Rate (Full-Time Personnel)	US: % 12.14	Canada: 11.6%	
Calibration Standards	All standards are traceable to a national or international metrology institute		

Mettler-Toledo, LLC (MT-NA Marketing Organization)  
**QUALITY SELF-ASSESSMENT 2024**

<b>Disaster Recovery/Business Continuity Planning</b>				
<p>MT 060 Business Continuity Planning- Requires all units to define their approach to BCP. The Company also has a best practice tool kit to support business units deploying and effectiveness plans.                      Daily server backups &amp; off-site backup maintained for recovery.</p>				
<b>Certifications</b>				
<b>Certificate</b>	<b>Registrar</b>	<b>Last Audit</b>	<b>Certificate #</b>	<b>Expiration Date</b>
ISO 9001:2015	Bureau Veritas (BVC)	August 2023 (OnSite)	US018725	11.7.2026
ISO/IEC 17025:2017	A2LA - Lab	July 2022 (Onsite)	1788.01	7.31.2024
ISO/IEC 17025:2017	A2LA - Industrial	January 2023 (Onsite)	1902.01	4.30.2025
ISO/IEC 17025:2017	A2LA - Pipettes	February 2023 (Onsite)	1788.02	1.31.2025
C-TPAT certified (Customs-Trade Partnership Against Terrorism)			SVI# 91918908	
<p>Please visit our <b>Certifications &amp; Accreditations</b> page to download current certificates:  <a href="http://us.mt.com/us/en/home/supportive_content/specials/maw_quality_01042006_1.html">http://us.mt.com/us/en/home/supportive_content/specials/maw_quality_01042006_1.html</a></p>				
<b>Regulatory Information</b>				
<p>As a service division, Mettler-Toledo, LLC is not subject to registration, inspection, accreditation, or certification by any regulatory body or agency. We are neither FDA regulated nor a cGMP facility.</p>				
<b>Type of Business</b>				
<p>We provide Calibration Services of precision weighing instruments &amp; analytical devices and Product Sales via catalog at Mettler-Toledo, LLC. Product specific information can be found at <a href="http://www.us.mt.com">www.us.mt.com</a>.</p> <p>Under Mettler-Toledo, LLC, the METTLER TOLEDO North America (MT-NA) entity is responsible for operating the marketing, sales &amp; service sub-groups of the Laboratory, Industrial, and Retail divisional business areas in the U.S. &amp; Canada. MT-NA's Laboratory and Industrial business operations are controlled by an ISO 9001-registered QMS.</p> <p>No manufacturing, production, programming, or design is performed at this site. Mettler Toledo has multiple global manufacturing facilities. All of the Company's manufacturing facilities in Europe, the United States, and China are ISO 9001 registered. The METTLER TOLEDO Company's various organizations operate under their own Quality Management Systems (QMS) pertaining to their specific sub-groups or divisional business areas.</p> <p>More information can be found at <a href="http://www.mt.com/us/en/home/site_content/investors.html?p=">http://www.mt.com/us/en/home/site_content/investors.html?p=</a> , <a href="https://www.mt.com/us/en/home/microsites/sustainability.html?cmp=als_sustainability">https://www.mt.com/us/en/home/microsites/sustainability.html?cmp=als_sustainability</a>, &amp; <a href="https://www.mt.com/us/en/home/site_content/contact_us.html">https://www.mt.com/us/en/home/site_content/contact_us.html</a></p>				
<b>Terms &amp; Conditions</b>				
<p>Standard Terms &amp; Conditions for Sales and Service. Link-&gt; <a href="#">Here</a></p>				
<b>Quality Management</b>				
<ul style="list-style-type: none"> <li>• The site has a Change Notification Policy, Nonconforming Calibration Results Policy, and Corrective/ Action Policy.</li> </ul>				
<ul style="list-style-type: none"> <li>• The site also has an employee training program that is documented in writing and/or electronically via LMS. Job-specific training requirements are clearly defined for each position.</li> </ul>				
<ul style="list-style-type: none"> <li>• The Quality Management System is electronic-based and accessible via SharePoint to all direct employees.</li> </ul>				
<ul style="list-style-type: none"> <li>• The company has a written Quality Manual. Please refer to NQ0001 (In this packet PDF pages 21-25)</li> </ul>				

Mettler-Toledo, LLC (MT-NA Marketing Organization)  
**QUALITY SELF-ASSESSMENT 2024**

<ul style="list-style-type: none"><li>• The site has documented instructions, procedures, standards, and manuals that are maintained, up-to-date, and are readily available to the employees.</li></ul>
<ul style="list-style-type: none"><li>• Document Revision &amp; Approval procedures are clearly defined. Obsolete procedures or documents are promptly removed from all controlled points of use.</li></ul>
<ul style="list-style-type: none"><li>• Periodic review of the Quality System is performed by management. Internal Audits are also performed per ISO 9001 &amp; ISO 17025 standard compliance of processes within scope of those accreditations.</li></ul>
<b><i>Non-conforming Service</i></b>
<ul style="list-style-type: none"><li>• A written procedure is in place for the handling, disposition, and documentation of nonconforming calibration services, results and/or certificates.</li></ul>
<ul style="list-style-type: none"><li>• Non-conforming deviations are clearly identified and immediately investigated to determine impact (if any) to calibrations performed in order to contact impacted customers (if necessary).</li></ul>
<ul style="list-style-type: none"><li>• Notification of Change Agreements can be arranged for customer notification of nonconforming services</li></ul>
<b><i>Quality Audits</i></b>
<ul style="list-style-type: none"><li>• Internal audits of the entire quality system, including field service, are conducted annually</li></ul>
<ul style="list-style-type: none"><li>• Internal audits are performed by personnel independent of the area audited.</li></ul>
<ul style="list-style-type: none"><li>• Internal audit reports are brought to management's attention. Any nonconformities are reviewed immediately.</li></ul>
<b><i>Corrective Action/Preventive Action</i></b>
<ul style="list-style-type: none"><li>• Procedures exist that require prompt and appropriate corrective action to be taken as required.</li></ul>
<ul style="list-style-type: none"><li>• A documented Quality Notification/Corrective Action system is in place to address adverse quality issues or trends.</li></ul>
<ul style="list-style-type: none"><li>• The results of audits and corrective action results are reviewed by management for completion and effectiveness.</li></ul>
<ul style="list-style-type: none"><li>• Corrective action also extends to Mettler Toledo production organizations/sites.</li></ul>
<b><i>Training</i></b>
<ul style="list-style-type: none"><li>• Employees are trained on procedures and training is documented in LMS.</li></ul>
<ul style="list-style-type: none"><li>• Employees are qualified for the jobs they perform.</li></ul>
<ul style="list-style-type: none"><li>• Each employee has a resume and training records on file.</li></ul>
<ul style="list-style-type: none"><li>• A job description exists for each employee.</li></ul>
<ul style="list-style-type: none"><li>• Retraining is conducted as needed.</li></ul>
<b><i>Record Retention</i></b>
<ul style="list-style-type: none"><li>• Most Records are maintained for a minimum of three (3) years. However, retention varies depending on the type of record. Records retention table NT0002 maintained on the MT-NA QMS site.</li></ul>
<b><i>Customer Complaints</i></b>
<ul style="list-style-type: none"><li>• Procedures are in place for complaint handling and timely resolution of all complaints.</li></ul>
<ul style="list-style-type: none"><li>• Complaints are reviewed and analyzed for trends.</li></ul>

Mettler-Toledo, LLC (MT-NA Marketing Organization)  
**QUALITY SELF-ASSESSMENT 2024**

**Useful site links:**

Please refer you to the following web sites for more information regarding the characterization and principles of the METTLER TOLEDO group:

[www.mt.com](http://www.mt.com) | [www.us.mt.com](http://www.us.mt.com) | [www.ca.mt.com](http://www.ca.mt.com)  
GLOBAL                      UNITED STATES                      CANADA

**Interested in our Employee Health and Safety Program?**

We also publish a Safety Self-Assessment packet for the the US and Canada, as well as Experience Modification Rating (EMR) & OSHA (300A). [Here](#)

**Do you need information beyond Safety and Quality?**

Then please visit our other links on our Request for Information Main Page [here](#).

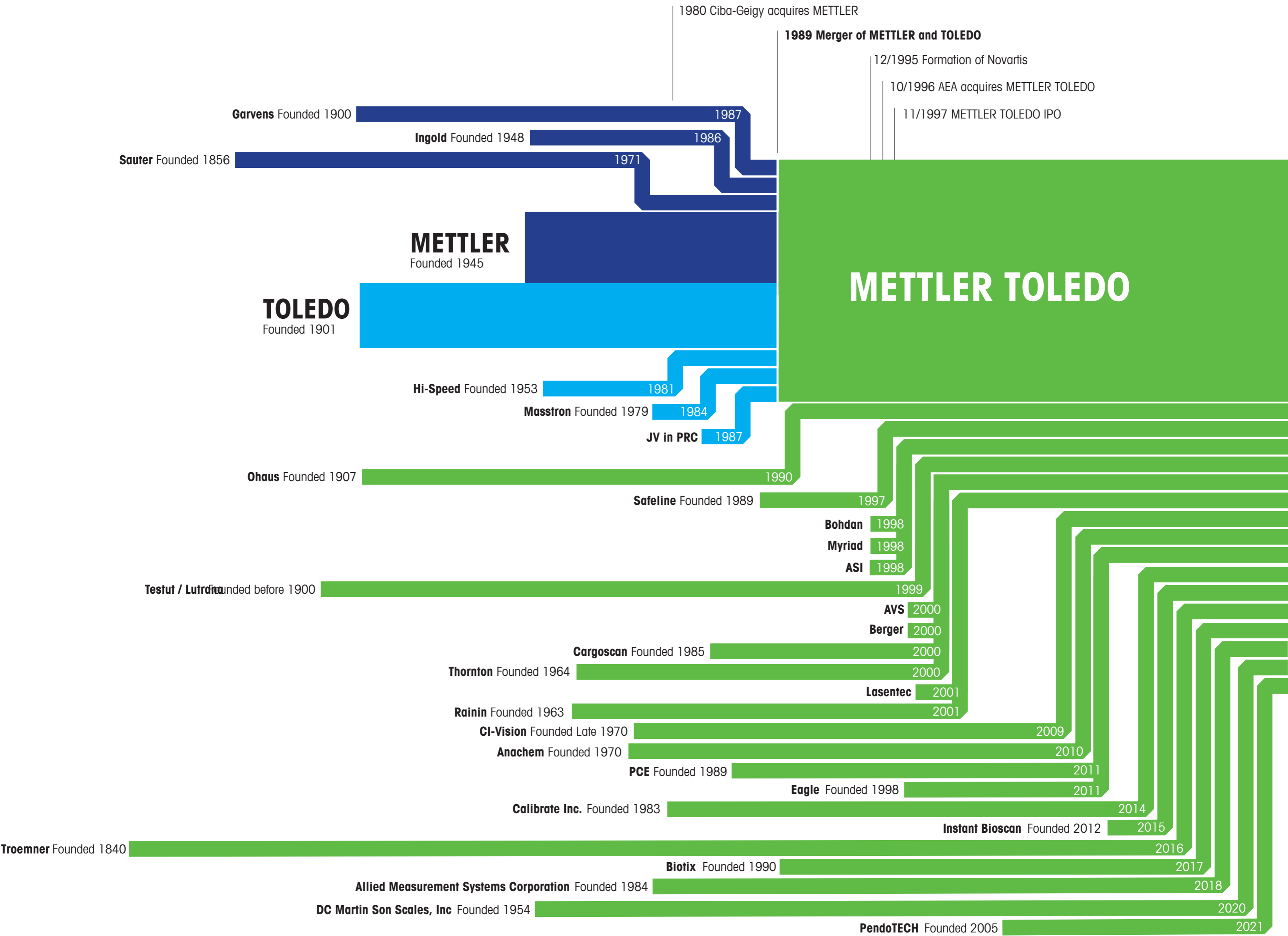
There you will find more information which additionally includes: **Legal, Business and Financial, Sustainability, and Human Resources** pertaining to the **Industrial, Laboratory, and Retail** divisions of **Mettler-Toledo, LLC (US)** and **Mettler-Toledo Inc. (Canada)**.

*Disclaimer:*

The information provided herein is for your information only. It does not extend our liability in any way.

This information was prepared by using reasonable efforts and reflects METTLER TOLEDO's findings at the date of its creation. Without prejudice to any rights or obligations under existing written agreements, METTLER TOLEDO makes no representations, warranties, or assurances of any kind, expressed or implied, including but not limited to the accuracy, currency, completeness or reliability of the information provided. METTLER TOLEDO shall in no event be liable for any damages, including direct, consequential, incidental and special or any injury resulting from your access to or use of this report or from your reliance on any information provided.

The information contained herein is the property of and copyrighted by METTLER TOLEDO and may not be reproduced, disseminated, sold, distributed, published, circulated or commercially exploited without the express written permission of METTLER TOLEDO.







BUREAU  
VERITAS

Bureau Veritas Certification

# Mettler-Toledo, LLC

1900 Polaris Parkway, Columbus, OH 43240 USA

This is a multi-site certificate, additional site(s) are listed on the next page(s)

*Bureau Veritas Certification Holding SAS - UK Branch certifies that the Management System of the above organisation has been audited and found to be in accordance with the requirements of the management system standards detailed below*

## ISO 9001:2015

Scope of certification

**Marketing, Sales, Installation and Service of Balance, Analytical Instruments, Scales, and Weighing Systems for the Industrial and Laboratory Market**

Original cycle start date:	21-October-2005
Expiry date of previous cycle:	07-November-2023
Certification / Recertification Audit date:	08-September-2023
Certification / Recertification cycle start date:	08-November-2023
Subject to the continued satisfactory operation of the organisation's Management System, this certificate expires on:	07-November-2026

Certificate No.: US018725

Version: 1

Issue date: 12-October-2023

*Brian Sanders*



0008

**Signed on behalf of BVCH SAS UK Branch**

Certification Body Address: 5th Floor, 66 Prescot Street, London, E1 8HG, United Kingdom

Local Office: 16800 Greenspoint Park Drive Suite 3005 Houston, TX 77060, USA

Further clarifications regarding the scope and validity of this certificate can be found by selecting or scanning the QR Code shown on the left.







BUREAU  
VERITAS

# Mettler-Toledo, LLC

## ISO 9001:2015

### Scope of certification

Site Name	Site Address	Site Scope
Mettler-Toledo, LLC - HQ	1900 Polaris Parkway, Columbus, OH 43240 USA	Marketing, Sales, Installation and Service of Balance, Analytical Instruments, Scales, and Weighing Systems for the Industrial and Laboratory Market
Site 2	1150 Dearborn Dr. Worthington, OH 43085 USA	Order Management and Service of Balances, Analytical Instruments, Scales, and Weighing Systems for the Industrial and Laboratory Market
Site 3	2915 Argentia Rd. Mississauga, ON L5N 8G6 Canada	Marketing, Sales, Distribution, Installation and Service of Balances, Analytical Instruments, Scales, Product Inspection, Pipettes and Weighing Systems for the Industrial and Laboratory Market

Bureau Veritas Certification

Certificate No.: US018725

Version: 1

Issue date: 12-October-2023

*Brian Sanders*



**Signed on behalf of BVCH SAS UK Branch**

Certification Body Address: 5th Floor, 66 Prescot Street, London, E1 8HG, United Kingdom

Local Office: 16800 Greenspoint Park Drive Suite 300S Houston, TX 77060, USA

Further clarifications regarding the scope and validity of this certificate can be found by selecting or scanning the QR Code shown on the left.







SCOPE OF ACCREDITATION TO ISO/IEC 17025:2017  
& ANSI/NCSL Z540-1-1994

METTLER TOLEDO, LLC  
1900 Polaris Pkwy  
Columbus, OH 43240  
Charles Francis Phone: 614 438 4590

CALIBRATION

Valid To: July 31, 2024

Certificate Number: 1788.01

In recognition of the successful completion of the A2LA evaluation process, accreditation is granted to this laboratory to perform the following calibrations<sup>1, 7</sup>:

I. Fluid

Parameter/Equipment	Range	CMC <sup>2</sup> (±)	Comments
Mettler Toledo Auto Titrator Burettes Only <sup>3, 6, 8</sup> — Volumetric	5 mL 10 mL 20 mL	3.0 µL 7.0 µL 8.0 µL	Gravimetric comparison method

II. Mechanical

Parameter/Equipment	Range <sup>5</sup>	CMC <sup>2, 4</sup> (±)	Comments
Balances <sup>3, 6</sup>	0.1 µg to 80 kg Up to 200 lb	0.80D 0.80D	Canada: Euramet cg-18 v4 ASTM E898-20, OIML Class E2 weights, OIML Class F1 weights

Parameter/Equipment	Range <sup>5</sup>	CMC <sup>2</sup> (±)	Comments
Balances <sup>3,6</sup> (cont)	≤ 20 mg	0.0011 mg	United States: Euramet cg-18 v4 ASTM E898-20 OIML Class E2 weights OIML Class F1 weights
	(> 20 to ≤ 50) mg	0.0013 mg	
	(> 50 to ≤ 100) mg	0.0016 mg	
	(> 100 to ≤ 200) mg	0.0019 mg	
	(> 200 to ≤ 500) mg	0.0025 mg	
	> 500 mg to ≤ 1 g	0.0031 mg	
	(> 1 to ≤ 2) g	0.0037 mg	
	(> 2 to ≤ 5) g	0.0051 mg	
	(> 5 to ≤ 10) g	0.0081 mg	
	(> 10 to ≤ 20) g	0.0099 mg	
	(> 20 to ≤ 50) g	0.014 mg	
	(> 50 to ≤ 100) g	0.021 mg	
	(> 100 to ≤ 150) g	0.034 mg	
	(> 150 to ≤ 200) g	0.044 mg	
	(> 200 to ≤ 300) g	0.063 mg	
	(> 300 to ≤ 400) g	0.087 mg	
	(> 400 to ≤ 500) g	0.089 mg	
	(> 500 to ≤ 700) g	0.15 mg	
	(> 700 to ≤ 1000) g	0.18 mg	
	(> 1 to ≤ 1.5) kg	0.26 mg	
	(> 1.5 to ≤ 2) kg	0.34 mg	
	(> 2 to ≤ 2.3) kg	0.39 mg	
	(> 2.3 to ≤ 3) kg	0.52 mg	
	(> 3 to ≤ 4) kg	0.67 mg	
	(> 4 to ≤ 5.1) kg	0.85 mg	
	(> 5.1 to ≤ 6) kg	3.2 mg	
	(> 6 to ≤ 7) kg	3.3 mg	
	(> 7 to ≤ 8) kg	3.4 mg	
	(> 8 to ≤ 10) kg	6.0 mg	
	(> 10 to ≤ 15) kg	9.0 mg	
	(> 15 to ≤ 20) kg	12 mg	
	(> 20 to ≤ 26) kg	15 mg	
(> 26 to ≤ 30) kg	18 mg		
(> 30 to ≤ 40) kg	24 mg		
(> 40 to ≤ 50) kg	30 mg		
(> 50 to ≤ 60) kg	36 mg		
(> 60 to ≤ 64) kg	37 mg		

### III. Thermodynamics

Parameter/Equipment	Range	CMC <sup>2</sup> (±)	Comments
Mettler Toledo DSC <sup>3,6</sup>	(-57 to 419.5) °C (28.75 to 151.8) J/g	0.05 °C 0.05 J/g	Test point based on reference material used
Mettler Toledo TGA <sup>3,6</sup>	(156.6 to 1550) °C	0.05 °C	Test point based on reference material used

<sup>1</sup> This laboratory offers commercial calibration service.

<sup>2</sup> Calibration and Measurement Capability Uncertainty (CMC) is the smallest uncertainty of measurement that a laboratory can achieve within its scope of accreditation when performing more or less routine calibrations of nearly ideal measurement standards or nearly ideal measuring equipment. CMCs represent expanded uncertainties expressed at approximately the 95 % level of confidence, usually using a coverage factor of  $k = 2$ . The actual measurement uncertainty of a specific calibration performed by the laboratory may be greater than the CMC due to the behavior of the customer's device and to influences from the circumstances of the specific calibration.

<sup>3</sup> Field calibration service is available for this calibration. Please note the actual measurement uncertainties achievable on a customer's site can normally be expected to be larger than the CMC found on the A2LA Scope. Allowance must be made for aspects such as the environment at the place of calibration and for other possible adverse effects such as those caused by transportation of the calibration equipment. The usual allowance for the actual uncertainty introduced by the item being calibrated, (e.g. resolution) must also be considered and this, on its own, could result in the actual measurement uncertainty achievable on a customer's site being larger than the CMC.

<sup>4</sup> In the calculation of CMC,  $D$  is based upon "Readability" of balance and the CMC of reference weights.

<sup>5</sup> For calibration of balances the "Range" equals the "Readability" of the balance.

<sup>6</sup> This accreditation includes those field service representatives located in the United States and Canada reporting to METTLER TOLEDO (Lab Division), Columbus, Ohio.

<sup>7</sup> This scope meets A2LA's *P112 Flexible Scope Policy*.

<sup>8</sup> Calibration and Measurement Capability (CMC) represents 100 percent of the burette volume.



# Accredited Laboratory

A2LA has accredited

**METTLER TOLEDO, LLC.**

*Columbus, OH*

for technical competence in the field of

**Calibration**

This laboratory is accredited in accordance with the recognized International Standard ISO/IEC 17025:2017 *General requirements for the competence of testing and calibration laboratories*. This laboratory also meets the requirements of ANSI/NCSL Z540-1-1994 and R205 – Specific Requirements: Calibration Laboratory Accreditation Program. This accreditation demonstrates technical competence for a defined scope and the operation of a laboratory quality management system (refer to joint ISO-ILAC-IAF Communiqué dated April 2017).



Presented this 22<sup>nd</sup> day of July 2022.

A blue ink signature of the Vice President of Accreditation Services.

Vice President, Accreditation Services  
For the Accreditation Council  
Certificate Number 1788.01  
Valid to July 31, 2024

*For the calibrations to which this accreditation applies, please refer to the laboratory's Calibration Scope of Accreditation.*





SCOPE OF ACCREDITATION TO ISO/IEC 17025:2017  
& ANSI/NCSL Z540-1-1994

METTLER TOLEDO (INDUSTRIAL)  
1900 Polaris Parkway  
Columbus, OH 43240  
Scott Wittke Phone: 630 936 6538

CALIBRATION

Valid To: April 30, 2025

Certificate No: 1902.01

In recognition of the successful completion of the A2LA evaluation process, accreditation is granted to this laboratory to perform the following calibrations<sup>1,4,6</sup>:

I. Mechanical

Parameter/Equipment	Range	CMC <sup>2,5</sup> (±)	Comments
Balances and Scales, Metric <sup>3</sup>	≤ 500 mg > 500 mg to ≤ 5 g (> 5 to ≤ 10) g (> 10 to ≤ 30) g (> 30 to ≤ 50) g (> 50 to ≤ 80) g (> 80 to ≤ 100) g (> 100 to ≤ 150) g (> 150 to ≤ 200) g (> 200 to ≤ 300) g (> 300 to ≤ 500) g	0.0087 mg 0.013 mg 0.017 mg 0.023 mg 0.036 mg 0.057 mg 0.11 mg 0.14 mg 0.17 mg 0.24 mg 0.89 mg	ASTM 0 weights

Parameter/Equipment	Range	CMC <sup>2,5</sup> (±)	Comments
Balances and Scales, Metric <sup>3</sup> (cont)	(> 500 to ≤ 1000) g	8.7 mg	ASTM 2 weights
	(> 1 to ≤ 1.5) kg	9.3 mg	
	(> 1.5 to ≤ 2) kg	10 mg	
	(> 2 to ≤ 3) kg	12 mg	
	(> 3 to ≤ 4) kg	14 mg	
	(> 4 to ≤ 5) kg	17 mg	
	(> 5 to ≤ 6) kg	19 mg	
	(> 6 to ≤ 8) kg	85 mg	
	(> 8 to ≤ 10) kg	87 mg	
	(> 10 to ≤ 15) kg	93 mg	
	(> 15 to ≤ 25) kg	410 mg	
	(> 25 to ≤ 32) kg	420 mg	
	(> 32 to ≤ 50) kg	830 mg	
	(> 50 to ≤ 80) kg	850 mg	
	(> 80 to ≤ 100) kg	870 mg	
	(> 100 to ≤ 150) kg	930 mg	
	(> 150 to ≤ 200) kg	1000 mg	
	(> 200 to ≤ 300) kg	1200 mg	
	(> 300 to ≤ 400) kg	8200 mg	
	(> 400 to ≤ 500) kg	8300 mg	
	(> 500 to ≤ 600) kg	8400 mg	
	(> 600 to ≤ 700) kg	0.088 kg	NIST F weights
	(> 700 to ≤ 800) kg	0.10 kg	
	(> 800 to ≤ 1000) kg	0.13 kg	
	(> 1000 to ≤ 1500) kg	0.19 kg	
	(> 1500 to ≤ 2000) kg	0.25 kg	
	(> 2000 to ≤ 2500) kg	0.31 kg	
	(> 2500 to ≤ 3000) kg	0.38 kg	
	(> 3000 to ≤ 4000) kg	0.50 kg	
	(> 4000 to ≤ 5000) kg	0.63 kg	
	(> 5000 to ≤ 6000) kg	1.1 kg	
	(> 6000 to ≤ 8000) kg	1.3 kg	
	(> 8000 to ≤ 10 000) kg	1.5 kg	
	(> 10 000 to ≤ 15 000) kg	2.5 kg	
	(> 15 000 to ≤ 20 000) kg	3.0 kg	
	(> 20 000 to ≤ 25 000) kg	5.1 kg	
(> 25 000 to ≤ 30 000) kg	9.0 kg		
(> 30 000 to ≤ 40 000) kg	9.6 kg		
(> 40 000 to ≤ 50 000) kg	10 kg		
(> 50 000 to ≤ 60 000) kg	11 kg		
(> 60 000 to ≤ 80 000) kg	13 kg		
(> 80 000 to ≤ 100 000) kg	15 kg		
(> 100 000 to ≤ 120 000) kg	17 kg		
(> 120 000 to ≤ 140 000) kg	19 kg		

Parameter/Equipment	Range	CMC <sup>2,5</sup> ( $\pm$ )	Comments
Balances and Scales, Avoirdupois <sup>3</sup>	$\leq 0.2$ lb $(> 0.2$ to $\leq 0.5)$ lb $(> 0.5$ to $\leq 1)$ lb $(> 1$ to $\leq 2)$ lb $(> 2$ to $\leq 3)$ lb $(> 3$ to $\leq 4)$ lb $(> 4$ to $\leq 5)$ lb $(> 5$ to $\leq 6)$ lb $(> 6$ to $\leq 7)$ lb $(> 7$ to $\leq 7.5)$ lb $(> 7.5$ to $\leq 8)$ lb $(> 8$ to $\leq 9)$ lb $(> 9$ to $\leq 10)$ lb $(> 10$ to $\leq 12)$ lb $(> 12$ to $\leq 15)$ lb $(> 15$ to $\leq 20)$ lb $(> 20$ to $\leq 25)$ lb $(> 25$ to $\leq 30)$ lb $(> 30$ to $\leq 40)$ lb $(> 40$ to $\leq 50)$ lb $(> 50$ to $\leq 60)$ lb $(> 60$ to $\leq 70)$ lb $(> 70$ to $\leq 75)$ lb $(> 75$ to $\leq 80)$ lb $(> 80$ to $\leq 100)$ lb $(> 100$ to $\leq 120)$ lb $(> 120$ to $\leq 150)$ lb $(> 150$ to $\leq 200)$ lb $(> 200$ to $\leq 250)$ lb $(> 250$ to $\leq 300)$ lb $(> 300$ to $\leq 400)$ lb $(> 400$ to $\leq 500)$ lb $(> 500$ to $\leq 700)$ lb $(> 700$ to $\leq 1000)$ lb $(> 1000$ to $\leq 1500)$ lb $(> 1500$ to $\leq 2000)$ lb $(> 2000$ to $\leq 2500)$ lb $(> 2500$ to $\leq 3000)$ lb $(> 3000$ to $\leq 4000)$ lb $(> 4000$ to $\leq 5000)$ lb $(> 5000$ to $\leq 7000)$ lb $(> 7000$ to $\leq 10\ 000)$ lb $(> 10\ 000$ to $\leq 15\ 000)$ lb $(> 15\ 000$ to $\leq 20\ 000)$ lb $(> 20\ 000$ to $\leq 25\ 000)$ lb $(> 25\ 000$ to $\leq 30\ 000)$ lb $(> 30\ 000$ to $\leq 40\ 000)$ lb $(> 40\ 000$ to $\leq 50\ 000)$ lb $(> 50\ 000$ to $\leq 60\ 000)$ lb	0.000 17 lb 0.000 20 lb 0.000 24 lb 0.000 29 lb 0.000 55 lb 0.000 64 lb 0.000 73 lb 0.000 84 lb 0.000 94 lb 0.0011 lb 0.0013 lb 0.0014 lb 0.0015 lb 0.0017 lb 0.0024 lb 0.0029 lb 0.0035 lb 0.0040 lb 0.0051 lb 0.0063 lb 0.0084 lb 0.0094 lb 0.010 lb 0.013 lb 0.015 lb 0.017 lb 0.020 lb 0.048 lb 0.051 lb 0.055 lb 0.095 lb 0.10 lb 0.12 lb 0.15 lb 0.45 lb 0.48 lb 0.51 lb 0.55 lb 0.64 lb 0.73 lb 1.2 lb 1.5 lb 4.5 lb 4.8 lb 5.1 lb 5.5 lb 6.4 lb 7.3 lb 8.4 lb	NIST F weights

Parameter/Equipment	Range	CMC <sup>2,5</sup> (±)	Comments
Balances and Scales, Avoirdupois <sup>3</sup> (cont)	(> 60 000 to ≤ 70 000) lb (> 70 000 to ≤ 100 000) lb (> 100 000 to ≤ 120 000) lb	18 lb 20 lb 22 lb	NIST F weights
Tank Scales, Metric <sup>3</sup>	(≥ 1000 to ≤ 4000) kg (> 4000 to ≤ 8000) kg (> 8000 to ≤ 12 000) kg (> 12 000 to ≤ 16 000) kg (> 16 000 to ≤ 24 000) kg (> 24 000 to ≤ 32 000) kg	0.99 kg 1.7 kg 2.3 kg 2.8 kg 4.2 kg 5.0 kg	RapidCal™ Tank Scale Calibration
Tank Scales, Avoirdupois <sup>3</sup>	(≥ 2200 to ≤ 8800) lb (> 8800 to ≤ 17 600) lb (> 17 600 to ≤ 26 400) lb (> 26 400 to ≤ 35 000) lb (> 35 000 to ≤ 53 000) lb (> 53 000 to ≤ 70 000) lb	2.2 lb 3.7 lb 5.1 lb 6.7 lb 9.1 lb 11 lb	RapidCal™ Tank Scale Calibration

<sup>1</sup> This laboratory offers commercial calibration service and field calibration service.

<sup>2</sup> Calibration and Measurement Capability Uncertainty (CMC) is the smallest uncertainty of measurement that a laboratory can achieve within its scope of accreditation when performing more or less routine calibrations of nearly ideal measurement standards or nearly ideal measuring equipment. CMCs represent expanded uncertainties expressed at approximately the 95 % level of confidence, usually using a coverage factor of  $k = 2$ . The actual measurement uncertainty of a specific calibration performed by the laboratory may be greater than the CMC due to the behavior of the customer's device and to influences from the circumstances of the specific calibration.

<sup>3</sup> Field calibration service is available for this calibration. Please note the actual measurement uncertainties achievable on a customer's site can normally be expected to be larger than the CMC found on the A2LA Scope. Allowance must be made for aspects such as the environment at the place of calibration and for other possible adverse effects such as those caused by transportation of the calibration equipment. The usual allowance for the actual uncertainty introduced by the item being calibrated, (e.g. resolution) must also be considered and this, on its own, could result in the actual measurement uncertainty achievable on a customer's site being larger than the CMC.

<sup>4</sup> This accreditation includes those field service representatives located in the United States and Canada reporting to Mettler Toledo (Industrial), Columbus, OH.

<sup>5</sup> CMC components that can be reasonably attributed to the Unit Under Test have not been utilized in the calculation of the CMC value for this measurement parameter.

<sup>6</sup> This scope meets A2LA's *P112 Flexible Scope Policy*.





# Accredited Laboratory

A2LA has accredited

## METTLER TOLEDO (INDUSTRIAL)

*Columbus, OH*

for technical competence in the field of

## Calibration

This laboratory is accredited in accordance with the recognized International Standard ISO/IEC 17025:2017 *General requirements for the competence of testing and calibration laboratories*. This laboratory also meets the requirements of ANSI/NC SL Z540-1-1994 and R205 – Specific Requirements: Calibration Laboratory Accreditation Program. This accreditation demonstrates technical competence for a defined scope and the operation of a laboratory quality management system (refer to joint ISO-ILAC-IAF Communiqué dated April 2017).



Presented this 3<sup>rd</sup> day of February 2023.

A blue ink signature of Mr. Trace McInturff.

Mr. Trace McInturff, Vice President, Accreditation Services  
For the Accreditation Council  
Certificate Number 1902.01  
Valid to April 30, 2025

*For the calibrations to which this accreditation applies, please refer to the laboratory's Calibration Scope of Accreditation.*



SCOPE OF ACCREDITATION TO ISO/IEC 17025:2017  
& ANSI/NCSL Z540-1-1994

METTLER TOLEDO, INC  
2915 Argentia Road, Unit 6  
Mississauga, Ontario, CANADA L5N 8G6  
Tamara Rogers-McCrossan Phone: +1-416-708-7781

CALIBRATION

Valid To: January 31, 2025

Certificate Number: 1788.02

In recognition of the successful completion of the A2LA evaluation process, accreditation is granted to this laboratory to perform the following calibrations<sup>1</sup>:

I. Fluid Quantities

Parameter/Equipment	Range	CMC <sup>2</sup> (±)	Comments
Piston Operated Volumetric Apparatuses (POVA): Piston Pipettes, Piston Burettes, Dilutors & Dispensers <sup>3</sup>	Up to 2 µL	0.016 µL	Gravimetric method per ISO-8655-6
	(> 2 to 10) µL	0.022 µL	
	(> 10 to 20) µL	0.044 µL	
	(> 20 to 100) µL	0.27 µL	
	(> 100 to 200) µL	0.38 µL	
	(> 200 to 1000) µL	2.2 µL	
	(> 1000 to 2000) µL	3.5 µL	
	(> 2000 to 5000) µL	7.1 µL	
	(> 5000 to 10 000) µL	14 µL	
(> 10 000 to 20 000) µL	23 µL		

<sup>1</sup> This laboratory offers commercial calibration service.

<sup>2</sup> Calibration and Measurement Capability Uncertainty (CMC) is the smallest uncertainty of measurement that a laboratory can achieve within its scope of accreditation when performing more or less routine calibrations of nearly ideal measurement standards or nearly ideal measuring equipment. CMCs represent expanded uncertainties expressed at approximately the 95 % level of confidence, usually using a coverage factor of  $k = 2$ . The actual measurement uncertainty of a specific calibration performed by the laboratory may be greater than the CMC due to the behavior of the customer's device and to influences from the circumstances of the specific calibration.

<sup>3</sup> Field calibration service is available for this calibration. Please note the actual measurement uncertainties achievable on a customer's site can normally be expected to be larger than the CMC found on the A2LA Scope. Allowance must be made for aspects such as the environment at the place of calibration and for other possible adverse effects such as those caused by transportation of the calibration equipment. The usual allowance for the actual uncertainty introduced by the item being calibrated, (e.g. resolution) must also be considered and this, on its own, could result in the actual measurement uncertainty achievable on a customer's site being larger than the CMC.





# Accredited Laboratory

A2LA has accredited

**METTLER TOLEDO, INC**

*Mississauga, Ontario, CANADA*

for technical competence in the field of

**Calibration**

This laboratory is accredited in accordance with the recognized International Standard ISO/IEC 17025:2017 General requirements for the competence of testing and calibration laboratories. This laboratory also meets ANSI/NCSL Z540-1-1994 and R205 – Specific Requirements: Calibration Laboratory Accreditation Program. This accreditation demonstrates technical competence for a defined scope and the operation of a laboratory quality management system (refer to joint ISO-ILAC-IAF Communiqué dated April 2017).



Presented this 26<sup>th</sup> day of May 2023.

A blue ink signature of Mr. Trace McInturff.

Mr. Trace McInturff, Vice President, Accreditation Services  
For the Accreditation Council  
Certificate Number 1788.02  
Valid to January 31, 2025

*For the calibrations to which this accreditation applies, please refer to the laboratory's Calibration Scope of Accreditation.*



Document Code	NQ0001		
Document Name	Quality Manual MT-NA Mettler-Toledo, LLC & MT-CDN (Mettler Toledo, Inc.) Canada		
Revision:	10	Date:	9.19.2022
Replaces:	NQ0001, Rev 09, 3.20.2019		

## 1.0 Introduction

Founded 1901 as Toledo Scale Company, Inc today's METTLER TOLEDO is a global manufacturer and marketer of precision instruments for use in laboratory, industrial and food retailing applications. In addition to a broad product offering, the Company has one of the largest global sales & service organizations among precision instrument companies.

The METTLER TOLEDO North America (MT-NA) entity is responsible for operating the marketing, sales & service sub-groups of the Laboratory, Industrial, and Retail divisional business areas in the U.S. & Canada.

This Organization provides Calibration Services of precision weighing instruments & analytical devices and Product Sales via catalog at Mettler-Toledo, LLC. Product specific information can be found at [www.us.mt.com](http://www.us.mt.com). Under Mettler-Toledo, LLC, the METTLER TOLEDO North America (MT-NA) entity is responsible for operating the marketing, sales & service sub-groups of the Laboratory, Industrial, and Retail divisional business areas in the U.S. & Canada. MT-NA's Laboratory and Industrial business operations are controlled by an ISO 9001-registered QMS.

No manufacturing, production, programming, or design is performed at this site. Mettler-Toledo has multiple global manufacturing facilities. All of the Company's manufacturing facilities in Europe, the United States, and China are ISO 9001 registered. The METTLER TOLEDO Company's various organizations operate under their own Quality Management Systems (QMS) pertaining to their specific sub-groups or divisional business areas.

This Quality Manual serves as the basis for the Quality System for the following organizations in METTLER TOLEDO North American (MT-NA) Business Areas: **Industrial** and **Laboratory**. The Quality Manual defines the policies and references procedures required for controlling activities that affect product and service quality.

MT-NA's Laboratory and Industrial business operations are controlled by an ISO 9001 registered QMS. These two business areas are also ISO 17025 accredited by A2LA. Our field service operations use only certified weights, traceable to national standards; the National Institute of Standards and Technology (NIST) in the U.S. and Standards Council of Canada (SCC) in Canada.

This Quality Manual and Quality System meets the intent of the ISO 9001-2015 standard as a model for quality assurance in service back office, installation, and servicing. The compliance with these standards are certified by a third party registrar. All employees at METTLER TOLEDO have responsibility for implementing the policies and procedures outlined or referenced in this Quality Manual. The fundamental objective of METTLER TOLEDO is to supply products and services that meet our customers' requirements. This manual supports that objective.

## 2.0 Scope of Certification:

Site Name Location	Site Address	Site Scope
Mettler-Toledo, LLC	1900 POLARIS PARKWAY COLUMBUS, OH 43240 USA	Marketing, Sales, Installation and Service of Balance, Analytical Instruments, Scales, and Weighing Systems for the Industrial and Laboratory Market
Mettler-Toledo, LLC -Worthington, OH	1150 Dearborn Dr. Worthington, OH 43085 USA	Order Management and Service of Balances, Analytical Instruments, Scales, and Weighing Systems for the Industrial and Laboratory Market
Mettler-Toledo Inc. (Canada)	2915 Argentia Rd Mississauga, ON L5N 8G6 Canada	Marketing, sales, distribution, installation and service of balances, analytical instruments, scales ,pipettes and weighing systems for the industrial and laboratory market

## 3.0 Scope of Quality Management System:

The exclusion of **Product Design** has been identified and the justification is that sister METTLER TOLEDO facilities perform all aspects of design and provide MT-NA with product, therefore this facility is not design responsible. The Quality Manual describes and defines the Quality Management System which has been designed to support the business objectives of Mettler-Toledo, LLC. and to comply with the requirements of the ISO 9001 standard.

The three facilities in the table above are certified to the current ISO 9001 standard and share the same quality manual under the same certification and scope. This organization additionally holds three ISO 17025 Certificates.

<i>Certificate</i>	<i>Registrar</i>
ISO 9001:2015	Bureau Veritas (BVC) Since 1993
ISO/IEC 17025:2017	A2LA - Lab
ISO/IEC 17025:2017	A2LA - Industrial
ISO/IEC 17025:2017	A2LA - Pipettes
Please visit our <b>Certifications &amp; Accreditations page</b> to download current certificates --> <a href="#">Here</a>	

You can always find the most current Current Quality Self-Assessment Packet --> [here](#). This will have all ISO Certificates and much more all in one file. This quality Self Assessment packet is provided to customers regarding our QMS system as it applies to requests to fill out questionnaires, surveys, or other requests to audit our company.

#### 4.0 Quality Policy:

<b>Quality Policy</b>	
<b>Each of us supports a continuously improving organization that is committed to deliver defect-free work, on time, to all of our customers.</b>	
Our Goal: Satisfy every customer, every time.	
	

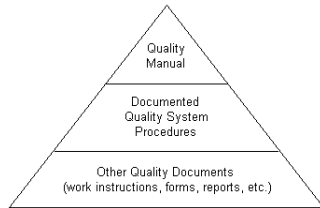
<b>Each of us</b>	All employees in all functions
<b>Continuous Improvement</b>	Ongoing effort to improve products, services, and processes
<b>Defect-free work</b>	Live up to the promise of our brand
<b>On Time</b>	Meeting our customer's expectations
<b>All customers</b>	End users, Channel Partners, Internal, PO's

\*\*\*METTLER TOLEDO is additionally committed to Meeting Measurement Canada requirements\*\*\*

#### 5.0 Quality Objectives:

- ◆ To provide the appropriate levels of resources to support customer and/or regulatory expectations and requirements. This will be completed by developing the framework for establishing and reviewing measurable quality objectives across all areas of the organization.
- ◆ Individual Employee Objectives that support the Quality Management System
- ◆ Provide effortless experiences to our customers and through those positive experiences, each of those customers becomes a promotor of Mettler Toledo, and shares the details of those positive experiences with their friends & colleagues.

#### 6.0 Quality Management System (QMS) Documentation & Structure (three level approach):



Level 1: Quality Manual

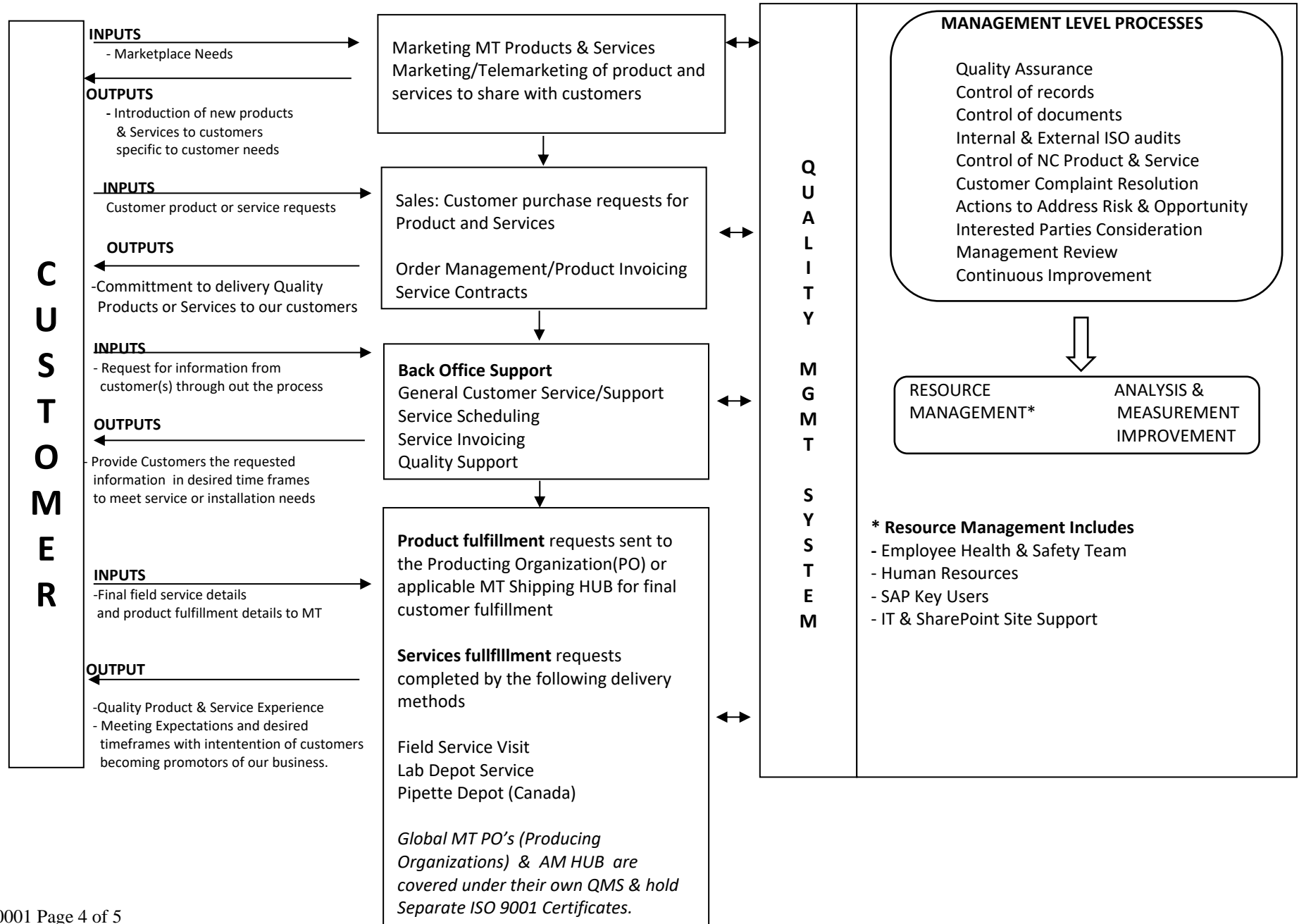
Level 2: Documented Quality System Procedures

Level 3: Documents (Work Instructions, Forms, Tables etc)

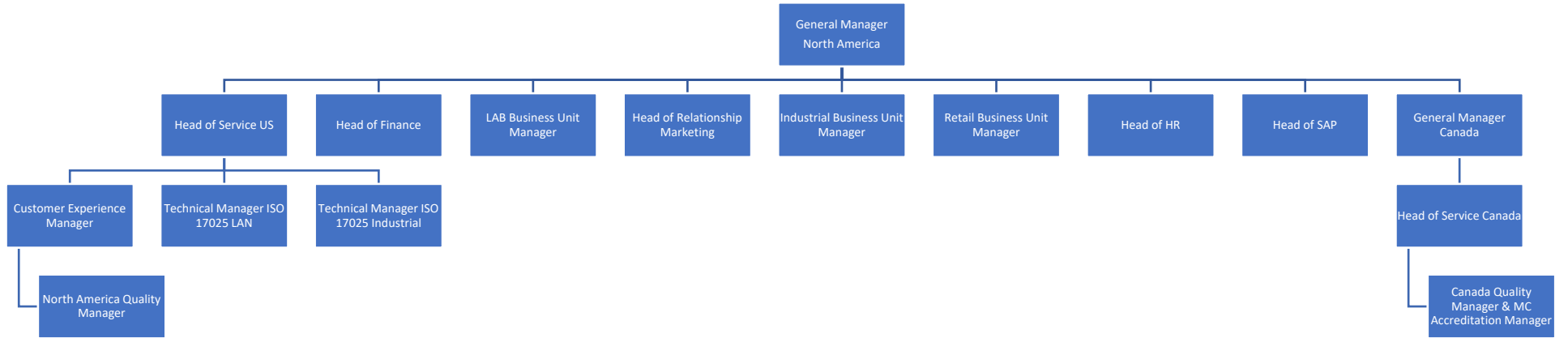
All QMS Documentation is safeguarded and accessible to all MT employees via an internal SharePoint site.

**7.0 Processes** This Quality Management System map is intended to demonstrate the the Inputs & Outputs, as well as the linkage & interactions needed for the Quality Management System.

**MT-NA Mettler-Toledo, LLC & MT-CDN (Mettler Toledo, Inc.) Canada Processes**



## 8.0 Organizational Structure



Brian Orr

Quality Manager - MT-NA Mettler-Toledo, LLC

[Quality.MTNA@mt.com](mailto:Quality.MTNA@mt.com)

1-800-638-8537



# CERTIFICATE OF LIABILITY INSURANCE

DATE (MM/DD/YYYY)

07/06/2023

THIS CERTIFICATE IS ISSUED AS A MATTER OF INFORMATION ONLY AND CONFERS NO RIGHTS UPON THE CERTIFICATE HOLDER. THIS CERTIFICATE DOES NOT AFFIRMATIVELY OR NEGATIVELY AMEND, EXTEND OR ALTER THE COVERAGE AFFORDED BY THE POLICIES BELOW. THIS CERTIFICATE OF INSURANCE DOES NOT CONSTITUTE A CONTRACT BETWEEN THE ISSUING INSURER(S), AUTHORIZED REPRESENTATIVE OR PRODUCER, AND THE CERTIFICATE HOLDER.

**IMPORTANT: If the certificate holder is an ADDITIONAL INSURED, the policy(ies) must have ADDITIONAL INSURED provisions or be endorsed. If SUBROGATION IS WAIVED, subject to the terms and conditions of the policy, certain policies may require an endorsement. A statement on this certificate does not confer rights to the certificate holder in lieu of such endorsement(s).**

<b>PRODUCER</b> MARSH USA LLC. 325 John H. McConnell Boulevard, Suite 350 Columbus, OH 43215	<b>CONTACT NAME:</b> Marsh   U.S. Operations		
	<b>PHONE (A/C. No. Ext):</b> (866) 966-4664	<b>FAX (A/C. No.):</b>	
	<b>E-MAIL ADDRESS:</b> Columbus.CertRequest@marsh.com		
	<b>INSURER(S) AFFORDING COVERAGE</b>		
	<b>INSURER A :</b> XL Insurance America, Inc.		NAIC # 24554
<b>INSURED</b> Mettler-Toledo International Inc. and All of its Divisions and Subsidiaries 1900 Polaris Parkway Columbus, OH 43240	<b>INSURER B :</b> Arch Insurance Company		11150
	<b>INSURER C :</b> Arch Indemnity Insurance Company		30830
	<b>INSURER D :</b>		
	<b>INSURER E :</b>		
	<b>INSURER F :</b>		

**COVERAGES**                                      **CERTIFICATE NUMBER:** CLE-006455389-17                                      **REVISION NUMBER:** 11

THIS IS TO CERTIFY THAT THE POLICIES OF INSURANCE LISTED BELOW HAVE BEEN ISSUED TO THE INSURED NAMED ABOVE FOR THE POLICY PERIOD INDICATED. NOTWITHSTANDING ANY REQUIREMENT, TERM OR CONDITION OF ANY CONTRACT OR OTHER DOCUMENT WITH RESPECT TO WHICH THIS CERTIFICATE MAY BE ISSUED OR MAY PERTAIN, THE INSURANCE AFFORDED BY THE POLICIES DESCRIBED HEREIN IS SUBJECT TO ALL THE TERMS, EXCLUSIONS AND CONDITIONS OF SUCH POLICIES. LIMITS SHOWN MAY HAVE BEEN REDUCED BY PAID CLAIMS.

INSR LTR	TYPE OF INSURANCE	ADDL INSD	SUBR WVD	POLICY NUMBER	POLICY EFF (MM/DD/YYYY)	POLICY EXP (MM/DD/YYYY)	LIMITS	
A	<input checked="checked" type="checkbox"/> <b>COMMERCIAL GENERAL LIABILITY</b> <input type="checkbox"/> CLAIMS-MADE <input checked="checked" type="checkbox"/> OCCUR <input checked="checked" type="checkbox"/> Contractual Liability  GEN'L AGGREGATE LIMIT APPLIES PER: <input checked="checked" type="checkbox"/> POLICY <input type="checkbox"/> PRO-JECT <input type="checkbox"/> LOC OTHER:			US00005996LI23A	07/01/2023	07/01/2024	EACH OCCURRENCE	\$ 1,000,000
							DAMAGE TO RENTED PREMISES (Ea occurrence)	\$ 100,000
							MED EXP (Any one person)	\$ 5,000
							PERSONAL & ADV INJURY	\$ 1,000,000
							GENERAL AGGREGATE	\$ 1,000,000
							PRODUCTS - COMP/OP AGG	\$ 1,000,000
								\$
B	<input checked="checked" type="checkbox"/> <b>AUTOMOBILE LIABILITY</b> <input checked="checked" type="checkbox"/> ANY AUTO <input type="checkbox"/> OWNED AUTOS ONLY <input type="checkbox"/> SCHEDULED AUTOS <input checked="checked" type="checkbox"/> HIRED AUTOS ONLY <input checked="checked" type="checkbox"/> NON-OWNED AUTOS ONLY DED: \$400,000			41CAB1004006 (AOS) 41CAB1004106 (MA) DED: \$400,000	07/01/2023	07/01/2024	COMBINED SINGLE LIMIT (Ea accident)	\$ 2,000,000
							BODILY INJURY (Per person)	\$
							BODILY INJURY (Per accident)	\$
							PROPERTY DAMAGE (Per accident)	\$
								\$
A	<input checked="checked" type="checkbox"/> <b>UMBRELLA LIAB</b> <input checked="checked" type="checkbox"/> OCCUR <input type="checkbox"/> EXCESS LIAB <input type="checkbox"/> CLAIMS-MADE DED <input checked="checked" type="checkbox"/> RETENTION \$ 10,000			US00005997LI23A	07/01/2023	07/01/2024	EACH OCCURRENCE	\$ 1,000,000
							AGGREGATE	\$ 1,000,000
								\$
C	<input checked="checked" type="checkbox"/> <b>WORKERS COMPENSATION AND EMPLOYERS' LIABILITY</b> ANY PROPRIETOR/PARTNER/EXECUTIVE OFFICER/MEMBER EXCLUDED? (Mandatory in NH) If yes, describe under DESCRIPTION OF OPERATIONS below	Y / N <input checked="checked" type="checkbox"/> N <input type="checkbox"/> Y N / A		44WC11004506 (AOS)	07/01/2023	07/01/2024	<input checked="checked" type="checkbox"/> PER STATUTE <input type="checkbox"/> OTH-ER	
				41WC11004406 (FL)	07/01/2023	07/01/2024		E.L. EACH ACCIDENT
				SIR: \$400,000				\$ 1,000,000
								\$ 1,000,000

**DESCRIPTION OF OPERATIONS / LOCATIONS / VEHICLES (ACORD 101, Additional Remarks Schedule, may be attached if more space is required)**

EVIDENCE OF COVERAGE

**CERTIFICATE HOLDER**

Mettler-Toledo International Inc. and  
All of its Divisions and Subsidiaries  
1900 Polaris Parkway  
Columbus, OH 43240

**CANCELLATION**

SHOULD ANY OF THE ABOVE DESCRIBED POLICIES BE CANCELLED BEFORE THE EXPIRATION DATE THEREOF, NOTICE WILL BE DELIVERED IN ACCORDANCE WITH THE POLICY PROVISIONS.

AUTHORIZED REPRESENTATIVE

*Marsh USA LLC*

© 1988-2016 ACORD CORPORATION. All rights reserved.



This is to certify that the Policy(ies) of insurance listed below ("Policy" or "Policies") have been issued to the Named Insured identified below for the policy period(s) indicated. This certificate is issued as a matter of information only and confers no rights upon the Certificate Holder named below other than those provided by the Policy(ies).

Notwithstanding any requirement, term, or condition of any contract or any other document with respect to which this certificate may be issued or may pertain, the insurance afforded by the Policy(ies) is subject to all the terms, conditions, and exclusions of such Policy(ies). This certificate does not amend, extend, or alter the coverage afforded by the Policy(ies). Limits shown are intended to address contractual obligations of the Named Insured.

Limits may have been reduced since Policy effective date(s) as a result of a claim or claims.

<b>Certificate Holder:</b> Mettler-Toledo Inc. 2915 Argenta Rd, Unit 6 Mississauga, ON L5N 8G6	<b>Named Insured and Address:</b> Mettler-Toledo Inc. 2915 Argenta Road, Unit 6 Mississauga, ON L5N 8G6
---	--

**This certificate is issued regarding:**  
Evidence of Insurance

Type(s) of Insurance	Insurer(s)	Policy Number(s)	Effective/Expiry Dates	Sums Insured Or Limits of Liability	
COMMERCIAL GENERAL LIABILITY	XL Specialty Insurance Company	CA00000095LI23A	Jul 01, 2023 to Jul 01, 2024	Each Occurrence	CDN 1,500,000
				Products & Completed Operations Aggregate	CDN 6,000,000
				Personal and Advertising Liability	CDN 1,500,000
				Tenants Legal Liability	CDN 200,000
				Non - Owned Auto	CDN 1,000,000
AUTOMOBILE • OPCF/QEF/SEF - 2, 21b, & 44	Arch Insurance Canada Ltd.	C1CAB53243 05	Jul 01, 2023 to Jul 01, 2024	Third Party Liability	CDN 2,000,000
				Self Insured for Physical Damage	.
EXCESS LIABILITY • Excess of Automobile Policy as shown above.	XL Specialty Insurance Company	US00005997L123A	Jul 01, 2023 to Jul 01, 2024	Limit of Liability	USD 3,000,000

**Additional Information:**

Policy # US00005997L122A placement was made by Marsh US. Marsh Canada Limited has only acted in the role of a consultant to the client with respect to this placement, which is indicated here for your convenience.

**Notice of cancellation:**

Should any of the policies described herein be cancelled before the expiration date thereof, the insurer(s) affording coverage will endeavour to mail 30 days written notice to the certificate holder named herein, but failure to mail such notice shall impose no obligation or liability of any kind upon the insurer(s) affording coverage, their agents or representatives, or the issuer of this certificate.

<b>Marsh Canada Limited</b> 120 Bremner Boulevard Suite 800 Toronto, ON M5J 0A8 Telephone: 1-844-990-2378 Fax: - fgs.cert@marsh.com	Marsh Canada Limited   By: _____ Clement Humes
---	---

# Request for Taxpayer Identification Number and Certification

Go to [www.irs.gov/FormW9](http://www.irs.gov/FormW9) for instructions and the latest information.

**Give form to the  
requester. Do not  
send to the IRS.**

**Before you begin.** For guidance related to the purpose of Form W-9, see *Purpose of Form*, below.

Print or type. See Specific Instructions on page 3.	<b>1</b> Name of entity/individual. An entry is required. (For a sole proprietor or disregarded entity, enter the owner's name on line 1, and enter the business/disregarded entity's name on line 2.) <div style="text-align: center; font-weight: bold; font-size: 1.2em;">METTLER-TOLEDO INTERNATIONAL, INC</div>	
	<b>2</b> Business name/disregarded entity name, if different from above. <div style="text-align: center; font-weight: bold; font-size: 1.2em;">METTLER-TOLEDO, LLC</div>	
	<b>3a</b> Check the appropriate box for federal tax classification of the entity/individual whose name is entered on line 1. Check only <b>one</b> of the following seven boxes. <input type="checkbox"/> Individual/sole proprietor <input checked="" type="checkbox"/> C corporation <input type="checkbox"/> S corporation <input type="checkbox"/> Partnership <input type="checkbox"/> Trust/estate <input type="checkbox"/> LLC. Enter the tax classification (C = C corporation, S = S corporation, P = Partnership) . . . . . <b>Note:</b> Check the "LLC" box above and, in the entry space, enter the appropriate code (C, S, or P) for the tax classification of the LLC, unless it is a disregarded entity. A disregarded entity should instead check the appropriate box for the tax classification of its owner. <input type="checkbox"/> Other (see instructions) _____	<b>4</b> Exemptions (codes apply only to certain entities, not individuals; see instructions on page 3): Exempt payee code (if any) <span style="float: right; font-size: 1.2em;"><b>5</b></span>  Exemption from Foreign Account Tax Compliance Act (FATCA) reporting code (if any) <span style="float: right; font-size: 1.2em;"><b>D</b></span>
	<b>3b</b> If on line 3a you checked "Partnership" or "Trust/estate," or checked "LLC" and entered "P" as its tax classification, and you are providing this form to a partnership, trust, or estate in which you have an ownership interest, check this box if you have any foreign partners, owners, or beneficiaries. See instructions . . . . . <input type="checkbox"/>	<i>(Applies to accounts maintained outside the United States.)</i>
	<b>5</b> Address (number, street, and apt. or suite no.). See instructions. <div style="font-weight: bold; font-size: 1.2em;">1900 Polaris Parkway</div>	Requester's name and address (optional)
	<b>6</b> City, state, and ZIP code <div style="font-weight: bold; font-size: 1.2em;">Columbus OH 43240</div>	
	<b>7</b> List account number(s) here (optional)	

## Part I Taxpayer Identification Number (TIN)

Enter your TIN in the appropriate box. The TIN provided must match the name given on line 1 to avoid backup withholding. For individuals, this is generally your social security number (SSN). However, for a resident alien, sole proprietor, or disregarded entity, see the instructions for Part I, later. For other entities, it is your employer identification number (EIN). If you do not have a number, see *How to get a TIN*, later.

Social security number									
or									
Employer identification number									
1	3	-	3	6	6	8	6	4	1

**Note:** If the account is in more than one name, see the instructions for line 1. See also *What Name and Number To Give the Requester* for guidelines on whose number to enter.

## Part II Certification

Under penalties of perjury, I certify that:

1. The number shown on this form is my correct taxpayer identification number (or I am waiting for a number to be issued to me); and
2. I am not subject to backup withholding because (a) I am exempt from backup withholding, or (b) I have not been notified by the Internal Revenue Service (IRS) that I am subject to backup withholding as a result of a failure to report all interest or dividends, or (c) the IRS has notified me that I am no longer subject to backup withholding; and
3. I am a U.S. citizen or other U.S. person (defined below); and
4. The FATCA code(s) entered on this form (if any) indicating that I am exempt from FATCA reporting is correct.

**Certification instructions.** You must cross out item 2 above if you have been notified by the IRS that you are currently subject to backup withholding because you have failed to report all interest and dividends on your tax return. For real estate transactions, item 2 does not apply. For mortgage interest paid, acquisition or abandonment of secured property, cancellation of debt, contributions to an individual retirement arrangement (IRA), and, generally, payments other than interest and dividends, you are not required to sign the certification, but you must provide your correct TIN. See the instructions for Part II, later.

Sign Here	Signature of U.S. person <i>Cornelia Acebedo</i>	Date 4/26/2024
-----------	---	-------------------

## General Instructions

Section references are to the Internal Revenue Code unless otherwise noted.

**Future developments.** For the latest information about developments related to Form W-9 and its instructions, such as legislation enacted after they were published, go to [www.irs.gov/FormW9](http://www.irs.gov/FormW9).

### What's New

Line 3a has been modified to clarify how a disregarded entity completes this line. An LLC that is a disregarded entity should check the appropriate box for the tax classification of its owner. Otherwise, it should check the "LLC" box and enter its appropriate tax classification.

New line 3b has been added to this form. A flow-through entity is required to complete this line to indicate that it has direct or indirect foreign partners, owners, or beneficiaries when it provides the Form W-9 to another flow-through entity in which it has an ownership interest. This change is intended to provide a flow-through entity with information regarding the status of its indirect foreign partners, owners, or beneficiaries, so that it can satisfy any applicable reporting requirements. For example, a partnership that has any indirect foreign partners may be required to complete Schedules K-2 and K-3. See the Partnership Instructions for Schedules K-2 and K-3 (Form 1065).

### Purpose of Form

An individual or entity (Form W-9 requester) who is required to file an information return with the IRS is giving you this form because they

# Mettler-Toledo, LLC

Address 1900 Polaris Parkway, Columbus, OH 43240-4035  
Phone (800) METTLER  
(800) 638-8537  
Fax (614) 438-4900  
[www.mt.com](http://www.mt.com)

May 22, 2023

Dear Valued Customer:

Thank you for your inquiry of METTLER TOLEDO's Business Profile, Size and Certification.

METTLER TOLEDO is a global manufacturer and marketer of precision instruments for use in laboratory, industrial and food retailing applications. METTLER TOLEDO has multiple global manufacturing facilities. All of the Company's manufacturing facilities in Europe, the United States, and China are ISO 9001 registered. In addition to a broad product offering, the Company has one of the largest global sales & service organizations among precision instrument companies.

Under Mettler-Toledo, LLC, the METTLER TOLEDO North America (MT-NA) entity is responsible for operating the marketing, sales & service sub-groups of the Laboratory, Industrial, and Retail divisional business areas in the U.S. & Canada.

Company Legal Name	Mettler-Toledo, LLC
Address	1900 Polaris Parkway Columbus, OH 43240-4035
Telephone	1.800.METTLER (1.800.638.8537)
Fax	614.438.4900
DUNS No.	19-464-9323
FEIN / TIN No.	13-3668641
CAGE Code	12021
Business Size Type	Large Business
Business Ownership	Mettler-Toledo, LLC is wholly owned by Mettler-Toledo International Inc., which is publicly traded on the NYSE as MTD
Special Business Status? (Yes or No)	No. Mettler-Toledo, LLC <b>IS NOT</b> a woman owned, minority owned, veteran owned, disabled person owned or disadvantaged business and does not qualify for any such or similar categories.
Use of Covered Telecommunications Equipment or Services Representation (889)	Mettler-Toledo, LLC <b>will not</b> provide covered telecommunications equipment or services in the U.S.A., or use any equipment, system, or service that uses covered telecommunications equipment or services as a substantial or essential component of any system, or as critical technology as part of any system in the U.S.A.
Current Year W9	See "W9 Information" under Business and Financial --> <a href="#">Here</a>
Banking Information US and Canada	See "Accounting Information US" & "Accounting Information Canada" Under Business and Financial--> <a href="#">Here</a>

Regards

*Damian Hammond*

Damian Hammond  
Credit and Collections Manager  
800.638.8537  
[ar@mt.com](mailto:ar@mt.com)

Mettler-Toledo, LLC's signature is subject to Mettler-Toledo's standard terms and conditions at [www.mt.com/terms](http://www.mt.com/terms)

# Mettler-Toledo, LLC

03/20/2024

Address 1900 Polaris Parkway, Columbus, OH 43240-4035  
Phone (800) METTLER  
(614) 438-4511  
Fax (614) 438-4900  
[www.mt.com](http://www.mt.com)

## Supplier Information

<b>Company Name</b>	Mettler-Toledo, LLC
<b>FEIN for Mettler-Toledo International, Inc</b>	13-3668641
<b>D &amp; B Number</b>	19-464-9323
<b>NAICS Code</b>	333997
<b>Type of Ownership</b>	LLC owned by Public Corporation
<b>Mettler-Toledo Merger Year: 1989</b> (Mettler Instruments company founded in 1945, Toledo Scale company founded in 1901)	1989
<b>Business Description</b>	<a href="http://www.us.mt.com">www.us.mt.com</a>
<b>PO Copy Sent to Email Address</b>	<a href="mailto:labinsidesales@mt.com">labinsidesales@mt.com</a> or <a href="mailto:servicerequests@mt.com">servicerequests@mt.com</a>
<b>Payment terms:</b>	Net 30 days

## Banking Information

<b>Bank Name</b>	JP MORGAN CHASE BANK
<b>Bank Address</b>	131 S. Dearborn, 6 <sup>th</sup> Floor Chicago, Illinois 60603
<b>Branch Name</b>	CHICAGO
<b>Bank Contact Name</b>	Robert Vega
<b>Bank Contact Number</b>	866-954-3718
<b>Account No.</b>	1084367
<b>ABA#-ACH (Routing#)</b>	071000013
<b>ABA#-WIRE</b>	021000021
<b>Wire Swift</b>	CHASUS33
<b>Remittance Email Address</b>	<a href="mailto:achremit@mt.com">achremit@mt.com</a>
<b>Website</b>	<a href="http://www.us.mt.com">www.us.mt.com</a>

### Payment Remit to Address:

Your Remit to address is based on the geographic location of the invoice billing address. Please refer to your invoices for the assigned Remit to address. All Remit to addresses are given below for your reference.

## Remit to Address

Mettler-Toledo, LLC	Mettler-Toledo, LLC	Mettler-Toledo, LLC
22670 Network Place Chicago, IL 60673-1226	PO Box 730867 Dallas, TX 75373-0867	PO Box 100682 Pasadena, CA 91189-0682

## Credit Card Contact Information

<b>Email Address</b>	<a href="mailto:UScreditcards@mt.com">UScreditcards@mt.com</a>	<a href="http://www.mt.com/billpay">www.mt.com/billpay</a>
<b>Contact Number</b>	1-800-638-8537	

**Damian Hammond**  
Credit and Collections Manager  
[Damian.Hammond@mt.com](mailto:Damian.Hammond@mt.com)  
614-438-4705

*Damian Hammond*

**Sajid Momin**  
Manager, Finance/Accounting  
[Sajid.Momin@mt.com](mailto:Sajid.Momin@mt.com)  
+91 22 4291 2307

**METTLER TOLEDO**

03/20/2024

Supplier Information	
Company Name	Mettler-Toledo Inc
Federal ID Number (TIN)	13-3668641
D & B Number	24-784-8013
NAICS Code	333997
Type of Ownership	Corporation
Business License Number	120885710
Business Description	<a href="http://www.ca.mt.com">www.ca.mt.com</a>
GST#	120885710 RT 0001
QST#	1003833557TQ0013
PO Copy Sent to Email Address	<a href="mailto:CanadianSales@mt.com">CanadianSales@mt.com</a>
Mettler-Toledo Inc. Founded in Year	1907
Payment terms	Net 30 days

Banking Information	
Bank Name	JP MORGAN CHASE BANK
Bank Address	66 Wellington Street West Suite 4500, TD Bank Tower Toronto, Ontario, M5K 1E7, Canada
Branch Name	Toronto
Bank Contact Name	Margarita Uribe
Bank Contact Number	312-732-1314
Account No. (CON)	4667498101
Bank#	270
Transit#	00012
Swift Code	CHASCATTCTS
Remittance Email Address	<a href="mailto:cdnremit@mt.com">cdnremit@mt.com</a>
Website	<a href="http://www.ca.mt.com">www.ca.mt.com</a>

Supplier Contact Information	
Contact Name	Damian Hammond
Contact Number	614-438-4511
Invoice Queries: <a href="mailto:AR@mt.com">AR@mt.com</a>	All Billing Questions: <a href="mailto:servicerequests@mt.com">servicerequests@mt.com</a>

Remit to Address
Mettler-Toledo Inc. PO Box 1518, Station A, Toronto, Ontario M5W 3N9

Credit Card Contact Information	
Email Address	<a href="mailto:canadacreditcards@mt.com">canadacreditcards@mt.com</a>
Contact Number	1-800-638-8537

**Damian Hammond**  
Credit and Collections Manager  
[Damian.Hammond@mt.com](mailto:Damian.Hammond@mt.com)  
614-438-4511  
*Damian Hammond*

**Sajid Momin**  
Manager, Finance/Accounting  
[Sajid.Momin@mt.com](mailto:Sajid.Momin@mt.com)  
+91 22 4291 2307



December 8, 2023

**Mettler-Toledo Inc**  
**2915 ARGENTIA RD UNIT 6**  
**MISSISSAUGA, ON L5N8G6, CA**

Dear **Authorized Person**,

In response to your request, please find below the incoming WIRE and ACH instructions that you will need to provide to your counterparties and correspondents who remit funds via WIRE or ACH for credit to your Canadian Dollar (CAD) account with JPMorgan Chase Bank N.A., Toronto Branch.

***For Canadian Dollars:***

---

Pay to (Intermediary Bank):  
(SWIFT field 56A)

Beneficiary Bank:  
Recommended: (SWIFT field 57A)

Beneficiary: (SWIFT field 59)  
[Wire payments may be delayed or rejected due to incomplete details.]

***Message Type 103 – (Wires only to CAD\$ Accounts)***

---

[SWIFT BIC:] **ROYCCAT2**  
Royal Bank of Canada Toronto  
Address: 180 Wellington Street West, Toronto, Ontario M5J 1J1, Canada

[SWIFT BIC:] **CHASCATTCTS**  
JPMorgan Chase Bank N.A., Toronto Branch  
Address: 66 Wellington Street West, Toronto, Ontario M5K 1E7, Canada

**4667498101**  
**Mettler-Toledo Inc**  
**2915 ARGENTIA RD UNIT 6**  
**MISSISSAUGA, ON L5N8G6, CA**

Complete order party/beneficiary information includes: **full account name**, full account number, full beneficiary bank name, the SWIFT BIC code, and full physical address information. A full physical address must include street number, street name, city or town, state or province, country, preferably in the 2-character ISO format. In circumstances where a street number is not assigned to a physical location, a description of the location, such as a building and street name, may be acceptable. A P.O. Box is not acceptable without a full physical address. State or province is also required for all U.S. and Canada addresses and for other countries, where applicable. Some Canadian banks also require the Canadian Clearing Code to avoid delays in processing.

***For ACH Credit:***

---

Pay to:

JPMorgan Chase Bank N.A., Toronto Branch  
Bank No. 0270 - Transit No. 00012

For Further Credit to:

**Mettler-Toledo Inc**  
**4667498101**

Please Note: it is very important that you identify the correct account and routing number applicable to that account for accurate and timely processing of transactions

The information provided in this letter is provided as an accommodation to the inquirer. This letter and any information provided in connection therewith is furnished on the condition that they are strictly confidential, that no liability or responsibility whatsoever in connection therewith shall attach to this Branch or any of its officers, employees or agents, and that any information provided is subject to change without notice.



**Lockbox mail-in and/or courier instructions:**

---

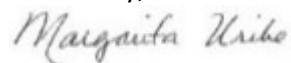
**Mailing Address:**

P.O. Box 1518, Station A  
Toronto, Ontario  
M5W 3N9, Canada

**Courier Address:**

JPMorgan Chase Bank N.A., Toronto Branch  
66 Wellington Street West  
Suite 4500, TD Bank Tower  
Toronto, Ontario  
M5K 1E7, Canada  
Attn: Lockbox Processing  
Mettler-Toledo Inc, Lockbox 1518

Yours truly,



**Margarita Uribe**  
**Executive Director**  
**Commercial Banking International Service**