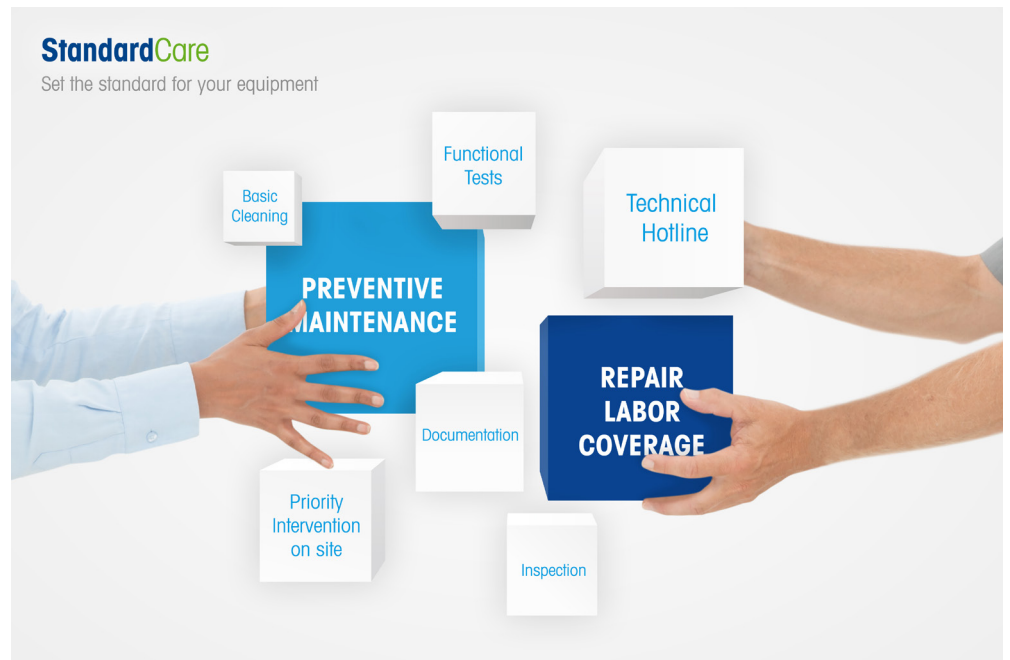


## Standard Care

### Set the standard for your equipment



**Our Standard Care maintenance plan is a safeguard against unexpected repair labor costs, while ensuring peak, continuous performance of your equipment. Profit from priority intervention and access to our technical hotline in case of a needed repair.**

With our Standard Care package, you profit from proactive equipment maintenance for continued uptime and performance. With coverage of labor costs in case of a repair, you will limit exposure to additional expense and keep control of possible risks.

Get the following benefits with Standard Care:

#### **Inspection of your equipment**

Avoid unexpected and costly downtime and repairs with periodic cleaning and testing of mechanical and electronic components.

#### **Equipment operational testing**

Testing is performed to identify and diagnose equipment problems and to confirm that any repair measures have been effective.

#### **Preferred service intervention**

You won't have to wait for the next available service time slot because you receive priority scheduling and technical hotline assistance.

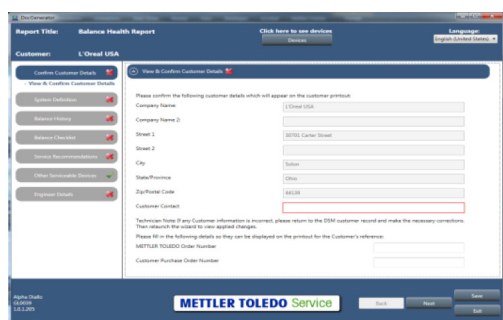
#### **Coverage of labor cost**

Avoid unexpected and unplanned labor costs in case of equipment repairs.

The Standard Care Package provides you with following maintenance coverage:

Coverage		Standard Care
<b>Maintenance</b>	Check the power cable and the power supply for damage	■
	Check proper function of the power switching circuits	■
	Inspect the housing and gaskets for damage, moisture ingress, chemical contamination, cracks and scratches, etc.	■
	Confirm that connectors and interfaces are tight and undamaged and inspect for signs of corrosion or oxidation	■
	Inspect the display, keypad or touchscreen for any damage or missing pixels; check functionality of user interface	■
	Inspect any protective cover, if applicable	■
	Perform external and internal cleaning	■
	Perform operational testing to guarantee correct basic functionality	■
	Recommend replacement of any components that are in poor condition, excessively worn or malfunctioning	■
	<b>Additional benefits</b>	Labor cost coverage in case of needed repairs
Scheduling priority over non-contract customers		■
<b>Options</b>	Calibration and Certificates – selected according to your specific industry and regulatory requirements	

METTLER TOLEDO preventive maintenance services ensure that your equipment is always operating at peak performance. Our standardized programs provide you with traceable results and documentation. We record all inspection details for you correctly and uniformly, at all times – independent of technician or location.



### Automated performance tools

No hassle. No errors. No missing documentation. With our automated reporting system, you are assured of readily available digital documentation and storage.

**METTLER TOLEDO** Service

[www.mt.com/service](http://www.mt.com/service)

For more information



**Mettler-Toledo Ltd.,**  
Leicester, LE4 1AW  
Tel. (0116) 235 70 70,  
Fax (0116) 236 6399

Subject to technical changes  
© 07/2016 Mettler-Toledo AG  
Printed in Switzerland 11795977  
MCG MarCom