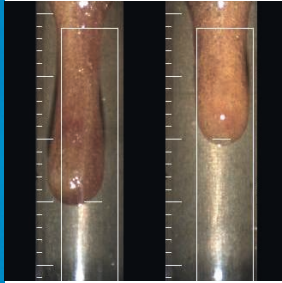


One Click™ Dropping Point DP70 – Reliable and Efficient



Automatic Detection

The DP70 allows for two simultaneous, automatic, unattended dropping and softening point determinations while providing quick and reliable measurements. When completed, the instrument signals the end of measurement with an acoustic tone and displays the measured results.



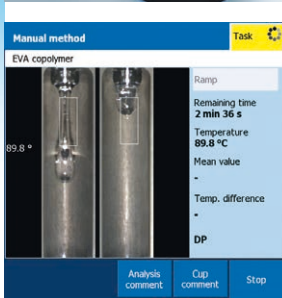
One Click™ User Interface

The large color display and touch screen with intuitive One Click™ user interface minimizes training and provides reliable results. Quick familiarization is guaranteed with the common interface on all METTLER TOLEDO analytical laboratory instruments.



Maximum Efficiency

Included in the standard delivery, the sample preparation kit ensures accurate and quick sample preparation. Disposable cups and glassware, as well as the use of a furnace instead of an oil or water bath, eliminate the need for tedious cleanup. With rapid heating and cooling times, more analyses can be performed.



Color Video Recording

Visual data is stored for all measurements. The high resolution color videos can be conveniently replayed on the instrument at any time, allowing measurement integrity to be verified.



DP70 Dropping Point System

Optimized for testing a variety of samples, the DP70 offers One Click™ dropping and softening points. DP70 allows for duplicate determination and accurate result documentation. The many other advantages available with this Excellence Dropping Point System include:

- High accuracy and repeatability
- Simple and secure operation
- Enhanced export possibilities
- Convenient sample preparation accessories
- Compliance to industry norms and standards

DP70 Functionality Overview

Instrument format	Standalone instrument
Applications	Fully automatic dropping point (DP) and softening point (SP), with length diagrams for SP
One Click™	12 shortcuts per user
Documentation	USB-P25 compact printer, network printer USB memory stick and network connection for import/export and PDF storage
User identification	30 different users, customized user rights/roles
Methods and results	Pre-programmed method templates for automatic DP and SP detection. 60 methods, up to 100 substances Statistics: mean value, difference, outlier result exclusion possible Maximum number of results: 100 Video export, storage, and replay possible on instrument and PC (with diagrams) PDF report generation. Results can be automatically printed or exported to PC or LIMS. 120 minutes of video run time
Calibration and adjustment	Fully automatic optics adjustment (position and brightness) One-, two and three-point temperature adjustment, automatic calibration and calculation of adjustment parameters
Languages	User interface in English, German, French, Spanish, Portuguese, Chinese, Russian, Japanese. Printout in English, German, French
Standard compliance	www.mt.com/mpdp-norms
Service	Professional installation, audit-proof qualification and certification solutions Ensure reliability of Dropping Point Excellence equipment with preventive maintenance plan

DP70 Technical Specifications

Temperatures	Measurement range	Ambient – 400 °C			
	Heating rate	0.1 – 20 ° C/min			
	Accuracy* (30 – 200 °C)	± 0.2 °C			
	Accuracy* (200 °C - max temperature)	± 0.5 °C			
Environment	Ambient temperature	10 – 35 °C			
	Atmospheric humidity	Max 80% (non condensing) at 31 °C, linearly descending to 50% at 40 °C			
Dimensions	Width x length x height / weight	19 x 35 x 23 cm / 4 kg			
	Softening Point cups	Up to 2, 6.35 mm			
	Dropping Point orifices	Up to 2, 2.8 mm			
Terminal	5.7" VGA color touch screen				
	Video: color AVI, 2.5x magnification				
Communication	USB host (printer, memory stick, barcode reader, hub, keyboard, mouse): 3				
	Ethernet (Network and PC Software)				
Application area	Material	Operation mode	Standard	DP70	DP90
	Pitch	SP	ASTM D3104, ASTM D3461	●	●
	Asphalt	SP	ASTM D3461	●	●
	Polyolefins	DP	ASTM D3954	●	●
	Resins	SP	ASTM D6090	●	●
	Waxes	DP	ASTM D3954, Ph. EUR 2.2.17	●	●
	Paraffins	DP	Ph. EUR 2.2.17	●	●
	Binders	SP	DIN 51920, ISO 4625-2	●	●
	Lubricating greases	DP	IP 396	●	●
	Organic powders	DP		●	●
	Vaseline	DP	Ph. EUR 2.2.17	○	●
	Edible fats	DP	AOCS Cc 18-80	○	●
Edible oils	DP	AOCS Cc 18-80	○	●	

* Subject to sample, environment and handling. ● suitable, ○ partly suitable

DP: Dropping point
SP: Softening point

METTLER TOLEDO Group
Laboratory Division: MP/DP
Local contact: www.mt.com/contacts

www.mt.com/MPDP

Visit for more information

Subject to technical changes
© 04/2018 METTLER TOLEDO. All rights reserved.
30412731
MT-NA MarCom