

Comprehensive Equipment Qualification Melting Point Excellence Systems



Compliance

Professional installation and qualification including an initial calibration ensures compliance with quality systems such as GMP or GLP. Comprehensive testing and documentation support the highest compliance requirements of regulatory audits such as USP and EUP.



Accurate results and reliable performance

Operational testing and an initial calibration are performed on site and documented by a factory-trained professional to ensure the correct functioning of the installed instrument.



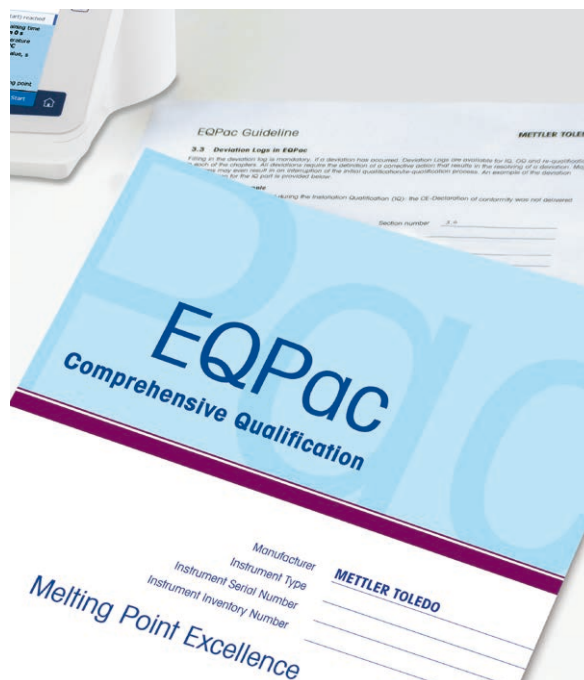
Immediate deployment for increased efficiency

Professional installation and taking-to-operation makes direct deployment of the instrument possible. The operator training included in the qualification process means that measurements can be started immediately.



Tailor-made solutions

For every need, METTLER TOLEDO provides the right solutions for life-long measurement performance, productivity and quality management.




EQPac supports the highest needs for regulatory compliance

Regulatory compliance is a key objective for all pharmaceutical manufacturers and their suppliers. According to GMP, manufacturing processes and analytical methods need to be validated, while at the same time the equipment used for production and quality control requires qualification. In order to support customers in fulfilling this compliance requirement METTLER TOLEDO has created the **EQPac** for Melting Point Excellence systems. The **EQPac** is a service solution specifically designed to address compliance concerns in today's demanding regulatory environment. It provides an onsite, fully-documented, professional installation and qualification service to ensure regulatory compliance and reliable operation.

EQPac

Equipment Qualification for Melting Point Excellence Systems

| MP Systems EQPac | Your needs | EQPac benefits |
|--|---|---|
|  <p>Comprehensive documentation of fully-compliant installation and qualification</p> | Regulatory compliance, e.g. GMP, GLP, Pharmacopoeia | Comprehensive qualification and documentation performed by professionally trained and fully -authorized service experts |
| | Fulfilling documentation requirements | Proven qualification protocols |
| | Accurate and reliable results | Operational testing and initial calibration |
| | Result traceability | Automatic generation of result reports |
| | Continued performance at a consistently high level | Routine testing methods (PQ) and calibration intervals defined |
| | Qualified personnel | Operator training included |
| | Calibration and certification | Includes Initial Calibration |
| | Routine testing (PQ) and maintenance | Support with defining PQ tests and a maintenance schedule |

Elements of Equipment Qualification included in EQPac

IQ

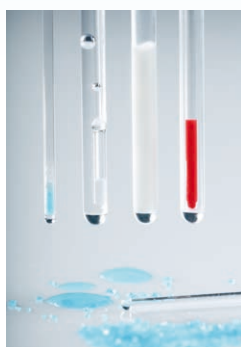
Installation Qualification is documented proof of:

- completeness of the supplied system
- compliance with the required environmental conditions
- correct installation of the instrument and accessories

PQ

Performance Qualification defines the process of:

- regular examination of instrument performance
- demonstrating the continued accuracy and reliability of results
- ensuring and maintaining measurement traceability



OQ

Operational Qualification is demonstration and documented proof of:

- correct operational functionality according to system specifications
- onsite initial calibration
- operator training

Service (MQ)

Service includes:

- definition of preventive maintenance intervals
- determination of calibration intervals
- discussing the need for a service plan including all necessary measures and procedures to keep the instrument well-maintained and calibrated

Order information:

EQPac order number: 30355851

Industry examples

- Pharmaceutical
- Chemical
- Petrochemical
- Academia
- Food & Beverage



METTLER TOLEDO Service

For more information about our Melting Point service offerings go to:

► www.mt.com/mpdp-service



Quality certificate ISO9001
Environment certificate ISO14001
Internet: <http://www.mt.com>
Worldwide service

Subject to technical changes
© 07/2016 Mettler-Toledo GmbH
MarCom Analytical, 51725205B

www.mt.com/mpdp

For more information