

## Data Administration and Data Backup for IND690sys and ID7sx SYS

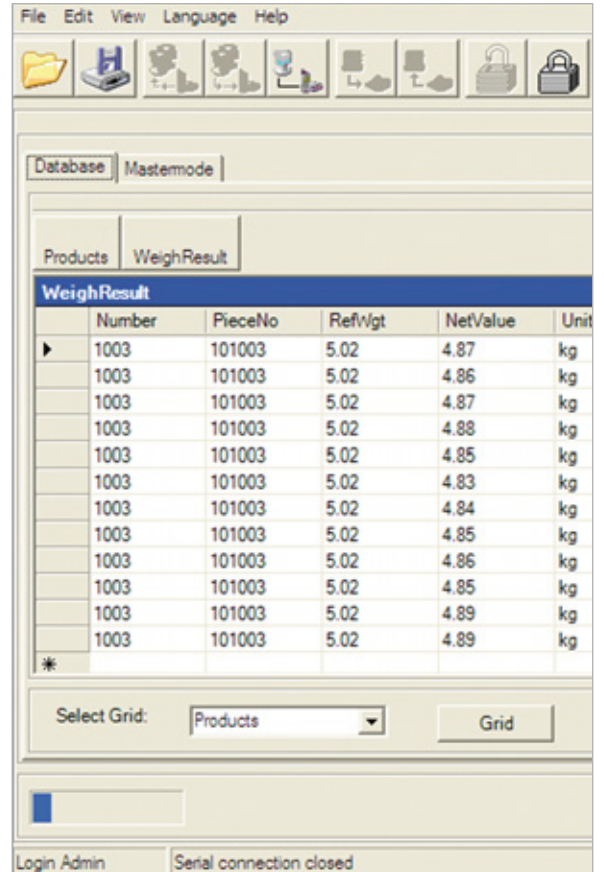
### SysDataManager

SysDataManager is a PC Software that manages table data and mastermode configuration parameters for IND690sys and ID7sx SYS weighing terminals.

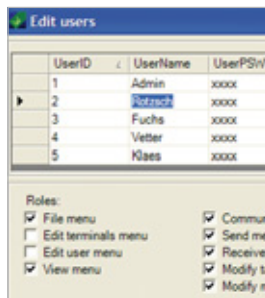
Use RS232 interfaces or Ethernet for direct data transfer. SysDataManager manage up to 16 weighing terminals and provide functions to edit create and delete table data.

SysDataManager displays the product identification and mastermode configuration data of the weighing terminals. Functions to save weighing terminal configuration data as XML files offers possibilities for a quick and easy system recovery.

Don't hesitate to contact your local METTLER TOLEDO organization for questions and specific configurations of SysDataManager.



Quick data transfer:  
Functions to send and receive data via Ethernet (TCP/IP) or serial interface RS232.



Well arranged:  
User management with user-name, password and separate roles.

Do you want to edit product data from your weighing terminals quickly and easily in your office?

Do you want to archive your weighing data on PC?

And do you want to use these data in further customer specific applications?

SysDataManager offers these possibilities!

# SysDataManager

## PC Software

- Functions to edit, create and delete table data (like components) with simple sorting functionality in the data window.
- Functions to send and receive configuration data via Ethernet (TCP/IP) or serial interface RS232. Transfer all or a selectable count of tables, but no separate records.
- Functions to load and save configuration data as XML files.
- Functions to display the mastermode configuration data (edit functionality planned for 4.th quarter 2007).
- User management with username, password and separate roles.
- Reporting functionality planned for 4.th quarter 2007.

### Miscellaneous

- Management up to 16 weighing terminals with SYS software.
- XML files saved with SysDataManager often can be directly used by customer software (e. g. MS-Excel, MS-Access) or database systems (e. g. Oracle).
- Customer specific modifications on MTDBR2 can be implemented by the local Mettler Toledo organization.
- User interface in English or German language. Quick start user guide in English language.

### Requirements

- PC with Ethernet or RS232 interface
- Windows 2000/XP/Vista and .NET Framework v1.1.
- IND690sys or ID7sx SYS Wägeterminal(s) with SYS-Version 1.3. (or higher)

#### Germany

Mettler-Toledo GmbH  
 Ockerweg 3  
 35396 Gießen  
 Tel. (0641) 507 444  
 E-Mail: info.ind.mtd@mt.com

#### Austria

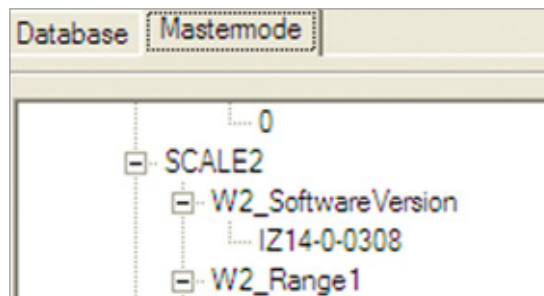
Mettler-Toledo GmbH  
 Südrandstraße 17  
 1230 Wien  
 Tel. 01 604 1980  
 E-Mail: Info-IndustrieSales.MTAT@mt.com

#### Switzerland

Mettler-Toledo GmbH  
 Im Langacher  
 8606 Greifensee  
 Tel. 044 944 45 45  
 E-Mail: Sales.Ind.ch@mt.com

Products		WeighResult	
Products			
	Number	PieceNo	RefWgt
	1001	101001	6,42 g
	1002	101002	6,94 g
▶	1003	101003	5,02 g
	1004	101004	8,40 g

Editing product data



Display of mastermode configuration data

Edit users				
	UserID	UserName	UserPSW	UserRole
	1	Admin	xxxx	64511
▶	2	Rotzsch	xxxx	63993
	3	Fuchs	xxxx	111
	4	Vetter	xxxx	65535
	5	Klaes	xxxx	511

Roles:	
<input checked="" type="checkbox"/> File menu	<input checked="" type="checkbox"/> Communication menu
<input type="checkbox"/> Edit terminals menu	<input checked="" type="checkbox"/> Send menu
<input type="checkbox"/> Edit user menu	<input checked="" type="checkbox"/> Receive menu
<input checked="" type="checkbox"/> View menu	<input checked="" type="checkbox"/> Modify tables
	<input checked="" type="checkbox"/> Modify mastermode

User Management

```

<?xml version="1.0" ?>
- <Database>
  - <Products>
    <Number>1001</Number>
    <PieceNo>101001</PieceNo>
    <RefWgt>6,42 g</RefWgt>
  </Products>
- <Products>

```

Extraction from the XML-file