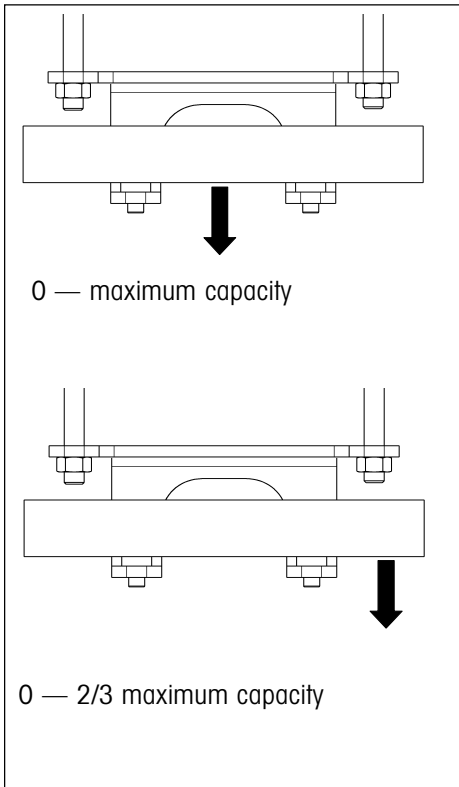


4. DS0150 / DS0300 weighing range

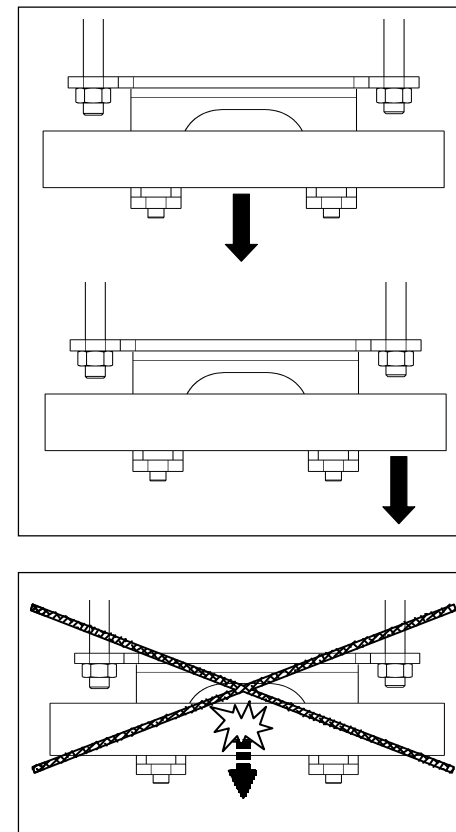


The maximum capacity and hence the weighing range of your overhead rail scale depends on the selected configuration (see configuration data).

- With a **centrally** suspended load, the weighing range comprises the entire range from zero up to the configured maximum capacity.
- If the load is suspended at the **side**, the upper limit of the weighing range is 2/3 the configured maximum capacity.

The scale operates with the specified accuracy within these ranges.

5. DS0150 / DS0300 operating limits



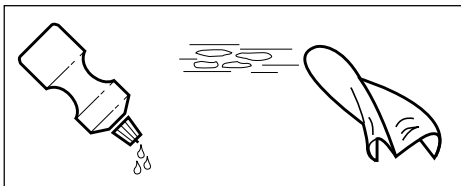
The maximum static safe load, i.e. the maximum admissible load depends on the type of loading.

max. load	DS0150	DS0300
central load	450 kg	450 kg
side load	350 kg	350 kg

Caution
Avoid shocks to the scale.

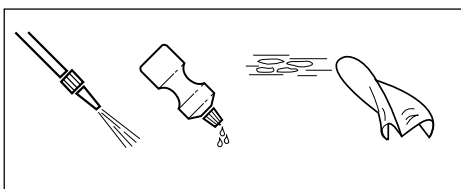
6. Cleaning the DS0150/DS0300 overhead rail scales

Maintenance of the overhead rail scales is limited to their regular cleaning. The procedure depends on the environmental conditions prevailing at the scale location.



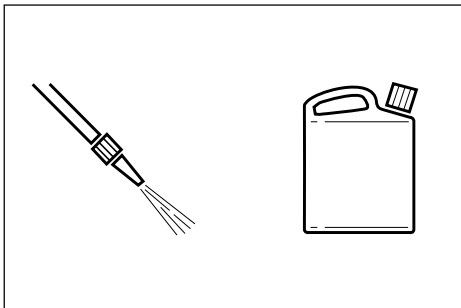
Cleaning the exterior, dry surroundings

- Wipe with a damp cloth.
- Usual household cleaning agents.



Cleaning the exterior, wet room

- Water jet.
- Usual household cleaning agents.



Cleaning the exterior, corrosive surroundings

- It is essential to remove corrosion-initiating substances at regular intervals.
- Use disinfectants and cleaning agents only in accordance with the producer's instructions and stipulations.
- Water jet up to 60 °C.

1. Cautionary notes



Never operate in areas potentially endangered by explosive materials hazarded by gases, vapors, mists and dusts!

To avoid accidents, the enclosure of the junction box must not be opened!

2. Preparatory work



Before starting installation work, you should acquaint yourself with the local conditions. Hence, first study the section "Assessing the supporting structure" in the installation information and the corresponding diagrams dealing with the different types of fastening.

As METTLER TOLEDO has no knowledge of the local conditions, it can accept no responsibility whatsoever for fastening the overhead rail scale to the tubular track support structure.

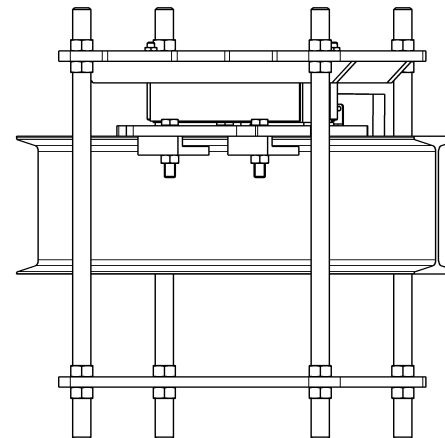
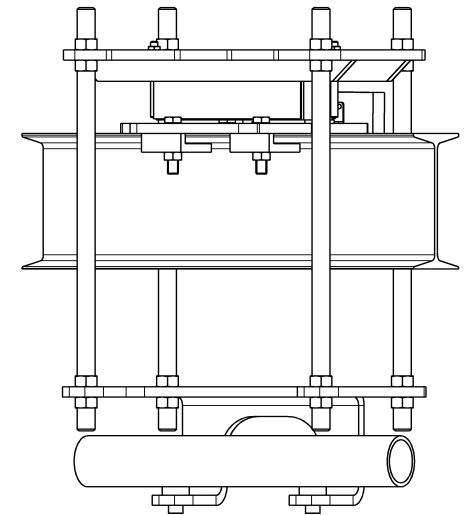
3. Connecting Analog (T) Version

Terminal	Color	Assignment
EXC+ [IN+]	grey	voltage +
SEN+ [IN-]	yellow	control line +
SIG+ [OUT+]	white	signal +
SIG- [OUT-]	brown	signal -
SEN-	green	control line -
EXC-	blue	voltage -

Operating instructions

METTLER TOLEDO MultiRange DS0150 / DS0300 Overhead rail scales

METTLER TOLEDO



22010098

Subject of technical changes © Mettler-Toledo (Albstadt) GmbH 06/03 Printed in Germany 22010098-

Mettler-Toledo (Albstadt) GmbH

D-72458 Albstadt

Tel. ++49-7431-14 0, Fax ++49-7431-14 232

Internet: <http://www.mt.com>