

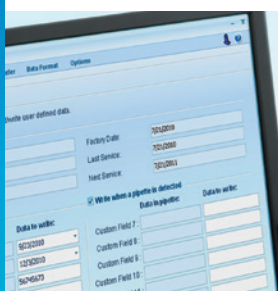
Next Generation Pipette Management

With RFID, Every Pipette Has a Story to Tell



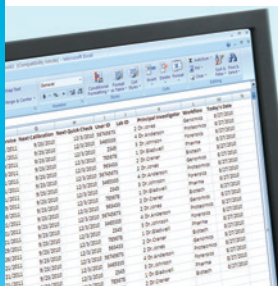
Scan your pipette

LabX uses the RFID reader to access the pipette's data. Once scanned, LabX displays the pipette's complete profile, including its serial number, manufacture and calibration due date, and any unique attributes assigned.



Create custom profiles

Assign unique attributes (like user, lab, inventory number, etc.) using LabX's 12 customizable data fields. Fast access to each pipette's calibration and service data reduces the possibility of performance and/or compliance-related rework.



Export your data

LabX data easily exports to Microsoft Word and Excel, or as text for easy integration with other asset management applications.



LabX pipetting innovation

In addition to delivering consistent, accurate results, RFID tags on the Pipet-Lite XLS help you manage calibration data and workflows to optimize your efficiency.



RFID Reader and LabX™ Software Pipette Management Simplified

Radio Frequency Identification (RFID) is revolutionizing how laboratories track equipment, and Pipet-Lite XLS is the world's first pipette equipped with a RFID tag. With nothing more than an RFID reader and our LabX Direct Pipette-Scan software, you can transform how you manage these important assets:

- Scan a pipette's calibration and service data by setting it on the RFID reader.
- Create custom profiles for each pipette and transfer that data directly to the pipette's RFID tag.
- Integrate your LabX data with third-party asset- and calibration-management applications (LabX data exports easily as Microsoft Excel, Word or text files).

LabX Direct Pipette-Scan™ Software and RFID Reader

Transform your workflow

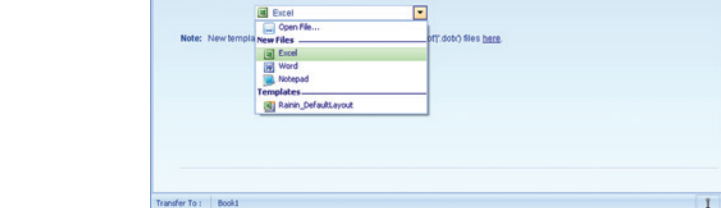
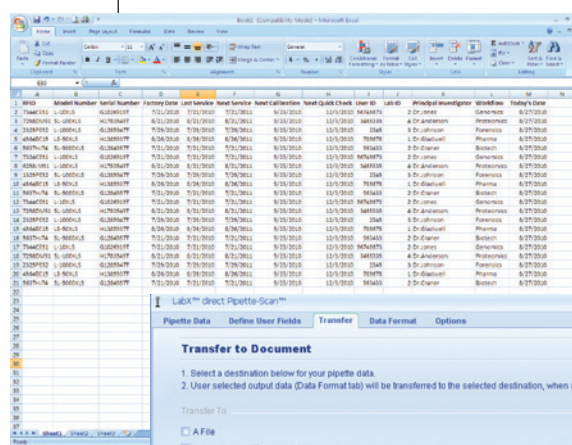
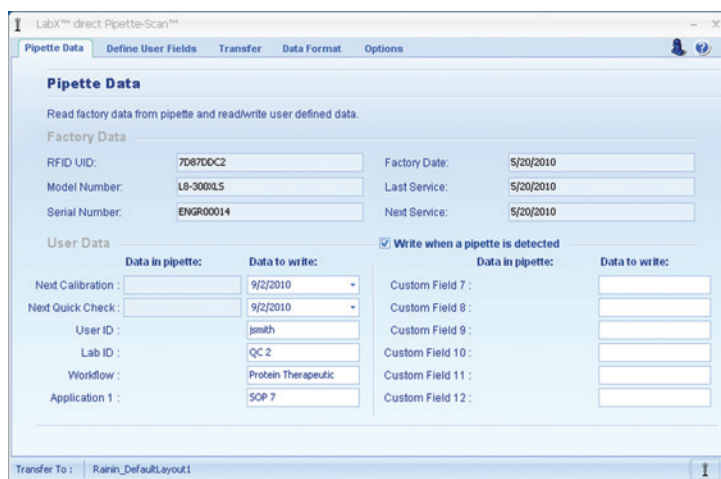
- Quickly check your RFID-equipped pipette for:
 - Calibration date
 - Service date
 - Model and serial numbers
 - Lab and/or user
 - Any custom data you choose
- 12 customizable fields provide maximum flexibility
- Default "Read only" mode prevents pipette data from being overwritten
- Service calibration data is always protected

Leverage your pipette data

- LabX data easily exports to Microsoft Excel and Word, or as a text file
- Upload data to third party calibration/asset management system

Other features

- Supported languages: Chinese, Czech, Danish, English, French, German, Hungarian, Italian, Japanese, Korean, Norwegian, Polish, Russian, Spanish, Swedish
- Supports Microsoft Windows XP/Vista/7



Technical Data

Ordering Information

MT-Order No.	Description
17011966	RFID-KIT RFID Kit including Rainin RFID Reader and LabX Direct Pipette-Scan Software
17011964	RFID-RDR Rainin RFID Reader
17011965	LABX-PIPET LabX Direct Pipette-Scan Software

Specifications

Feature	
RFID Reader Read/Write Operating Range	Up to 5 cm from Pipette's RFID tag
Interface	USB-HID
Compatibility	PC Only (Windows Native USB)
Operating (Ambient) Temperature	-10° to 55° C
Footprint	8 cm x 8 cm

Rainin, Pipet-Lite, XLS and Pipetting 360° are registered trademarks of Mettler-Toledo Rainin, LLC. LabX and Direct Pipette-Scan are trademarks of METTLER TOLEDO Corporation. Windows, Excel, and Word are trademarks of Microsoft Corporation.



Mettler-Toledo Rainin, LLC
 7500 Edgewater Drive, Oakland, CA 94621
 Phone +1 510 564 1600
 Fax +1 510 564 1604

www.mt.com/rainin

For more information

Subject to technical changes
 © 03/2016 Mettler-Toledo Rainin, LLC
 Printed on demand from online content. PB-220 Rev C