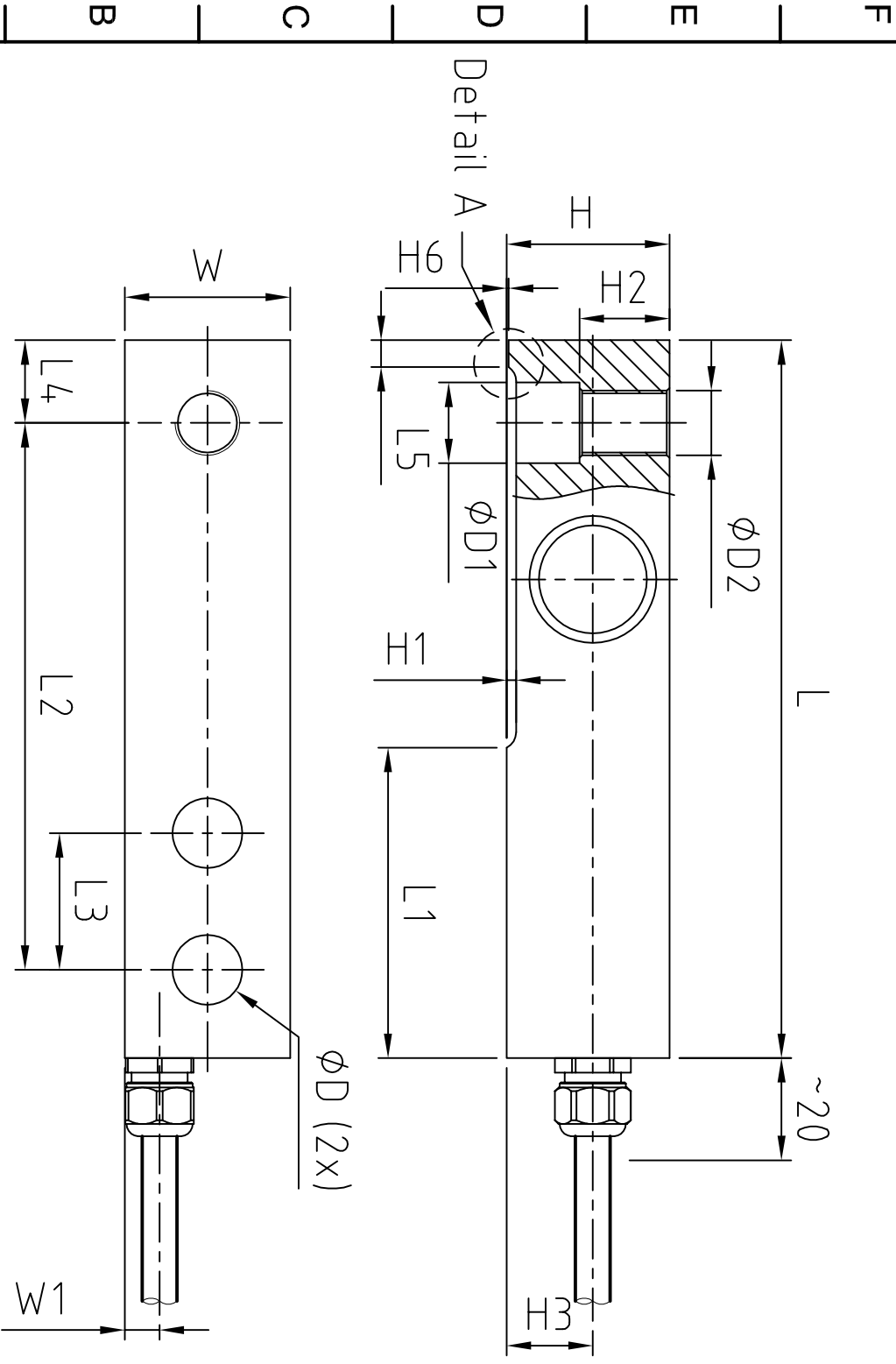


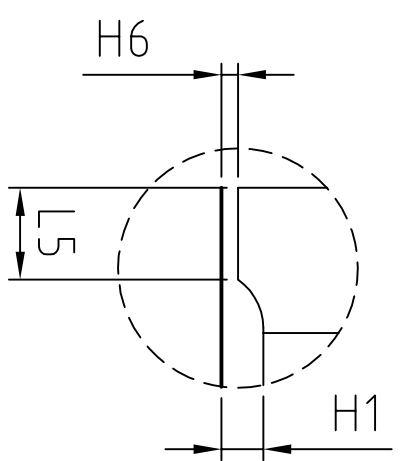
Model	Capacity	Dimensions and locations															
		D(2x)	D1	D2	H	H1	H2	H3	H6	L	L1	L2	L3	L4	L5	W	W1
SLB515	110–1100kg [250–2500lb]	13.0 [0.51]	12.5 [0.49]	M12	30.2 [1.19]	1.8 [0.07]	20 [0.79]	16.0 [0.63]	0.48 [0.02]	133.4 [5.25]	56.5 [2.22]	101.6 [4.00]	25.4 [1.00]	15.4 [0.61]	6.4 [0.25]	30.7 [1.21]	6.5 [0.26]
	2200kg [5000lb]	13.0 [0.51]	12.5 [0.49]	M12	36.6 [1.44]	2.6 [0.10]	20 [0.79]	19.6 [0.77]	2.6 [0.10]	136.7 [5.38]	55.6 [2.19]	101.6 [4.00]	25.4 [1.00]	18.4 [0.72]	–	36.8 [1.45]	6.0 [0.24]
	4400kg [10000lb]	20.5 [0.81]	22.2 [0.87]	M20	42.9 [1.69]	2.5 [0.10]	20 [0.79]	22.7 [0.89]	2.5 [0.10]	171.5 [6.75]	73.8 [2.91]	133.4 [5.25]	38.1 [1.50]	21.4 [0.84]	–	42.9 [1.69]	6.0 [0.24]



Notes

- 1. Dimensions are in mm[inch].
- 2. Cable length 3m, 5m, 10m.
- 3. Overload stop on 110kg–1100kg[250–2500lb] only.

Detail A



CABLE TERMINATION	
+Exc	Green
–Exc	Black
+Sig	White
–Sig	Red
Shield *	Yellow

*Connected to Spring Element

METTLER TOLEDO		General Dimension Layout SLB515	
MTCN /MTCT / MTCZ			
30136761B			
SHEET: 第 1 页 of 共 1 页			
B			
A			

批准/Appro Mark	FS Num.	1:1.5
计量/Metrology	数量/WGT	
安全/Safety	比例/SCALE	
Ex		

13	12	11	10	9	8	7	6	5	4	3	2	1
----	----	----	----	---	---	---	---	---	---	---	---	---