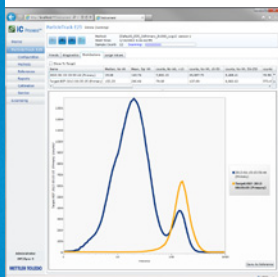


## Inline Particle Measurement Monitor and Control from Lab to Plant



### Track Inline Particle Dimension, Shape, and Count

ParticleTrack G600 measures changes in particle dimension, shape and count. Real-time trends and distributions track changes to particles as they naturally exist in the process eliminating the need for offline sampling.



### Understand, Optimize and Transfer

Understand how the particle system responds to changing operating conditions. Optimize particle distribution to improve process performance and product quality. Scale-up and transfer the process to ensure batch repeatability and process stability.



### Ideal for Larger Vessels

When mounted in a dip pipe or extension tube, ParticleTrack G600R reaches to the ideal insertion depth in large process vessels. Dip pipe adapter kits include detailed installation instructions.



### Flexible Mounting System

The ParticleTrack Flexible Mounting System is designed to enable easy probe installation in a variety of pipelines or vessels without permanent modification of the probe. Options include the use of industry standard ANSI, DIN, JIS, or TriClamp flanges, as well as the ParticleTrack Ball Valve Assembly.



### ParticleTrack™ G600 R, T, P and X versions

ParticleTrack G600 with FBRM® (Focused Beam Reflectance Measurement) technology provides the unique ability to measure particles and droplets inline in concentrated suspensions and emulsions without the need for sample extraction or sample preparation. ParticleTrack is an inline process analytical tool that tracks the rate and degree of change to particles and particle structures as they naturally exist in process. ParticleTrack enables scientists and engineers to relate particle system dynamics to critical product quality parameters and optimize the efficiency of crystallization, filtration and other particulate processes.

# Inline Particle Measurement

## Monitor and Control from Lab to Plant

### Technical Data

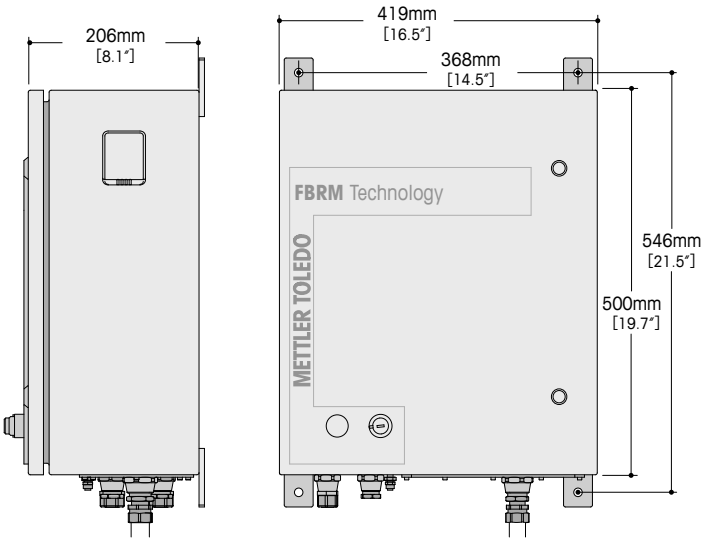
Detection Range	0.5 to 2000µm
Probe Wetted Alloy	SS316L (standard), C22 (optional), Other alloys available as custom
Probe Window	Sapphire with Kalrez® 6375 O-rings (standard), TM (optional)
Conduit Length	15m [49.2ft]
Probe Tip Temp Range	-10 to 120°C (standard)*; -80 to 150°C (custom)
Probe Pressure Rating	10barg* (standard); up to 300barg (custom)
Field Unit Material	316 Stainless Steel
Air Supply Pressure	Min: 4barg [60psig]
Air Supply Flow	Max: 28.3NL/min (1.0SCFM)
Power	100–240VAC (auto-switching), 50/60Hz, 0.5A

\*Temperature and pressure specifications are conservative ratings, but should not be exceeded unless exceptions are specifically provided for a given installation design. Contact METTLER TOLEDO for information about extreme-temperature or high-pressure applications.

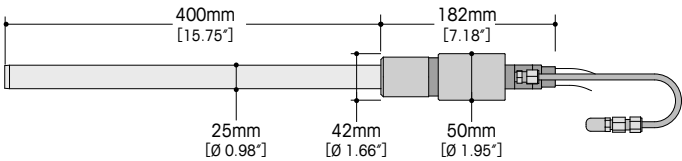
Certification	NRTL Certificate E113433; CE Approved, Class 1 Laser Device, Compliant with 21CFR1040.10 and 1040.11 and IEC60825-1
---------------	---



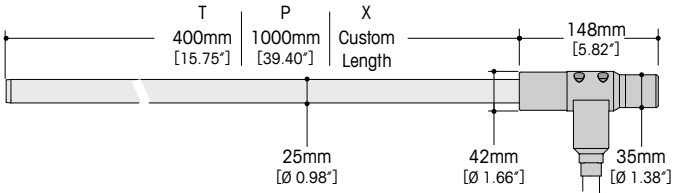
Base Unit Dimensions



G600R Probe Dimensions



G600T/G600P/G600X Probe Dimensions



### Probe Specifications

	Diameter	Length	Standard Pressure Limit	Compression Fitting (3barg limit)	Flexible Mounting Options				Custom Mounting Options		
					Dip Pipe Installation	Ball Valve Assembly	Flange Mounting (ANSI/DIN/JIS)	Threaded Tri-clamp Flange	Custom Probe Pressure Limit	TM Window and Welded Triclamp (100barg limit)	Tapered High-Pressure Flange (300barg limit)
G600R	25mm	400mm	10barg	•	•	•	•	•			
G600T	25mm	400mm	10barg	•		•	•	•			
G600P	25mm	1000mm	10barg	•			•	•			
G600X	25mm	Custom	10barg	•			•	•	300barg	•	•

Mettler-Toledo AutoChem, Inc.  
7075 Samuel Morse Drive  
Columbia, MD 21046  
Phone +1 410 910 8500  
Fax +1 410 910 8600

Subject to technical changes  
© 1/2013 Mettler-Toledo AutoChem, Inc  
Printed in USA

[www.mt.com/ParticleTrackG600](http://www.mt.com/ParticleTrackG600)

For more information